

CORNER RECORD

Agency Index

Document Number

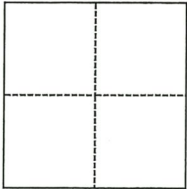
DPW # 17-134
APN 052-130-17

City of Sausalito County of Marin, California

Brief Legal Description Lot 17, Map of Marin City Redevelopment Project Unit One, 10 MAPS 59, M.C.R.

CORNER TYPE

COORDINATES (Optional)



- Government Corner Control
 Meander Property
 Rancho Other

Date of Survey November 30, 2017

N. _____ E. _____

Elevation _____

Units Metric U.S. Survey Foot

Horizontal Datum _____

Zone _____ Epoch Date _____

Vertical Datum _____

Complies with Public Resources Code §§8801-8819

Complies with Public Resources Code §§8890-8902

- PLS Act Ref.: 8765(d) 8771 8773 Other:
 Corner/
 Monument: Left as found Established Rebuilt Pre-Construction
 Found and tagged Reestablished Referenced Post-Construction

Narrative of corner identified and monument as found, set, reset, replaced, or removed:

See sheet #2 for description(s):

Found and tied 5' offset Drake Street centerline monuments as shown and delineated on 10 MAPS 59 and as show and delineated herein page 2 of 2, to establish Basis of Bearings and to reestablish shown and delineated Lot 17 corners. Set 1/2" iron pipes tagged LS4869 at said corners, with one exception as shown herein page 2 of 2.

SURVEYOR'S STATEMENT

This Corner Record was prepared by me or under my direction in conformance with

the Professional Land Surveyors' Act on December 15, 2017

Signed Arthur L. Gambini P.L.S. or R.C.E. No. 4869



COUNTY SURVEYOR'S STATEMENT

This Corner Record was received DECEMBER 19, 2017

and examined and filed JAN 02, 2018

Signed [Signature] P.L.S. or R.C.E. No. 9292

Title DEPUTY C.S.

County Surveyor's Comment

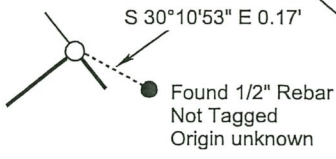
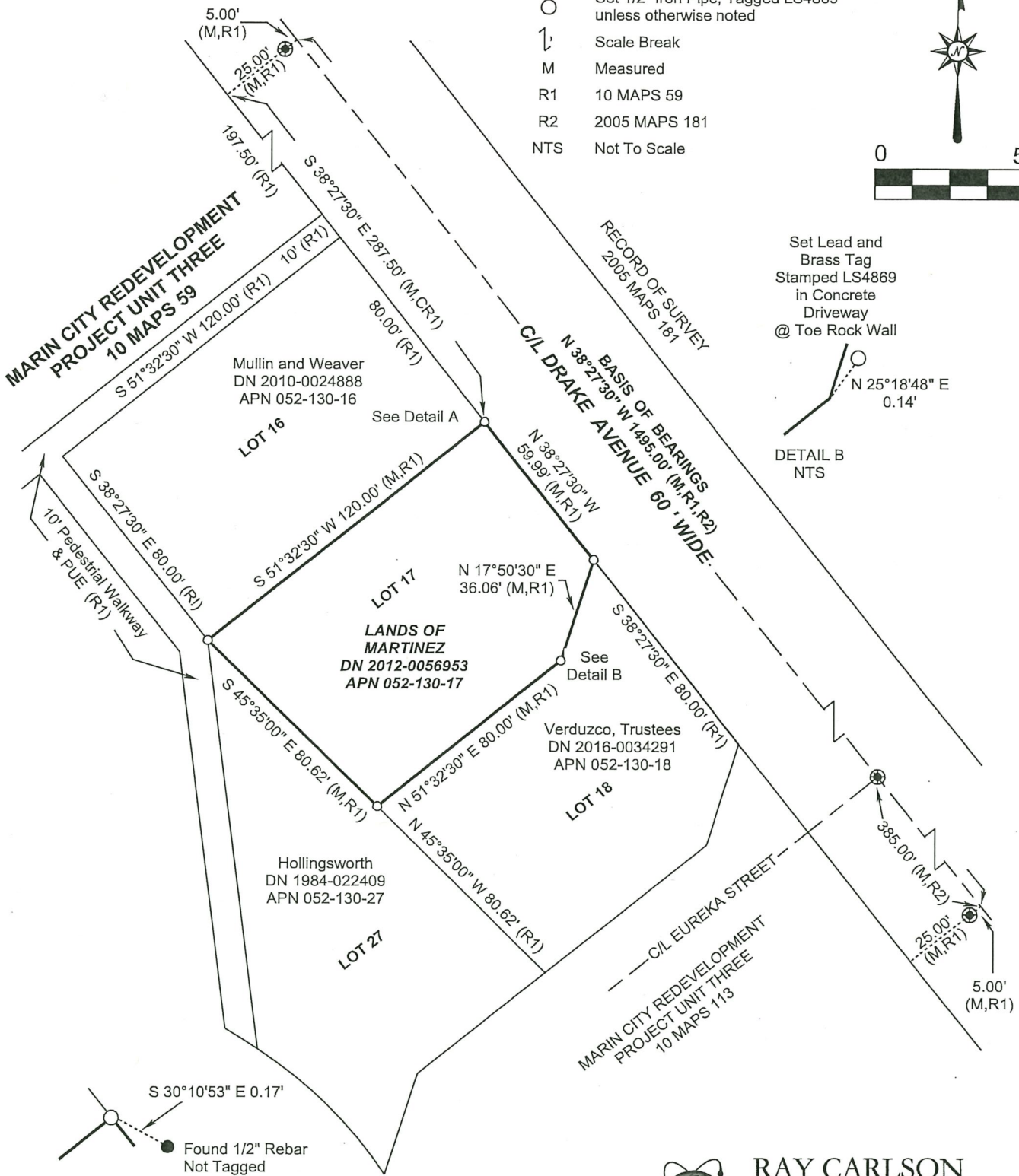
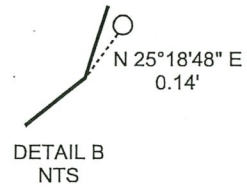


LEGEND

- ⊕ Found Std Street Monument
- Set 1/2" Iron Pipe, Tagged LS4869 unless otherwise noted
- ⌋ Scale Break
- M Measured
- R1 10 MAPS 59
- R2 2005 MAPS 181
- NTS Not To Scale



Set Lead and Brass Tag Stamped LS4869 in Concrete Driveway @ Toe Rock Wall



RAY CARLSON AND ASSOCIATES, INC.
Mapping for a Better World™
SURVEYING • MAPPING • GIS • CONSULTING
411 RUSSELL AVENUE SANTA ROSA, CALIFORNIA 95403
(707) 528-7649 • RCMAPS.COM
© 2014, Ray Carlson and Associates, Inc.

THIS EXHIBIT IS FOR GRAPHIC PURPOSES ONLY. ANY ERRORS OR OMISSIONS ON THIS EXHIBIT SHALL NOT AFFECT THE DEED DESCRIPTION.