

CORNER RECORD

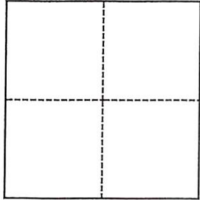
Agency Index 21-010

Document Number 052-130-16

City of Sausalito County of Marin, California

Brief Legal Description SE Line of Lot 16, Map of Marin City Redevelopment Project Unit 1, 10 Maps 59

CORNER TYPE



- Government Corner Control
 Meander Property
 Rancho Other

Date of Survey December 11, 2020

COORDINATES (Optional)

N. _____ E. _____

Elevation _____

Units Metric U.S. Survey Foot

Horizontal Datum _____

Zone _____ Epoch Date _____

Vertical Datum _____

Complies with Public Resources Code §§8801-8819

Complies with Public Resources Code §§8890-8902

PLS Act Ref.: 8765(d) 8771 8773 Other:

Corner/Monument: Left as found Established Rebuilt Pre-Construction

Found and tagged Reestablished Referenced Post-Construction

Narrative of corner identified and monument as found, set, reset, replaced, or removed:

See sheet #2 for description(s):

Found and tied 5' offset Drake Street centerline monuments as shown and delineated on said 10 Maps 59, M.C.R., and as shown and delineated herein page 2 of 2, to establish Basis of Bearings and re-establish said Redevelopment Project southeasterly line of Lot 16, line points and corners.

SURVEYOR'S STATEMENT

This Corner Record was prepared by me or under my direction in conformance with

the Professional Land Surveyors' Act on January 6, 2021

Signed *Ray C. Carlson* P.L.S. or R.C.E. No. 3890



COUNTY SURVEYOR'S STATEMENT

This Corner Record was received 1-12-2021

and examined and filed 5-12-2021

Signed *John R. Semerad* P.L.S. or R.C.E. No. 9292

Title Deputy

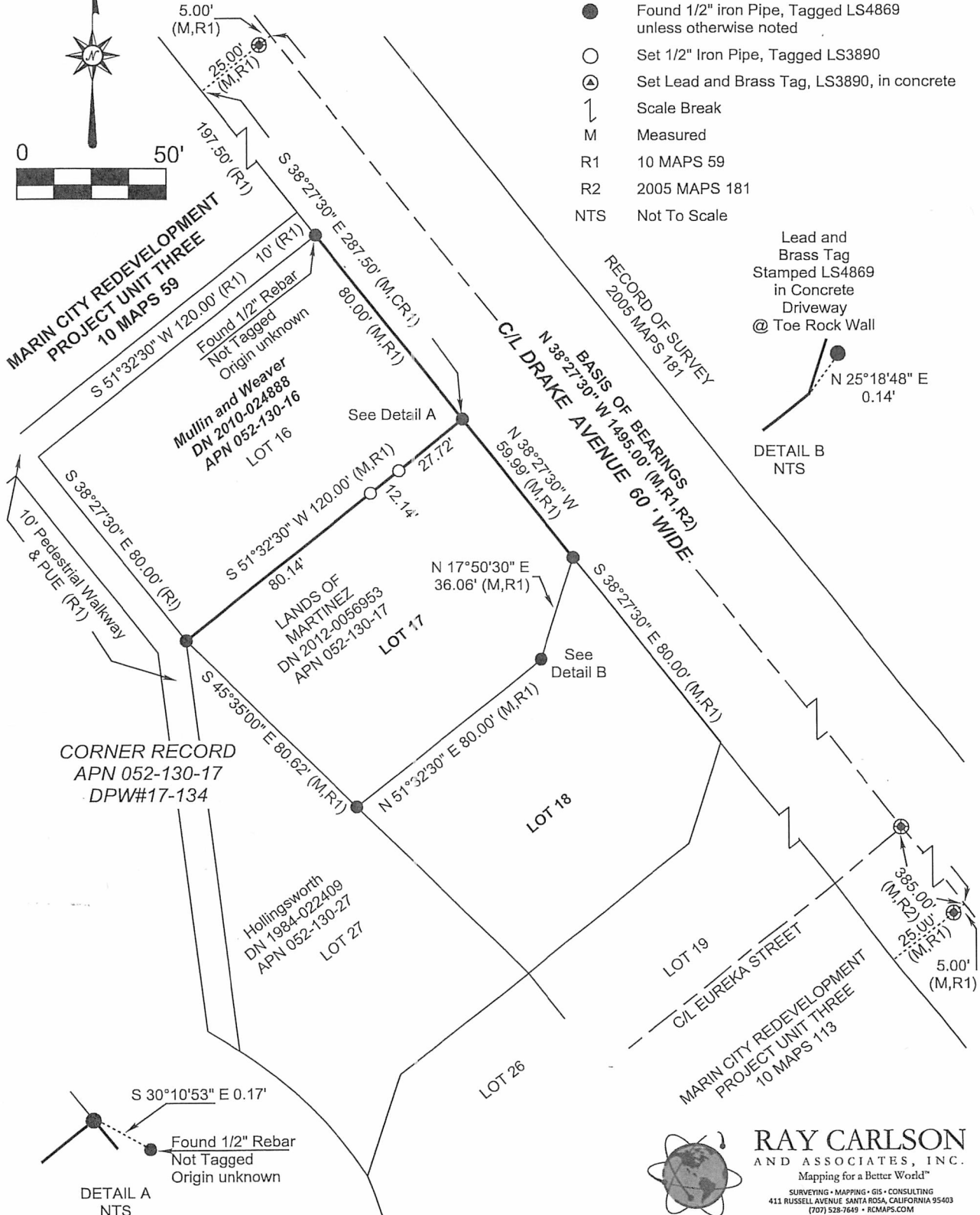
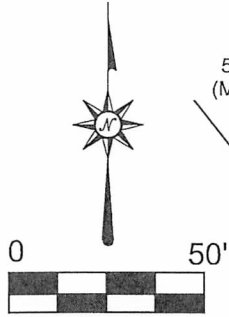
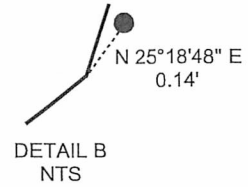
County Surveyor's Comment



LEGEND

- ⊕ Found Std Street Monument
- Found 1/2" iron Pipe, Tagged LS4869 unless otherwise noted
- Set 1/2" Iron Pipe, Tagged LS3890
- ⊕ Set Lead and Brass Tag, LS3890, in concrete
- ↯ Scale Break
- M Measured
- R1 10 MAPS 59
- R2 2005 MAPS 181
- NTS Not To Scale

Lead and Brass Tag
Stamped LS4869
in Concrete
Driveway
@ Toe Rock Wall



DETAIL A
NTS



RAY CARLSON AND ASSOCIATES, INC.
Mapping for a Better World™
SURVEYING • MAPPING • GIS • CONSULTING
411 RUSSELL AVENUE SANTA ROSA, CALIFORNIA 95403
(707) 528-7649 • RCMAPS.COM
© 2014, Ray Carlson and Associates, Inc.