

CORNER RECORD

Marin City
County of Marin, California

Document Number APN 052-130-13

Brief Legal Description: Lot 13, "Map of Marin City Redevelopment Project, Unit One" Recorded in Book 10 Maps Page 59, Marin County Records.

CORNER TYPE

Government Corner Control
Meander Property
Rancho Other
Date of Survey : February, 2012

COORDINATES

(Optional)

N. _____
E. _____
Zone _____ Datum _____
Elev. _____

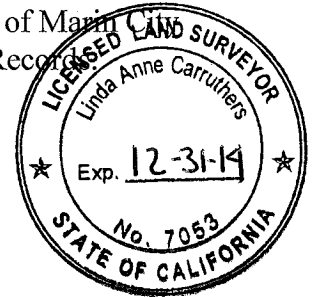
Corner --Left as found Found and tagged Established Reestablished Rebuilt

Identification and type of corner found: Evidence used to identify or procedure used to establish or reestablish the corner.

This survey is based upon found monuments shown on that certain Map entitled: "Map of Marin City Redevelopment Project, Unit One" Recorded in Book 10 Maps Page 59, Marin County Records.

A Description of the physical condition of the monument as found and as set or reset.

See Sheet two.



SURVEYOR'S STATEMENT

This Corner Record was prepared by me or under my direction in conformance with the Professional Land Surveyor's Act on March 13, 2013

Signed Linda A. Carruthers P.L.S. 7053

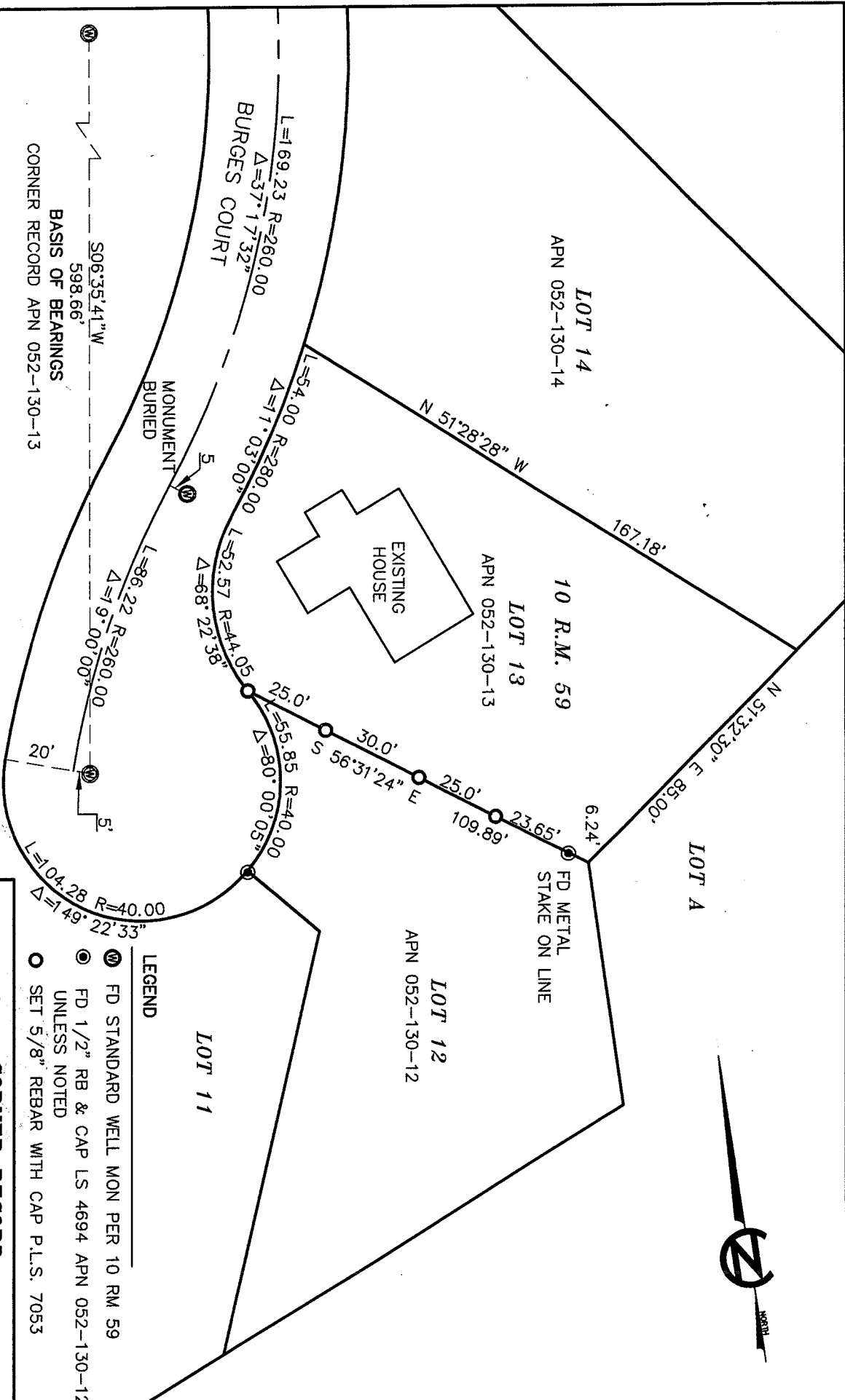
COUNTY SURVEYOR'S STATEMENT

This Corner Record was received MARCH 19, 2013 and examined and filed JUNE 3, 2013.

Signed Richard G. Simonitch Title DEPUTY CO. SURVEYOR



County Surveyor's Comments _____



BASIS OF BEARINGS
 506°35'41" W
 598.66'
 CORNER RECORD APN 052-130-13

- LEGEND**
- ⊕ FD STANDARD WELL MON PER 10 RM 59
 - ⊙ FD 1/2" RB & CAP LS 4694 APN 052-130-12 UNLESS NOTED
 - SET 5/8" REBAR WITH CAP P.L.S. 7053

BASIS OF BEARINGS

THE BASIS OF BEARINGS FOR THIS SURVEY
 IS SOUTH 06°35'41" WEST BETWEEN
 FOUND MONUMENTS ON BURGESS COURT
 ACCORDING TO 10 RM 59.

CORNER RECORD
LOT 13, 10 RM 59
MARIN CITY, CALIFORNIA

LINDA A. CARRUTHERS & ASSOCIATES
2015 BRIDGEWAY, STE. 301D
SAUSALITO, CA 94965

SCALE: 1" = 40'
 DATE: FEB. 2013
 JOB NO. 13-810CR SHEET 2 OF 2