

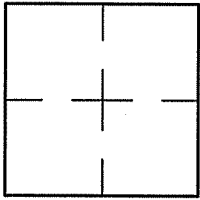
CORNER RECORD

Document Number A.P.N. 052-130-12

City of MARIN CITY

County of MARIN, California

Brief Legal Description LOT 12 PER 10 R.M. 59



**CORNER TYPE**

Government Corner  Control

Meander  Property

Rancho  Other

Date of Survey 09/30/08

**COORDINATES (Optional)**

N. \_\_\_\_\_  
E. \_\_\_\_\_

Zone \_\_\_\_\_ NAD27  NAD83   
NAD83 Epoch \_\_\_\_\_

Elev. \_\_\_\_\_  
Vert. Datum: NGVD29  NAVD88   
Meas. Units: Metric  Imperial

Corner- Left as found  Found and tagged  Established  Reestablished  Rebuilt

Identification and type of corner found: Evidence used to identify or procedure used to establish or reestablish the corner:  
REESTABLISHED WESTERLY LINE OF LOT 12, 10 R.M. 59, BASED UPON FOUND STREET MONUMENTS IN  
BURGESS COURT.

A description of the physical condition of the monument as found and as set or reset: SEE SHEET 2.

**SURVEYOR'S STATEMENT**

This Corner Record was prepared by me or under my direction in conformance with  
the Land Surveyor's Act on SEPTEMBER 30 2008

Signed Lawrence P Doyle P.L.S. or R.C.E. No. P.L.S. 4694



**COUNTY SURVEYOR'S STATEMENT**

This Corner Record was received NOVEMBER 3, 2008

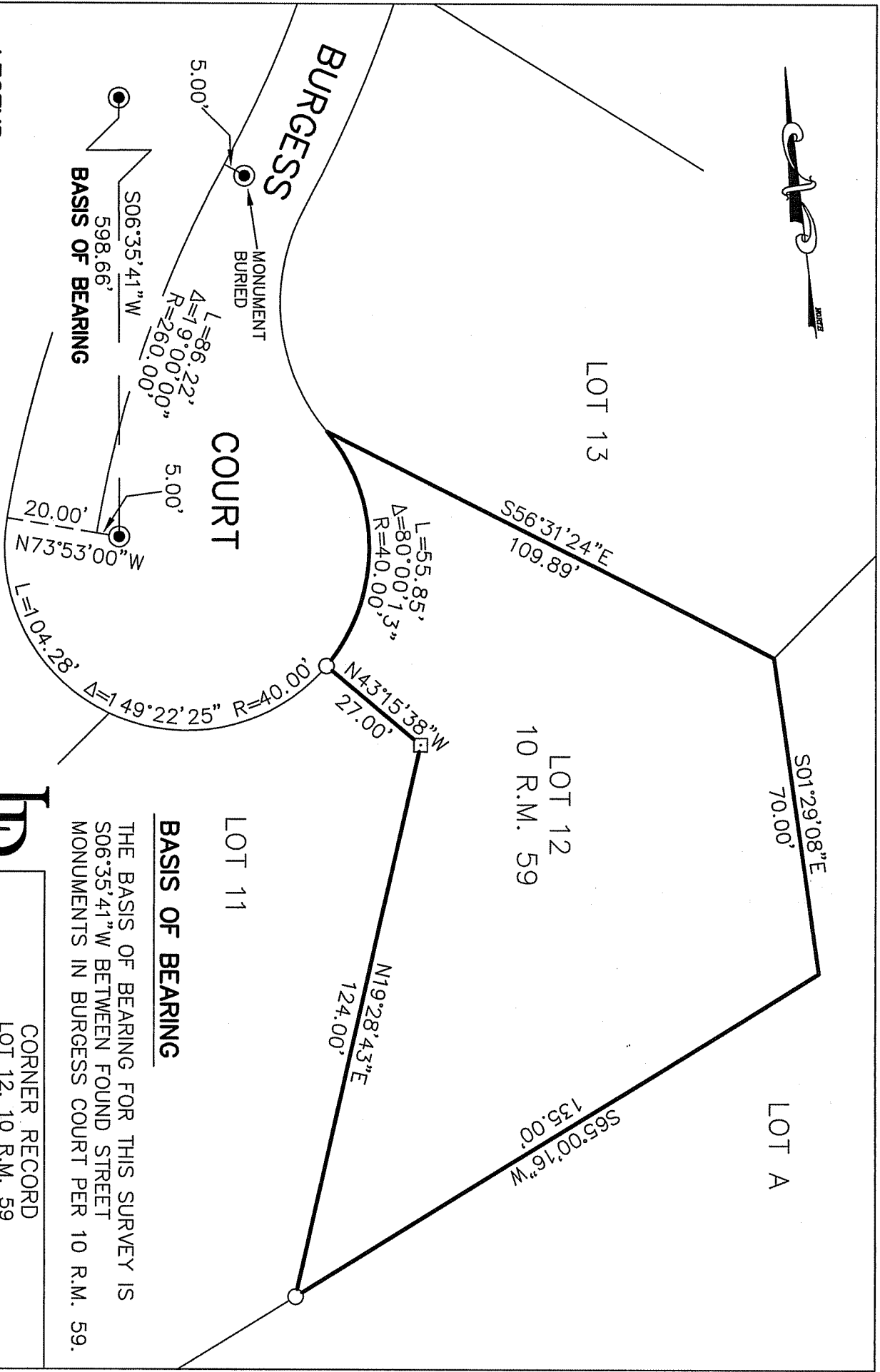
and examined and filed DECEMBER 15, 2008

Signed [Signature] P.L.S. or R.C.E. No. 7128

Title COUNTY SURVEYOR



County Surveyor's Comment \_\_\_\_\_



- LEGEND**
- FOUND STREET MONUMENT
  - SET HUB & TAG, L.S. 4694
  - SET 3/4" PIPE & PLUG, L.S. 4694

**BASIS OF BEARING**

THE BASIS OF BEARING FOR THIS SURVEY IS  
S06°35'41"W BETWEEN FOUND STREET  
MONUMENTS IN BURGESS COURT PER 10 R.M. 59.

**LPD**

CORNER RECORD  
LOT 12, 10 R.M. 59  
MARIN CITY MARIN COUNTY CALIFORNIA

**LAWRENCE P. DOYLE**  
LAND SURVEYOR/CIVIL ENGINEER  
100 HELENS LANE MILL VALLEY CA 94941 (415-388-9585)

SCALE: 1" = 30'  
DATE: 09/30/08

DRAWN BY:  
SHEET 2 OF 2

DRAWING NO.  
1846-08