

CORNER RECORD

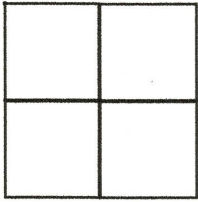
Agency Index CR23-085

Document Number 052-111-08

City of Unincorporated

County of MARIN, California

Brief Legal Description Lot 88, 11 RM 46 "Marin City Redevelopment Project Unit Four", I.N. 2022-0006838



CORNER TYPE

Government Corner Control
Meander Property
Rancho Other

Date of Survey 09-20-2023

COORDINATES (Optional)

N. _____ E. _____

Elevation _____

Units Metric U.S. Survey Foot

Horizontal Datum _____

Zone _____ Epoch Date _____

Vertical Datum _____

Complies with Public Resources Code §§8801-8819

Complies with Public Resources Code §§8890-8902

PLS Act Ref: 8765(d) 8771 8773 Other:

Corner/Monument: Left as found Established Rebuilt Pre-Construction
 Found and tagged Reestablished Referenced Post-Construction

Narrative of corner identified and monument as found, set, reset, replaced, or removed:

See sheet #2 for description (s):

SURVEYOR'S STATEMENT

This Corner Record was prepared by me or under my direction in conformance with the Professional Land Surveyors' Act on October 4, 2023

Signed [Signature] P.L.S. or R.C.E. No. 6649



COUNTY SURVEYOR'S STATEMENT

This Corner Record was received October 04, 2023

and examined and filed October 06, 2023

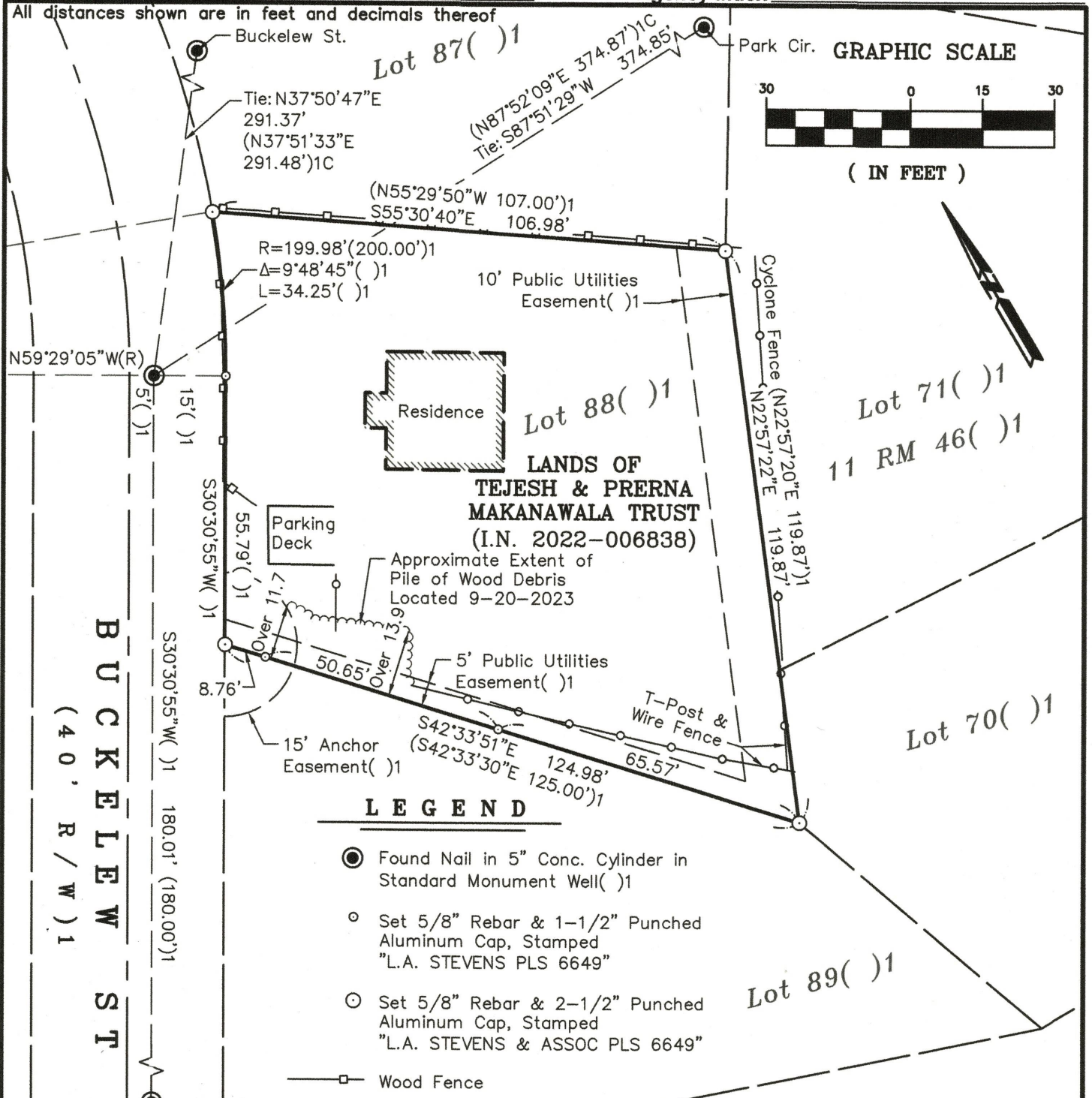
Signed T.W. Park P.L.S. [Redacted] No. 8176

Title County Surveyor

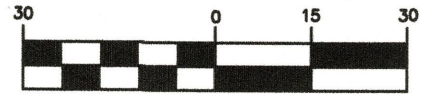


County Surveyor's Comment _____

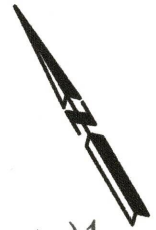
All distances shown are in feet and decimals thereof



GRAPHIC SCALE



(IN FEET)



LANDS OF
**TEJESH & PRERNA
 MAKANAWALA TRUST**
 (I.N. 2022-006838)

LEGEND

- Found Nail in 5" Conc. Cylinder in Standard Monument Well()1
- Set 5/8" Rebar & 1-1/2" Punched Aluminum Cap, Stamped "L.A. STEVENS PLS 6649"
- ⊙ Set 5/8" Rebar & 2-1/2" Punched Aluminum Cap, Stamped "L.A. STEVENS & ASSOC PLS 6649"

- Wood Fence
- Wire Fence
- ()1C Calculated Per 11 RM 46
- Not to Scale
- (R) Radial Bearing

CORNER RECORD

LANDS OF
**TEJESH & PRERNA
 MAKANAWALA TRUST**

(LOT 88, 11 RM 46)
 SAUSALITO

MARIN COUNTY
 SCALE: 1" = 30'

CALIFORNIA
 SEPTEMBER, 2023

L.A. Stevens & Associates, Inc.

Professional Land Surveyors * (415) 382-7713
 7 Commercial Blvd., Suite 1 * Novato, CA 94949

Job # 232328



10-4-2023

Lawrence A. Stevens, PLS 6649

Copyright © Lawrence A. Stevens 2023