

CORNER RECORD

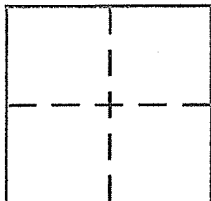
A.P. # 52-082-17

Document Number J.N. 2001-0045958

~~NOTED~~ Vicinity Marin City / Sausalito

County of MARIN, California

Brief Legal Description Lot 85, Book 11 of Maps, at Page 46, Marin County Records.



CORNER TYPE

Government Corner Control
 Meander Property
 Rancho Other
 Date of Survey 11 September 2006

COORDINATES (Optional)

N. _____
 E. _____
 Zone _____ NAD27 NAD83
 NAD83 Epoch _____
 Elev. _____
 Vert. Datum: NGVD29 NAVD88
 Meas. Units: Metric Imperial

Corner - Left as found Found and tagged Established Reestablished Rebuilt

Identification and type of corner found: Evidence used to identify or procedure used to establish or reestablish the corner: Original standard street monument hand-hole access covers, with pin in 6" diameter concrete cylinder, (0.4' below rim). (See reverse side)

A description of the physical condition of the monument as found and as set or reset: **(A)** = Set 3/4" I.D. galvanized iron pipe with plastic plug "DANSKIN PLS 4794"; **(B)** = Set bronze nail & tag "Danskin LS 4794" in concrete-filled drill hole at top of curb 5.50' along the NW'ly projection of the northwesterly boundary of Lot 85; **(C)** = found 3/4" iron pipe with plastic plug "LS 6865". **(D)** = Found old wooden hub with tee-iron guard northwesterly. (See reverse side)

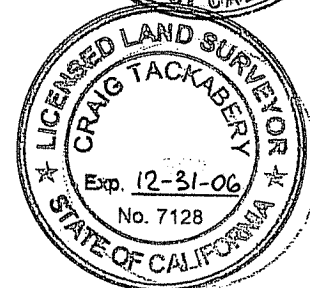
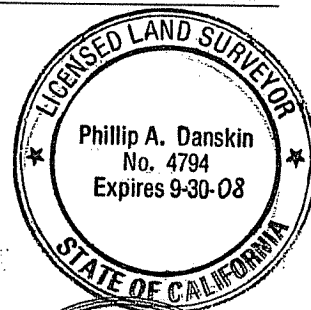
SURVEYOR'S STATEMENT

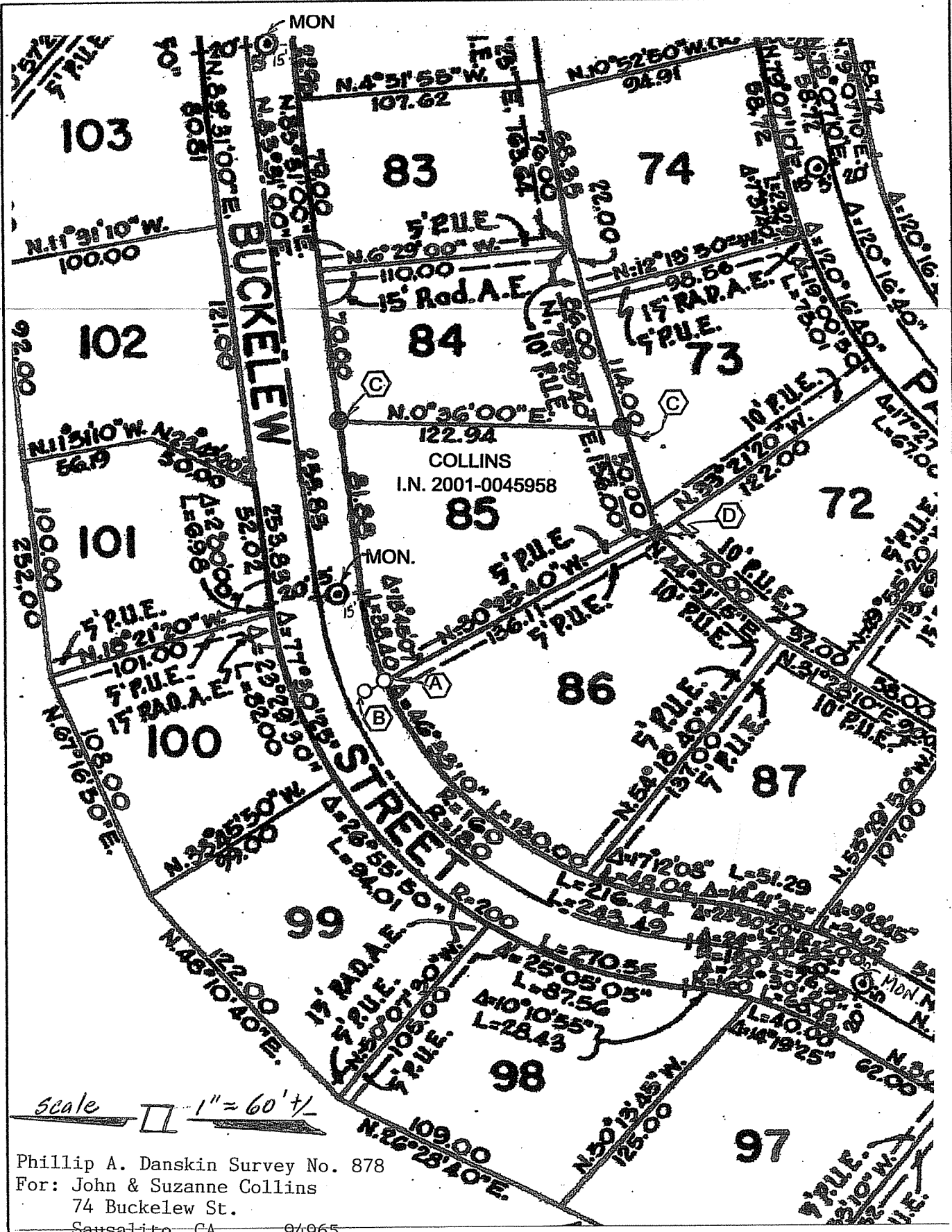
This Corner Record was prepared by me or under my direction in conformance with the Land Surveyor's Act on 12 September 2006
 Signed [Signature] P.L.S or R.C.E. No. LS 4794

COUNTY SURVEYOR'S STATEMENT

This Corner Record was received SEPTEMBER 15, 2006
 and examined and filed OCTOBER 26, 2006
 Signed [Signature] P.L.S or R.C.E. No. 7128
 Title COUNTY SURVEYOR

County Surveyor's Comment _____





Phillip A. Danskin Survey No. 878
 For: John & Suzanne Collins
 74 Buckelew St.
 Sausalito, CA 94965