

CORNER RECORD

Document Number 052-022-04

City of Mill Valley County of Marin, California

Brief Legal Description Lot 508, "Kay Park", Unit Four,
Book 7 of Record Maps, at Page 55, MCR



CORNER TYPE

Government Corner Control
Meaneder Property
Rancho Other
Date of Survey 06/09/2014

COORDINATES (Optional)

N. _____
E. _____
Zone NAD27 NAD83
NAD83 Epoch _____
Elev. _____
Vert. Datum: NGVD29 NAVD88
Meas. Units: Metric Imperial

Corner - Left as found Found and tagged Established Reestablished Rebuilt

Identification and type of corner found: Evidence used to identify or procedure used to establish or reestablish the corner:
Center Line Monuments, found to be in record position, along
Flamingo Road and Robin Road, as shown on Record Map titled
"Kay Park", Unit Four, in Book 7 of Maps, at Page 55,
Marin County Records.

A description of the physical condition of the monument as found and as set or reset: _____
Set 1/2" Iron Pipes, LS 7237, at the corners of Lot 508 (set 2ft
witness at N/E corner), as shown on exhibit drawing (opposite page).

SURVEYOR'S STATEMENT

This Corner Record was prepared by me or under my direction in conformance with
the Land Surveyor's Act on 6-16-14

Signed Michael E. Ford P.L.S. or R.C.E. No. 7237



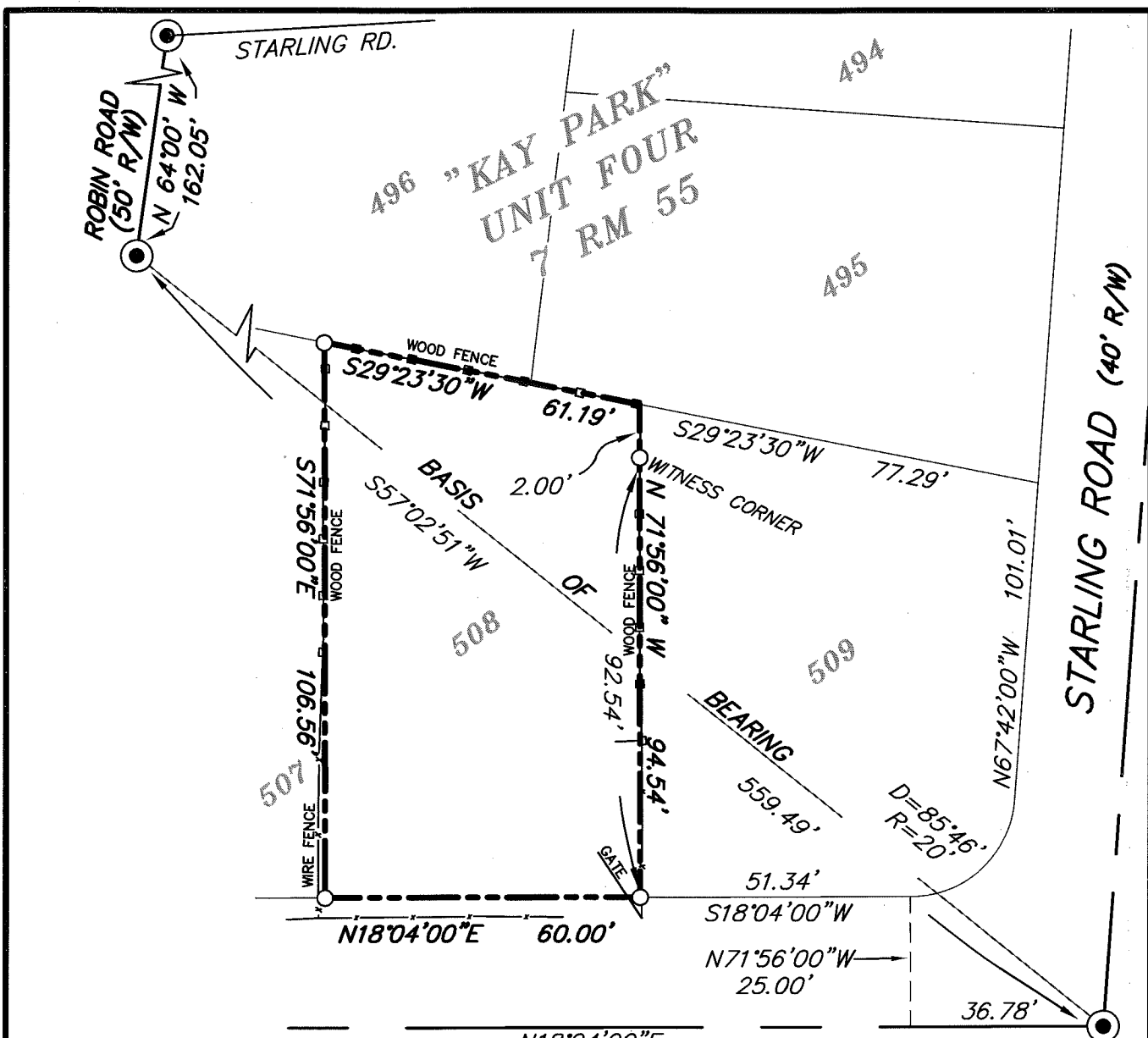
COUNTY SURVEYOR'S STATEMENT

This Corner Record was received 7-28-2014
and examined and filed SEPTEMBER 2, 2014

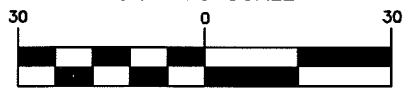
Signed Richard G. Simonitch P.L.S. or R.C.E. No. 7821
Title Deputy



County Surveyor's Comment



GRAPHIC SCALE



(IN FEET)
1 inch = 30 ft.

LEGEND

- STANDARD STREET MONUMENTS
- SET 1/2" IRON PIPE, LS 7237

NOTE:

ALL COURSES SHOWN HEREON ARE RECORD & MEASURED PER "KAY PARK" UNIT FOUR, RM 7 PAGE 55, M.C.R.

BASIS OF BEARINGS

S57°02'57"W CALCULATED BETWEEN FOUND STANDARD STREET MONUMENTS AS SHOWN ON RECORD MAP OF "KAY PARK" UNIT FOUR, RM 7 PAGE 55, M.C.R.



2300 bethards drive, suite J
santa rosa, california 95405
p 707.542.8513 - f 707.542.1825
www.michaelfordinc.com