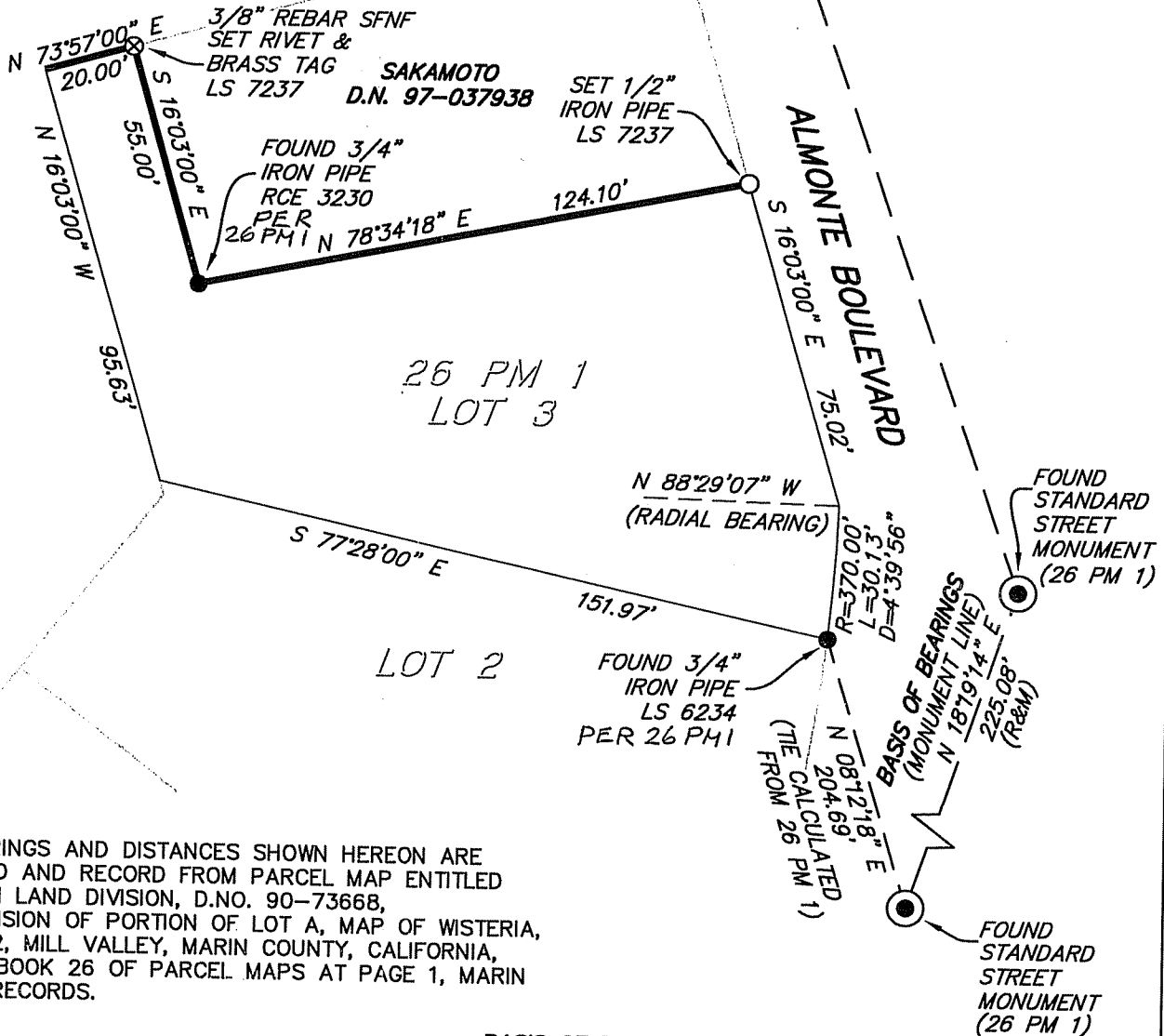


**LEGEND**

SFNF SEARCHED FOR, NOT FOUND  
(R&M) RECORD & MEASURED



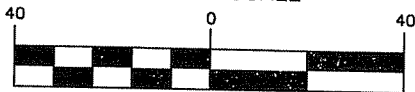
ALL BEARINGS AND DISTANCES SHOWN HEREON ARE MEASURED AND RECORD FROM PARCEL MAP ENTITLED MORRISON LAND DIVISION, D.NO. 90-73668, RESUBDIVISION OF PORTION OF LOT A, MAP OF WISTERIA, 3 R.M. 22, MILL VALLEY, MARIN COUNTY, CALIFORNIA, FILED IN BOOK 26 OF PARCEL MAPS AT PAGE 1, MARIN COUNTY RECORDS.

**BASIS OF BEARINGS**

N 18°19'14" E BETWEEN FOUND STANDARD STREET MONUMENTS IN ALMONTE BOULEVARD AS SHOWN ON PARCEL MAP ENTITLED MORRISON LAND DIVISION, D.NO. 90-73668, RESUBDIVISION OF PORTION OF LOT A, MAP OF WISTERIA, 3 R.M. 22, MILL VALLEY, MARIN COUNTY, CALIFORNIA, FILED IN BOOK 26 OF PARCEL MAPS AT PAGE 1, MARIN COUNTY RECORDS.



GRAPHIC SCALE



( IN FEET )

1 inch = 40 ft.



8910 sonoma hwy suite 12b

po box 1243, kenwood, ca 95452

p 707.833.6468 - f 707.833.5744

www.michaelfordinc.com