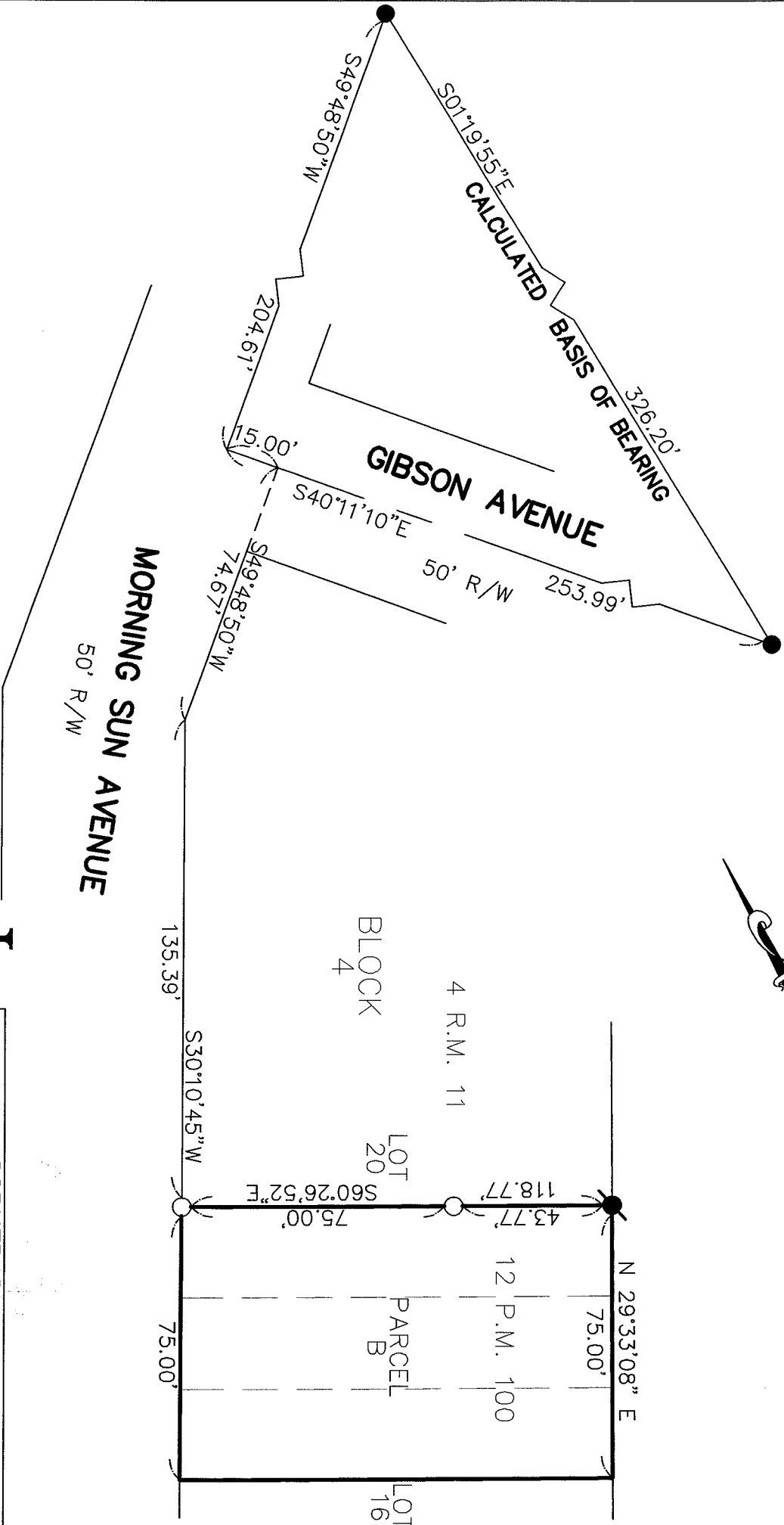
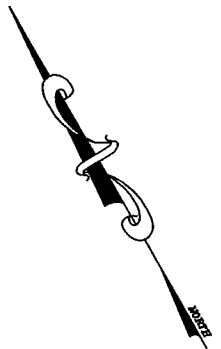
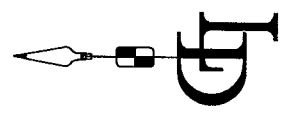


- LEGEND**
- SET 3/4" PIPE AND PLUG L.S. 4694
 - FD. RAILROAD SPIKE PER 12 P.M. 100
 - FD. 1/2" REBAR & CAP R.C.E. 11181 PER 12 R.H. 100



BASIS OF BEARING
 THE BASIS OF BEARING IS S01°19'55"E CALCULATED
 BETWEEN FOUND RAILROAD SPIKES PER 12 P.M. 100.



CORNER RECORD	
PARCEL B 12 P.M. 100	
MILL VALLEY	MARIN COUNTY CALIFORNIA
SCALE: 1" = 40'	DRAWN BY: A/B
DATE: 10/30/02	SHEET 2 OF 2
LAWRENCE P. DOYLE	
LAND SURVEYOR/CIVIL ENGINEER	
P.O. BOX 1609 MILL VALLEY CA 94942 (415-388-9585)	
DRAWING NO.	1098-02