

40'

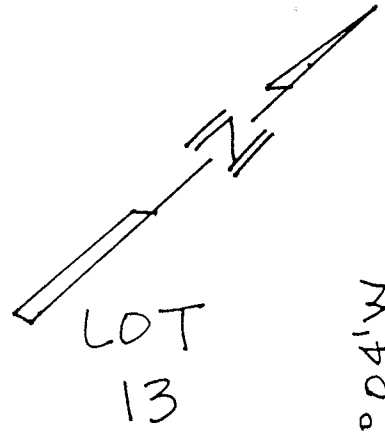
N 42°56'E

FOUND 3/4" IRON PIPE L.S. 2897 HELD

SET 1/2" REBAR, L.S. 5065

FOUND 3/4" IRON PIPE RCE 18200, S 10°54'E, 0.27' OF CALC. CORNER (PER 31 O.S. 57)

SCALE: 1" = 10'



LOT 12  
BLOCK 21  
(4 R.M. 11)

31 O.S. 57

SET 1/2" REBAR, L.S. 5065

N 47°04'W 90'

N 47°04'W 90' 62.00'

LOT 11

HELD

FOUND 1/2" REBAR L.S. 2897 IN ASP.

FOUND BROKEN CONC. NAIL - REPLACED WITH NAIL & TAG, L.S. 5065 HELD

40'

N 42°56'E

GREENE STREET

SET MAG NAIL & SHINER

(30' WIDE)

15.28'