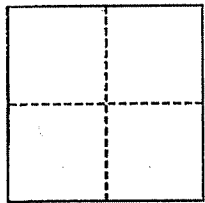


CORNER RECORD

City of Mill Valley

Document Number 051-211-18&19
County of Marin, California

Brief Legal Description Lots 36, 37 & 38, Block 20, 4 RM 11



CORNER TYPE

Government Corner Control
Meander Property
Rancho Other
Date of Survey February 28, 2009

COORDINATES (Optional)

N. _____
E. _____
Zone NAD27 NAD83
NAD83 Epoch _____
Elev. _____
Vert. Datum: NGVD29 NAVD88
Meas. Units: Metric Imperial

Corner- Left as found Found and tagged Established Reestablished Rebuilt

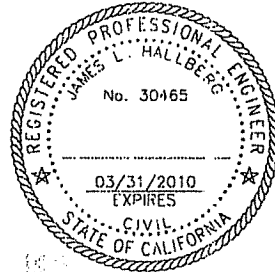
Identification and type of corner found: Evidence used to identify or procedure used to establish or reestablish the corner:
Found Iron Pipe & Tag, RCE 30465, at property corners of the North-Westerly line of Lot 38, per 2007 RS 75.

A description of the physical condition of the monument as found and as set or reset: Set Nail & tag, RCE 30465 along the Common line of Lots 36 & 37, Block 20, 4 RM 11, as shown.

SURVEYOR'S STATEMENT

This corner Record was prepared by me or under my direction in conformance with the Land Surveyor's Act on March 2, 2009

Signed [Signature] P.L.S. or R.C.E. No. 30465



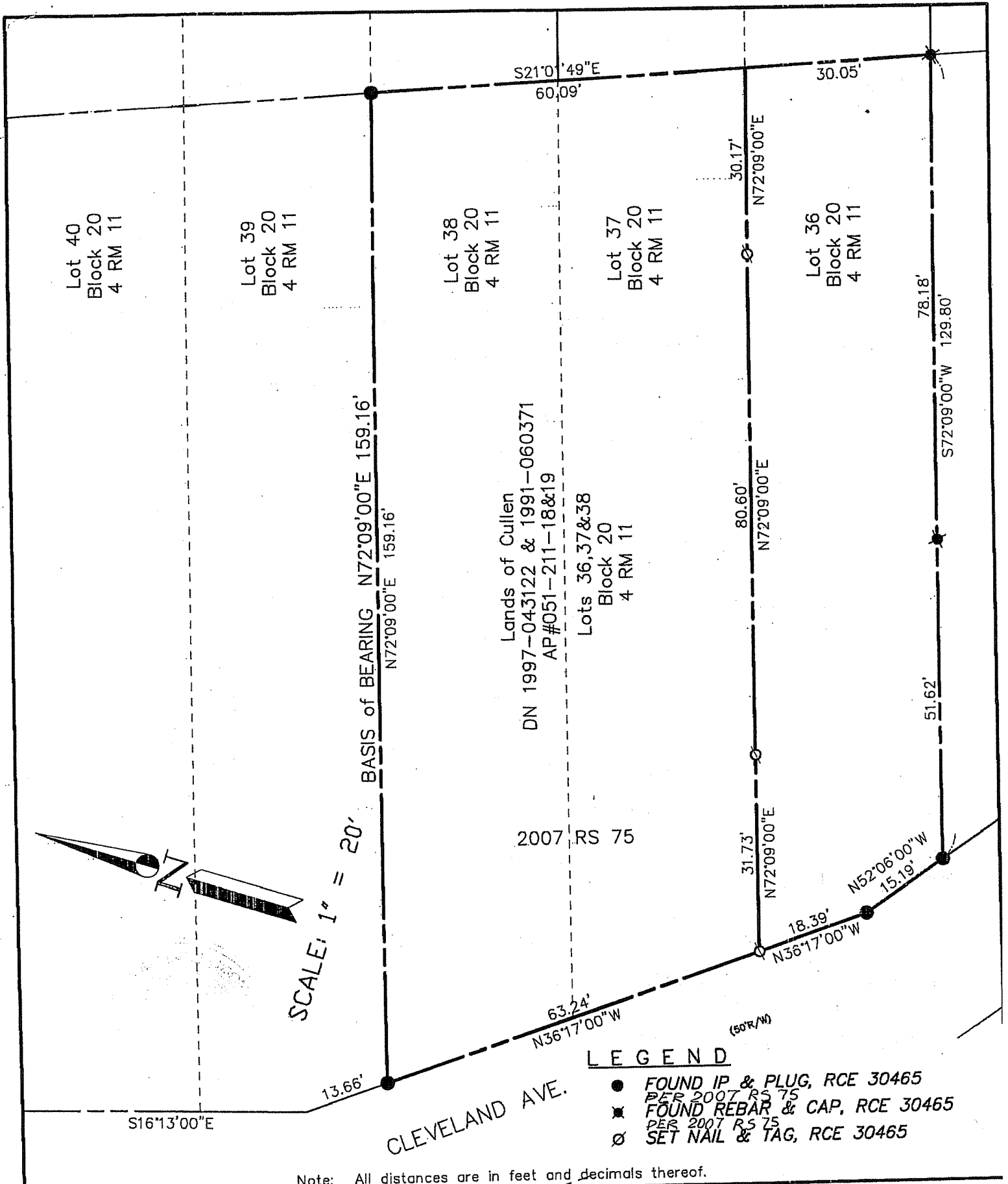
COUNTY SURVEYOR'S STATEMENT

This Corner Record was received MARCH 9, 2009
and examined and filed APRIL 2, 2009

Signed [Signature] P.L.S. or R.C.E. No. 7128
Title COUNTY SURVEYOR



County Surveyor's Comment _____



SHEET	1	OF	1
SCALE:	1" = 20'	DESIGN:	PR
DATE:	Mar. 2009	DRAWN:	PR
FILE:	2009-014	CHECKED:	J.L.H
2009-014\DWG\09-014-BASE.COR-REC			

J.L. ENGINEERING
 CIVIL ENGINEERS-LAND SURVEYORS
 1539 4th ST., SAN RAFAEL, CA. 94901 (415) 457-6647

Corner Record
 Lands of Cullen - 239 Cleveland Ave.
 APN 051-211-18&19, Mill Valley, Marin County, CA