

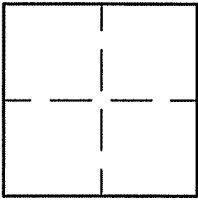
CORNER RECORD

Document Number A.P.# 051-202-21

City of MILL VALLEY

County of MARIN, California

Brief Legal Description LOTS 33 & 34 BLOCK 30, 4 R.M. 11



CORNER TYPE

Government Corner Control

Meander Property

Rancho Other

Date of Survey 10/27/08

COORDINATES (Optional)

N. _____
E. _____

Zone _____ NAD27 NAD83
NAD83 Epoch _____

Elev. _____
Vert. Datum: NGVD29 NAVD88
Meas. Units: Metric Imperial

Corner- Left as found Found and tagged Established Reestablished Rebuilt

Identification and type of corner found: Evidence used to identify or procedure used to establish or reestablish the corner:

1. FOUND BOUNDARY CORNERS SHOWN ON 7 O.S. 12
2. REESTABLISHED BOUNDARY CORNER & ANGLE POINT SHOWN ON 7 O.S. 12, BASED ON FOUND MONUMENTS SHOWN ON 7 O.S. 12

A description of the physical condition of the monument as found and as set or reset: SEE SHEET 2.

SURVEYOR'S STATEMENT

This Corner Record was prepared by me or under my direction in conformance with

the Land Surveyor's Act on OCTOBER 28 2008

Signed Lawrence P Doyle P.L.S. or R.C.E. No. P.L.S. 4694



COUNTY SURVEYOR'S STATEMENT

This Corner Record was received NOVEMBER 3, 2008

and examined and filed DECEMBER 1, 2008

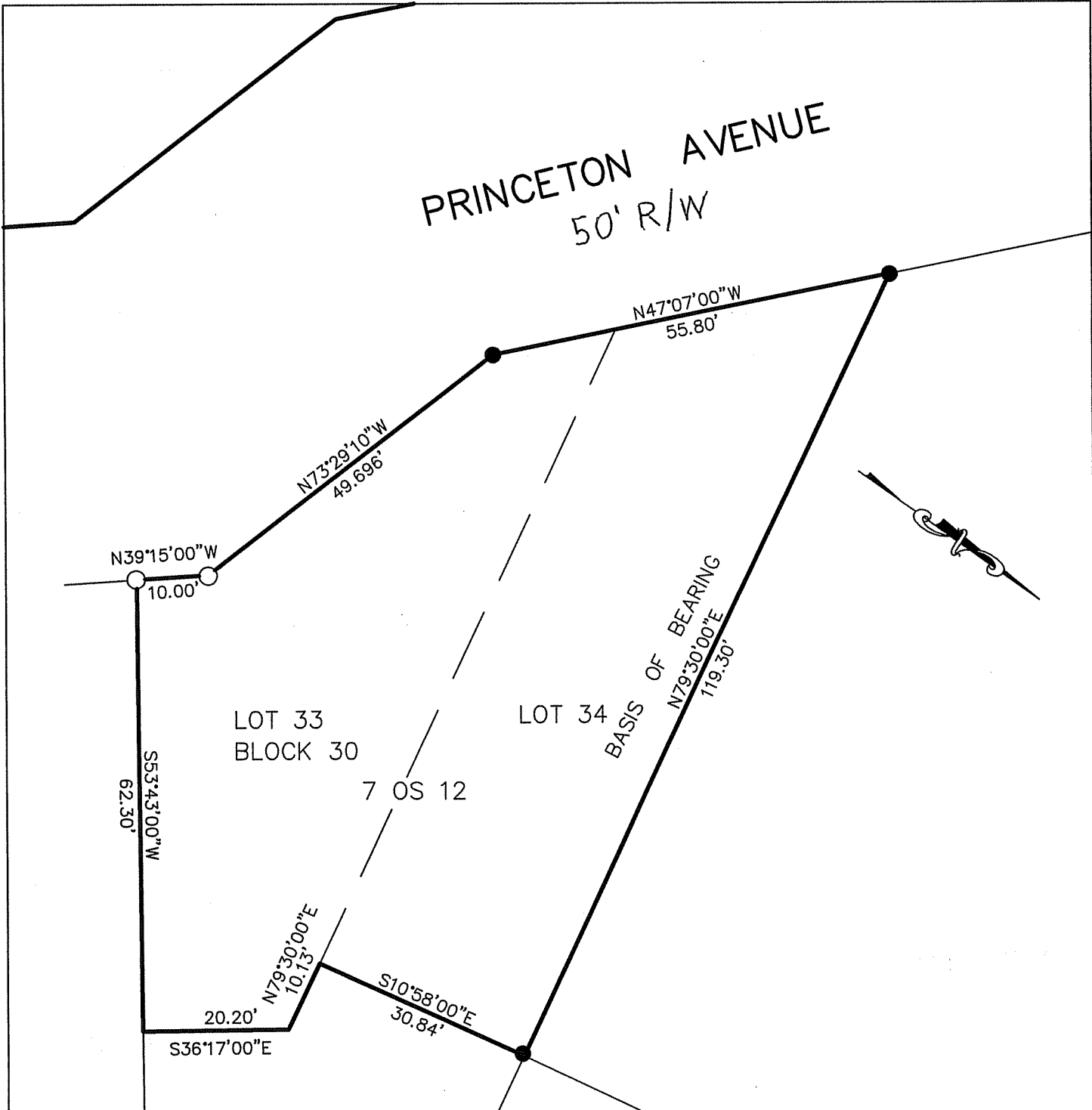
Signed [Signature] P.L.S. or R.C.E. No. 7128

Title COUNTY SURVEYOR



County Surveyor's Comment _____

PRINCETON AVENUE 50' R/W



LOT 33
BLOCK 30

LOT 34

7 OS 12

BASIS OF BEARING

BASIS OF BEARING
THE BASIS OF BEARING FOR THIS SURVEY IS
BETWEEN THE FOUND REBARS AS SHOWN ON
7 O.S. 12

LEGEND

- FOUND 5/8" DIAMETER REBAR
- SET 3/4" PIPE & PLUG STAMPED PLS 4694



CORNER RECORD		
LOTS 33 & 34 BLK 30, 4 R.M.11 & 7 OS 12		
MARIN COUNTY		CALIFORNIA
SCALE: 1"=20'	DATE: 10-28-08	DRAWN BY: LAWRENCE P. DOYLE
LAND SURVEYOR/CIVIL ENGINEER		SHEET 1 OF 1
100 HELENS LANE MILL VALLEY CA 94941 (415-388-9585)		
		DRAWING NO. 1682