

CORNER RECORD

Document Number APN 051-121-67
County of Marin, California

Brief Legal Description: Lot 15 and a portion of Lot 13 & 14, Block 213 "Map of Marin Terraces" 4 RM 44, Marin County Records.

CORNER TYPE

Government Corner
Meander
Rancho
Date of Survey : Sept. 2012

Control
Property
Other

COORDINATES

(Optional)

N. _____
E. _____
Zone _____ Datum _____
Elev. _____

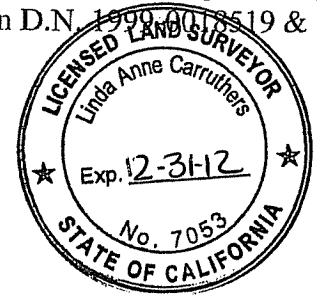
Corner --Left as found Found and tagged Established Reestablished Rebuilt

Identification and type of corner found: Evidence used to identify or procedure used to establish or reestablish the corner.

This survey is based upon found monuments shown on that certain Record of Survey, Lot Line Adjustment, entitled "Lands of Albury Living Trust, D.N. 1991-069757 and Lands of Danielson D.N. 1990-0118519 & 2003-0074033" Marin County Records.

A Description of the physical condition of the monument as found and as set or reset

See Sheet two.



SURVEYOR'S STATEMENT

This Corner Record was prepared by me or under my direction in conformance with the Professional Land Surveyor's Act on September 17, 2012

Signed Linda A. Carruthers P.L.S. 7053

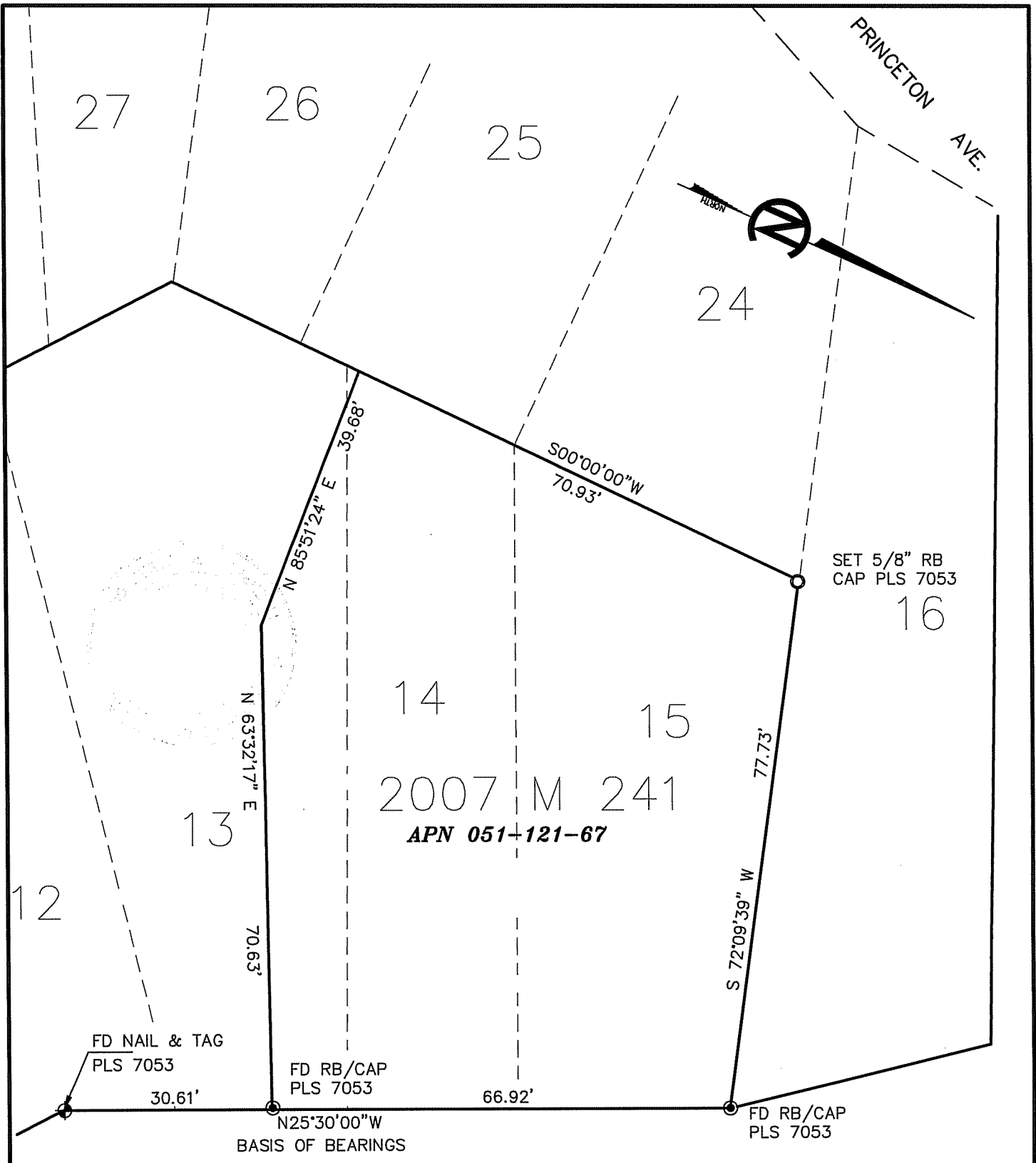
COUNTY SURVEYOR'S STATEMENT

This Corner Record was received OCTOBER 15, 2012 and examined and filed NOVEMBER 6, 2012.

Signed [Signature] Title COUNTY SURVEYOR



County Surveyor's Comments _____



2007 M 241
 APN 051-121-67

CALIFORNIA AVENUE
 (30' R/W)

CORNER RECORD APN 051-121-67 MILL VALLEY, CA	
LINDA A. CARRUTHERS & ASSOCIATES 2015 BRIDGEWAY, STE. 301D SAUSALITO, CA 94965	
SCALE: 1"=20'	DATE: SEPT. 2012
JOB NO. 06-554	SHEET 2 OF 2