

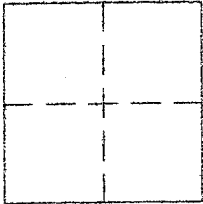
CORNER RECORD

Document Number APN 051-121-50

City of MILL VALLEY

County of MARIN, California

Brief Legal Description LOTS 16& 24 AND A PORTION OF 25, MAP OF MARIN TERRACES, 4 RM 44



CORNER TYPE

Government Corner Control
Meander Property
Rancho Other
Date of Survey OCTOBER 3, 2013

COORDINATES (Optional)

N. _____
E. _____
Zone _____ NAD27 NAD83
NAD83 Epoch: _____
Elev. _____
Vert. Datum: NGVD29 NAVD88
Meas. Units: Metric Imperial

Corner - Left as found Found and tagged Established Reestablished Rebuilt

Identification and type of corner found: Evidence used to identify or procedure used to establish or reestablish the corner:

FOUND RAILROAD SPIKES & 5/8" REBARS & CAPS PLS 7053 AS SHOWN ON 2007 MAPS 241
AND ON REVERSE

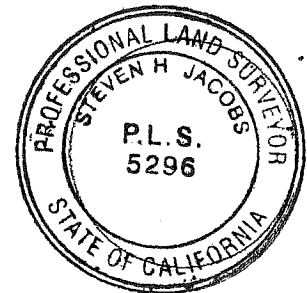
A description of the physical condition of the monument as found and as set or reset:

SET 3/4" IP'S & TAGS, PLS 5296 AS SHOWN ON REVERSE.

SURVEYOR'S STATEMENT

This Corner record was prepared by me or under my direction in conformance with the Land Surveyor's Act on OCTOBER 3, 2013

Signed [Signature] P.L.S. or R.C.E. No. PLS 5296



COUNTY SURVEYOR'S STATEMENT

This Corner Record was received APRIL 28, 2014

and examined and filed MAY 23, 2014

Signed [Signature] P.L.S. or R.C.E. No. 7821

Title DEPUTY

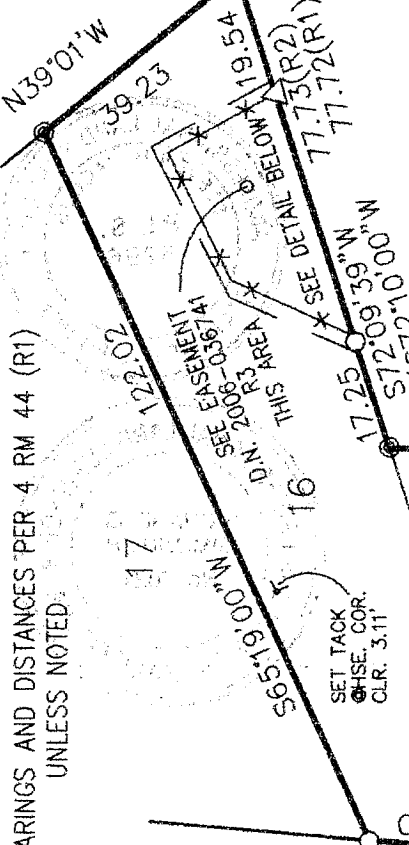


County Surveyor's Comment _____

NOTE

BEARINGS AND DISTANCES PER 4 RM 44 (R1)
UNLESS NOTED

PRINCETON (30' R/W) AVE



SEE 15
2007 MAPS 241 (R2)

APN 051-121-50

24

(EAST 74.42)

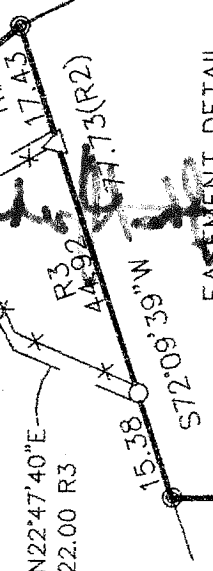
3.00

25

BLOCK 213

S28°53'30\"/>

EX. FENCE



EASTMENT DETAIL

LEGEND

- ⊕ FOUND RRS WITH '+' PER R2
- ⊙ FND. 5/8" REBAR & CAP PLS 7053 PER R2
- SET 3/4" IP & TAG PLS 5296
- △ SET TACK & TAG PLS 5296 IN FENCE
- TBA TOTAL BY ADDITION
- R1 11 RM 44
- R2 2007 RS 241
- R3 D.N. 2006--036741

MAP OF
MARIN TERRACES
4 RM 44
(R1)

CALIFORNIA (30' R/W) AVE

N25°30'W
97.53(R2)

30.61(R2)

7.58 (R2)

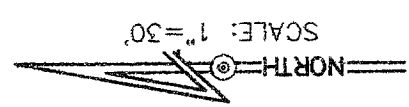
S37°58'03\"/>

13.04 (R2)

N53°36'00\"/>

99.92(R2)

59.98(R2)



JACOBS LAND SURVEYING
P.O. BOX 7829
COTATI, CA. 94931
415 454-2235

JOB NO.13-1353-M FB#72
DWG FILE:2013/OCTOBER/jonesCR2