

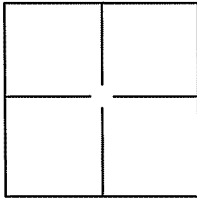
# CORNER RECORD

Document Number A.P.N. 051-095-06

City of Mill Valley

County of Marin, California

Brief Legal Description Lot 26, Map of Westeria, 154 Almonte Blvd., 3 R.M. 22.



### CORNER TYPE

Government Corner  Control   
 Meander  Property   
 Rancho  Other

Date of Survey 24 October 2008

### COORDINATES(Optional)

N. \_\_\_\_\_  
 E. \_\_\_\_\_  
 Zone \_\_\_\_\_ NAD27  NAD83   
 NAD83 Epoch \_\_\_\_\_  
 Elev. \_\_\_\_\_  
 Vert. Datum: NGVD29  NADV88   
 Meas. Units: Metric  Imperial

Corner - Left as found  Found and tagged  Established  Reestablished  Rebuilt

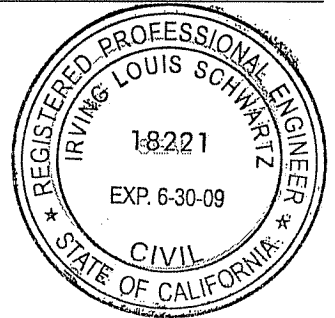
Identification and type of corner found: Evidence used to identify or procedure used to establish or reestablish the corner:  
Found 3/4" Iron Pipe and Yellow Cap L.S. 5065 (1), Found 1/2" Iron Pipe  
and Yellow Cap in Drainage Ditch L.S. 4402 (1), Found 3/4" Iron Pipe in Concrete Headwall -  
Open - No Tag (1) and Found 1/2" Rebar and Yellow Cap in Drainage Ditch "LS 4402" (1).

A description of the physical condition of the monument as found and as set or reset: \_\_\_\_\_  
Set NW, NE, SE, and SW corners (4 corners) on Lot 26, Set Ginney on northerly and southerly  
property lines (4), Set Brass Tag and Nail in Redwood Tree on northerly and southerly  
property lines (2), Set Mag Nail and Washer on easterly property line (1), Set + in Top of  
Concrete Steps on westerly property line (1), See Exhibit "A".

### SURVEYOR'S STATEMENT

This Corner Record was prepared by me or under my direction in conformance with  
 the Land Surveyor's Act on NOVEMBER 17, 2008.

Signed *Jerry Hoag* P.L.S. or R.C.E. No.: 18221



### COUNTY SURVEYOR'S STATEMENT

This Corner Record was received NOVEMBER 19, 2008 and examined  
 and filed DECEMBER 1, 2008.

Signed *Craig Tackabery* P.L.S. or R.C.E. No.: 7128

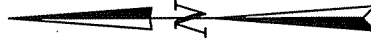
Title COUNTY SURVEYOR

County Surveyor's Comment \_\_\_\_\_



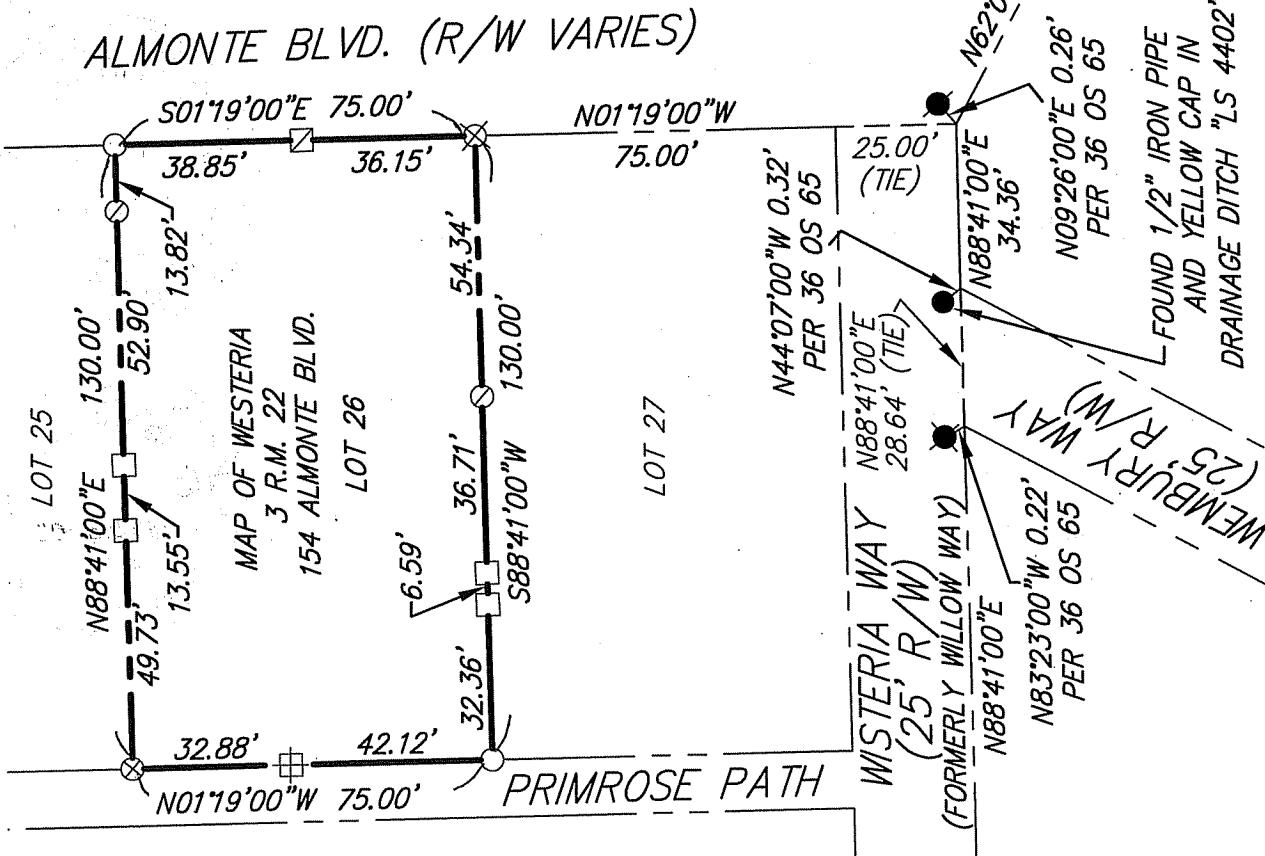
**LEGEND**

- SET 3/4" IRON PIPE & YELLOW CAP "R.C.E. 18221"
- ⊗ SET BRASS TAG & NAIL "R.C.E. 18221" IN CONCRETE AT BASE OF FENCE POST
- ⊗ SET BRASS TAG & NAIL "R.C.E. 18221" ON TOP OF SOUTH SIDE OF BRICK COLUMN
- ⊗ SET BRASS TAG & NAIL IN REDWOOD TREE "R.C.E. 18221" - POINT ON PROPERTY LINE (SET APPROX. 6' ABOVE GROUND)
- SET GINNEY - POINT ON PROPERTY LINE
- ⊕ SET "⊕" IN TOP OF CONCRETE STEPS - POINT ON PROPERTY LINE
- ⊗ SET MAG NAIL AND WASHER "R.C.E. 18221" - POINT ON PROPERTY LINE
- FOUND AS SHOWN
- FOUND 3/4" IRON PIPE IN CONCRETE HEADWALL - OPEN - NO TAG
- FOUND 1/2" REBAR & YELLOW CAP IN DRAINAGE DITCH "LS 4402"



SCALE: 1" = 40'

EXHIBIT "A"



**NOTE:**  
ALL DIMENSIONS AND BEARINGS SHOWN HEREON ARE PER 36 OS 65 AND 3 RM 22.

**I**LS ASSOCIATES, INC.®  
CIVIL ENGINEERING AND LAND SURVEYING

79 GALLI DRIVE, SUITE A, NOVATO, CA 94949-5717 (415) 885-6000 FAX (415) 885-2765

A.P.N. 051-095-06

DATE: 10/31/2008  
FILE: N:\P8000\B317CR.dwg