

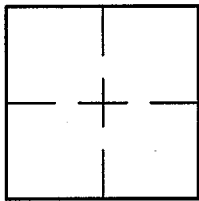
CORNER RECORD

Document Number A.P. 051-091-17,18

City of MILL VALLEY

County of MARIN, California

Brief Legal Description PARCEL 1 AND 2 PER 3 P.M. 37



CORNER TYPE **COORDINATES (Optional)**

Government Corner Control

Meander Property

Rancho Other

Date of Survey 1/7/2013

N. _____
 E. _____
 Zone _____ NAD27 NAD83
 NAD83 Epoch _____
 Elev. _____
 Vert. Datum: NGVD29 NAVD88
 Meas. Units: Metric Imperial

Corner- Left as found Found and tagged Established Reestablished Rebuilt

Identification and type of corner found: Evidence used to identify or procedure used to establish or reestablish the corner:
REESTABLISHED THE BOUNDARIES OF PARCEL 1 AND PARCEL 2 USING FOUND POINTS AS SHOWN ON
3 P.M. 37 AND AS SHOWN ON SHEET 2.

A description of the physical condition of the monument as found and as set or reset: SEE SHEET 2.

SURVEYOR'S STATEMENT

This Corner Record was prepared by me or under my direction in conformance with

the Land Surveyor's Act on JANUARY 7, 2013

Signed Lawrence P. Doyle P.L.S. or R.C.E. No. P.L.S. 4694



COUNTY SURVEYOR'S STATEMENT

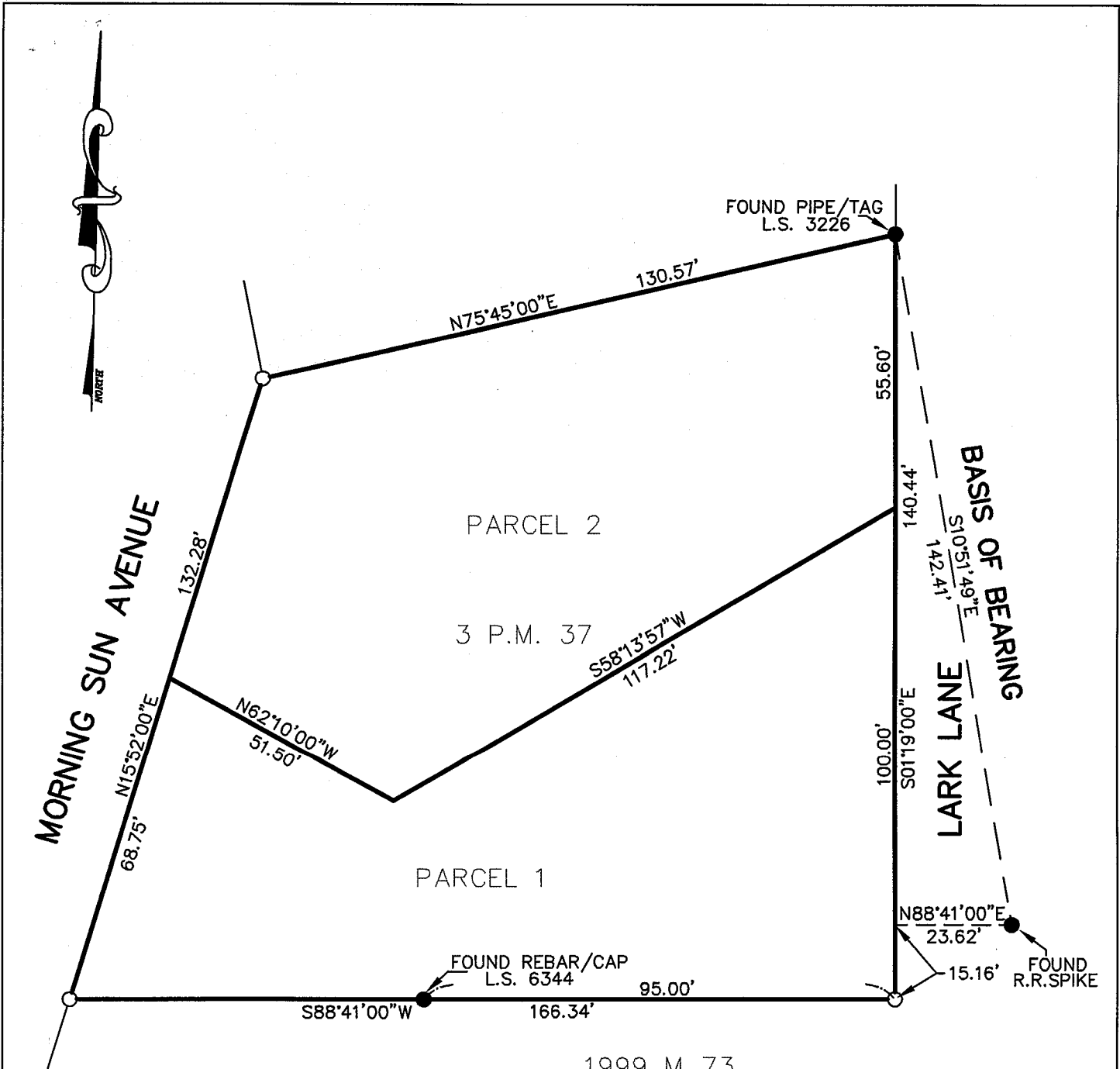
This Corner Record was received _____

and examined and filed _____

Signed _____ P.L.S. or R.C.E. No. _____

Title _____

County Surveyor's Comment _____



LEGEND

- SET PIPE AND PLUG L.S. 4694
- FOUND MONUMENT AS NOTED

BASIS OF BEARING

THE BASIS OF BEARING IS S10°51'49"E BETWEEN A FOUND RR SPIKE AND A FOUND PIPE/TAG L.S. 3226 PER 3 P.M. 37



1999 M 73

CORNER RECORD		
A.P. 051-091-17,18		
MARIN COUNTY CALIFORNIA		
SCALE: 1" = 30'	LAWRENCE P. DOYLE	DRAWN BY:
DATE: 1/7/2013		SHEET 2 OF 2
LAND SURVEYOR/CIVIL ENGINEER		
100 HELENS LANE MILL VALLEY CA 94941 (415-388-9585)		
		DRAWING NO.
		2320