

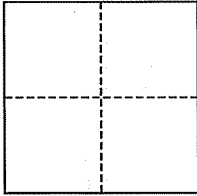
CORNER RECORD

City of Mill Valley

Document Number APN 51-045-04

County of Marin, California

Brief Legal Description Lot 26, 4 RM 44, BLOCK 205



CORNER TYPE

Government Corner Control
Meander Property
Rancho Other
Date of Survey May 2, 2006

COORDINATES (Optional)

N. _____
E. _____
Zone _____ NAD27 NAD83
NAD83 Epoch _____
Elev. _____
Vert. Datum: NGVD29 NAVD88
Meas. Units: Metric Imperial

Corner- Left as found Found and tagged Established Reestablished Rebuilt

Identification and type of corner found: Evidence used to identify or procedure used to establish or reestablish the corner:
All points set per 2004 ROS 312

A description of the physical condition of the monument as found and as set or reset: Iron Pipe & Plugs, RCE 30465,
were set on the south-easterly corners, the south-westerly corner was set 6.0' northerly along the north-
westerly line due to obstructions, and the north-easterly corner was set 1.0' southerly from the corner
along the south-easterly line due to obstructions

SURVEYOR'S STATEMENT

This corner Record was prepared by me or under my direction in conformance with
the Land Surveyor's Act on May 4, 2006

Signed [Signature] P.L.S. or R.C.E. No. 30465



COUNTY SURVEYOR'S STATEMENT

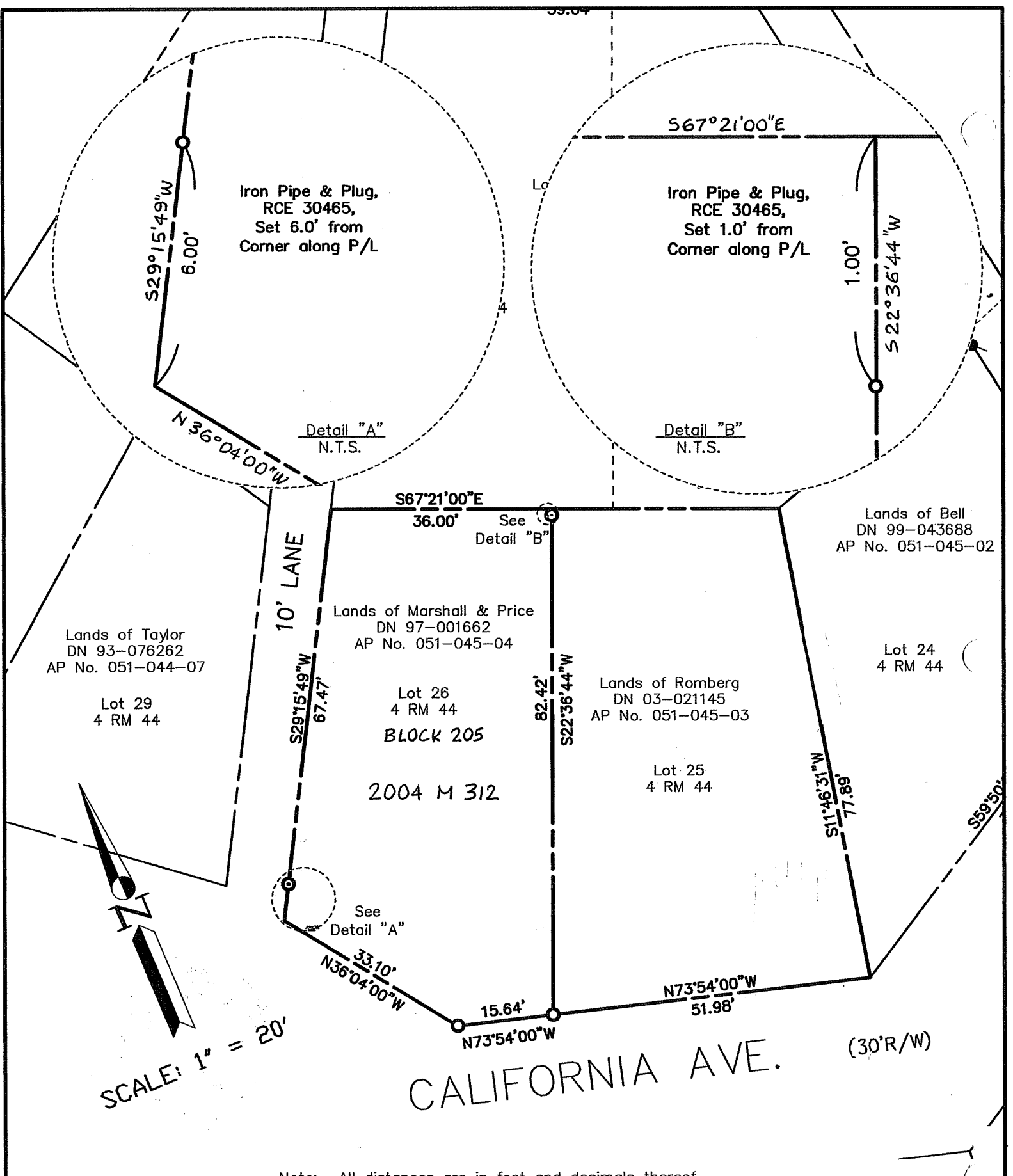
This Corner Record was received MAY 8, 2006
and examined and filed MAY 26, 2006

Signed [Signature] P.L.S. or R.C.E. No. 7128

Title COUNTY SURVEYOR



County Surveyor's Comment _____



Note: All distances are in feet and decimals thereof.

SHEET	1	OF	1
SCALE:	1" = 20'	DESIGN:	XXX
DATE:	2004-05-06	DRAWN:	XXX
FILE:	2004-082	CHECKED:	J.L.H
2004-082\DWG\COR-REC.DWG,COR-REC			

J.L. ENGINEERING
CIVIL ENGINEERS-LAND SURVEYORS
 1539 4th ST., SAN RAFAEL, CA. 94901 (415) 457-6647

Corner Record
 Lands of Price & Marshal - 131 California Ave.
 APN 051-045-04, Mill Valley, Marin County, CA