



**JERRICO ASSOCIATES**  
 SUITE 27  
 77 MARK DRIVE  
 SAN RAFAEL, CA 94903

A.P. # 51-044-13

6658

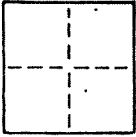
**CORNER RECORD**

1/4

COUNTY OF Marin T. \_\_\_\_\_ R. \_\_\_\_\_ MERIDIAN \_\_\_\_\_ CALIFORNIA

CORNER TYPE: GOVT. CORNER  MEANDER  RANCHO  CONTROL  OTHER

CORNER IDENTIFICATION — DATE OF VISIT \_\_\_\_\_ 19\_\_\_\_



CORNER — LEFT AS FOUND  FOUND AND TAGGED  REESTABLISHED OBLITERATED CORNER  REBUILT

PHYSICAL DESCRIPTION OF CORNER FOUND; EVIDENCE AND METHOD USED TO IDENTIFY OR REESTABLISH

Found hub and L.S. 2897 at fence corner.

- Found  $\frac{1}{2}$ " re-bar w/ Iron Pipe guard at fence angle point.

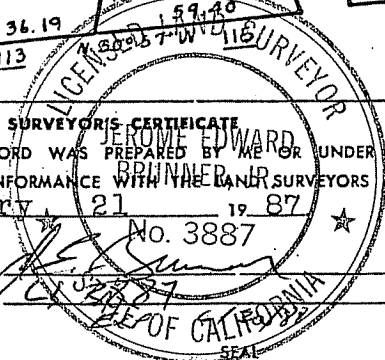
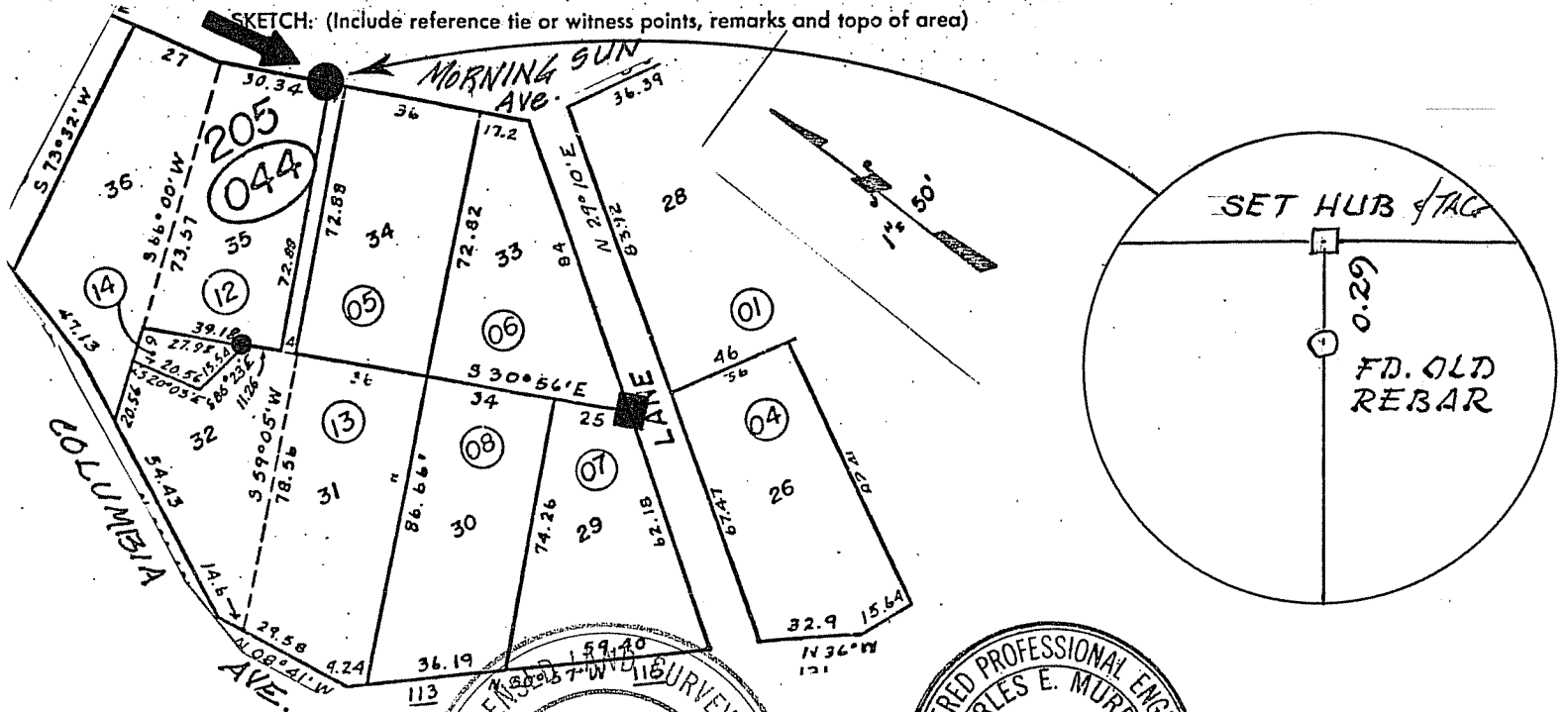
Block 205, Marin Terrace, Sub. No.2 Marin Heights, 4 R.M. 44

PHYSICAL DESCRIPTION OF MONUMENTS REBUILT OR PERPETUATED

Set Hub and L.S. 3887 tag

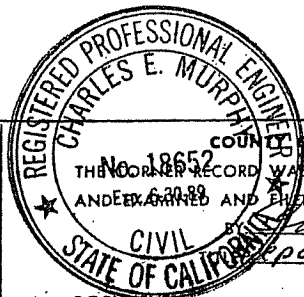
CALIFORNIA COORDINATE SYSTEM ORDER: FIRST  SECOND  THIRD   
 STATIONS USED: NGS (USC & GS)  STATE  COUNTY  OTHER  STATION \_\_\_\_\_ STATION \_\_\_\_\_  
 ZONE \_\_\_\_\_ ELEVATION \_\_\_\_\_ NORTHINGS (Y) \_\_\_\_\_ EASTINGS (X) \_\_\_\_\_

SKETCH: (Include reference tie or witness points, remarks and topo of area)



SURVEYOR'S CERTIFICATE  
 THIS CORNER RECORD WAS PREPARED BY ME OR UNDER MY DIRECTION IN CONFORMANCE WITH THE LAND SURVEYORS ACT ON January 21 1987

SIGNED: \_\_\_\_\_  
 L.S. or R.C.E. No. \_\_\_\_\_



COUNTY SURVEYOR'S CERTIFICATE  
 THIS CORNER RECORD WAS RECEIVED May 6 1987  
 AND EXAMINED AND FILED May 6 1987  
 \_\_\_\_\_  
 CIVIL \_\_\_\_\_  
 STATE OF CALIFORNIA Deputy County Surveyor

DOCUMENT No. \_\_\_\_\_  
 STATEMENT ON BACK OF SHEET YES  NO



**JERRICO ASSOCIATES**  
 SUITE 27  
 77 MARK DRIVE  
 SAN RAFAEL, CA 94903

51-044-13

6658

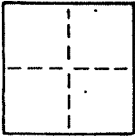
**CORNER RECORD**

2/4

COUNTY OF Marin T. \_\_\_\_\_ R. \_\_\_\_\_ MERIDIAN \_\_\_\_\_ CALIFORNIA

CORNER TYPE: GOVT. CORNER  MEANDER  RANCHO  CONTROL  OTHER

CORNER IDENTIFICATION — DATE OF VISIT \_\_\_\_\_ 19\_\_\_\_



CORNER — LEFT AS FOUND  FOUND AND TAGGED  REESTABLISHED OBLITERATED CORNER  REBUILT

PHYSICAL DESCRIPTION OF CORNER FOUND; EVIDENCE AND METHOD USED TO IDENTIFY OR REESTABLISH

Found hub and L.S. 2897 at fence corner.

Found  $\frac{1}{2}$ " re-bar w/ Iron Pipe guard at fence angle point.

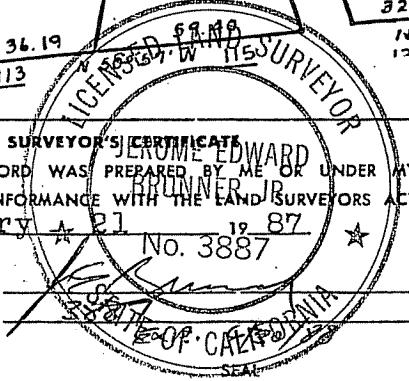
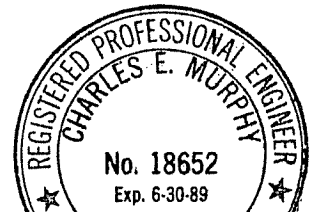
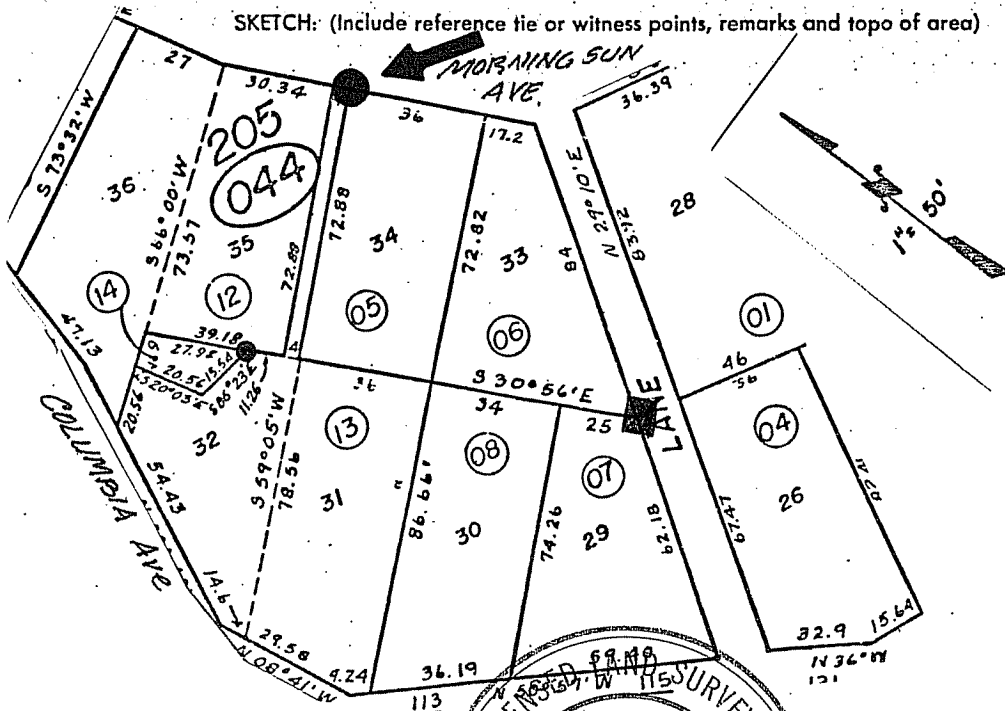
Block 205, Marin Terrace, Sub. No.2 Marin Heights, 4 R.M. 44

PHYSICAL DESCRIPTION OF MONUMENTS REBUILT OR PERPETUATED

Set Hub and L.S. 3887 tag

CALIFORNIA COORDINATE SYSTEM ORDER: FIRST  SECOND  THIRD   
 STATIONS USED: NGS (USC & GS)  STATE  COUNTY  OTHER  STATION \_\_\_\_\_ STATION \_\_\_\_\_  
 ZONE \_\_\_\_\_ ELEVATION \_\_\_\_\_ NORTHINGS (Y) \_\_\_\_\_ EASTINGS (X) \_\_\_\_\_

SKETCH: (Include reference tie or witness points, remarks and topo of area)

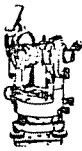


SURVEYOR'S CERTIFICATE  
 THIS CORNER RECORD WAS PREPARED BY ME OR UNDER MY DIRECTION IN CONFORMANCE WITH THE LAND SURVEYORS ACT ON January 21 1987  
 No. 3887

SIGNED: \_\_\_\_\_  
 L.S. or R.C.E. No.: \_\_\_\_\_

COUNTY SURVEYOR'S CIVIL ENGINEER  
 STATE OF CALIFORNIA  
 THE CORNER RECORD WAS RECEIVED AND EXAMINED AND FILED May 12 1987  
 BY Charles E. Murphy  
 TITLE: Deputy County Surveyor

DOCUMENT No. \_\_\_\_\_  
 STATEMENT ON BACK OF SHEET YES  NO



**JERRICO ASSOCIATES**  
 SUITE 27  
 77 MARK DRIVE  
 SAN RAFAEL, CA 94903

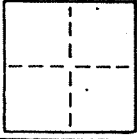
51-044-13

6658

**CORNER RECORD**

3/4

COUNTY OF Marin T. \_\_\_\_\_ R. \_\_\_\_\_ MERIDIAN \_\_\_\_\_ CALIFORNIA  
 CORNER TYPE: GOVT. CORNER  MEANDER  RANCHO  CONTROL  OTHER   
 CORNER IDENTIFICATION — DATE OF VISIT \_\_\_\_\_ 19\_\_\_\_



CORNER — LEFT AS FOUND  FOUND AND TAGGED  REESTABLISHED OBLITERATED CORNER  REBUILT

PHYSICAL DESCRIPTION OF CORNER FOUND; EVIDENCE AND METHOD USED TO IDENTIFY OR REESTABLISH

Found hub and L.S. 2897 at fence corner.

- Found 1/2" re-bar w/ Iron Pipe guard at fence angle point.

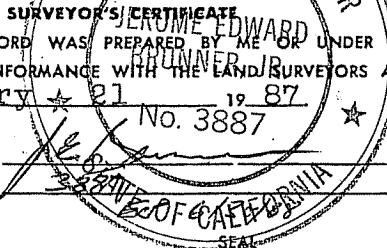
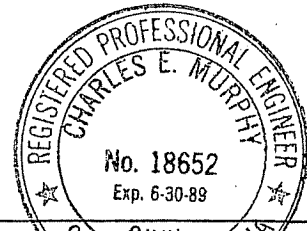
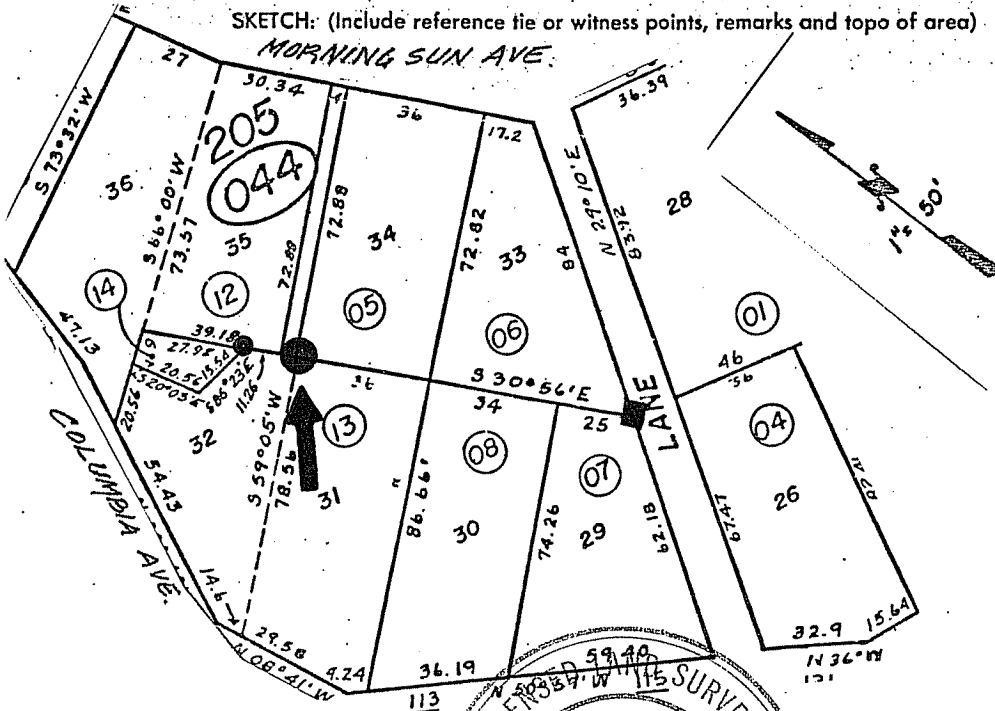
Block 205, Marin Terrace, Sub. No.2 Marin Heights, 4 R.M. 44

PHYSICAL DESCRIPTION OF MONUMENTS REBUILT OR PERPETUATED

Set tack and L.S. 3887 tag in top of fence.

CALIFORNIA COORDINATE SYSTEM ORDER: FIRST  SECOND  THIRD   
 STATIONS USED: NGS (USC & GS)  STATE  COUNTY  OTHER  STATION \_\_\_\_\_ STATION \_\_\_\_\_  
 ZONE \_\_\_\_\_ ELEVATION \_\_\_\_\_ NORTHINGS (Y) \_\_\_\_\_ EASTINGS (X) \_\_\_\_\_

SKETCH: (Include reference tie or witness points, remarks and topo of area)



**SURVEYOR'S CERTIFICATE**  
 THIS CORNER RECORD WAS PREPARED BY ME OR UNDER MY DIRECTION IN CONFORMANCE WITH THE LAND SURVEYORS ACT ON January 21 1987  
 No. 3887

SIGNED: \_\_\_\_\_  
 L.S. or R.C.E. No.: \_\_\_\_\_

**COUNTY SURVEYOR'S CERTIFICATE**  
 THE CORNER RECORD WAS RECEIVED May 6 1987  
 AND EXAMINED AND FILED May 12 1987  
 BY Charles E. Murphy  
 TITLE: Deputy County Surveyor

DOCUMENT No. \_\_\_\_\_

STATEMENT ON BACK OF SHEET

YES  NO



**JERRICO ASSOCIATES**  
 SUITE 27  
 77 MARK DRIVE  
 SAN RAFAEL, CA 94903

51-044-13

6658

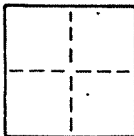
**CORNER RECORD**

4/4

COUNTY OF Marin T. \_\_\_\_\_ R. \_\_\_\_\_ MERIDIAN \_\_\_\_\_ CALIFORNIA

CORNER TYPE: GOVT. CORNER  MEANDER  RANCHO  CONTROL  OTHER

CORNER IDENTIFICATION — DATE OF VISIT \_\_\_\_\_ 19\_\_\_\_



CORNER — LEFT AS FOUND  FOUND AND TAGGED  REESTABLISHED OBLITERATED CORNER  REBUILT

PHYSICAL DESCRIPTION OF CORNER FOUND; EVIDENCE AND METHOD USED TO IDENTIFY OR REESTABLISH

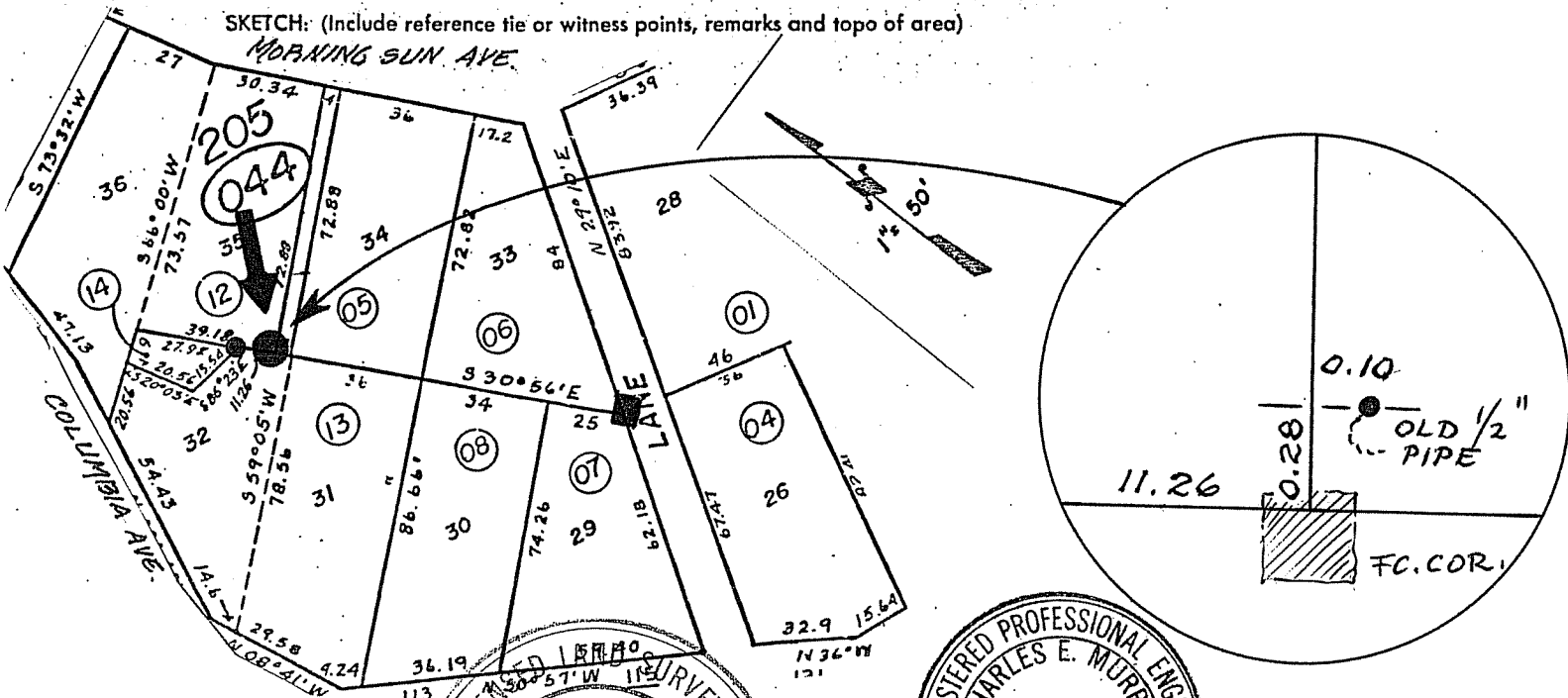
- Found hub and L.S. 2897 at fence corner.
  - Found  $\frac{1}{2}$ " re-bar w/ Iron Pipe guard at fence angle point.
- Block 205, Marin Terrace, Sub. No.2 Marin Heights, 4 R.M. 44

PHYSICAL DESCRIPTION OF MONUMENTS REBUILT OR PERPETUATED

Found old  $\frac{1}{2}$ " I.P. at fence corner.

CALIFORNIA COORDINATE SYSTEM ORDER: FIRST  SECOND  THIRD   
 STATIONS USED: NGS (USC & GS)  STATE  COUNTY  OTHER  STATION \_\_\_\_\_ STATION \_\_\_\_\_  
 ZONE \_\_\_\_\_ ELEVATION \_\_\_\_\_ NORTHINGS (Y) \_\_\_\_\_ EASTINGS (X) \_\_\_\_\_

SKETCH: (Include reference tie or witness points, remarks and topo of area)



SURVEYOR'S CERTIFICATE  
 THIS CORNER RECORD WAS PREPARED BY ME OR UNDER MY DIRECTION IN CONFORMANCE WITH THE LAND SURVEYORS ACT ON January 27 1987  
 No. 3887

SIGNED: \_\_\_\_\_  
 L.S. or R.C.E. No.: \_\_\_\_\_  
 STATE OF CALIFORNIA

REGISTERED PROFESSIONAL ENGINEER  
 CHARLES E. MURPHY  
 No. 18652  
 Exp. 6-30-88  
 COUNTY SURVEYOR'S CERTIFICATE  
 THE CORNER RECORD WAS RECEIVED May 6 1987  
 AND EXAMINED AND FILED May 12 1987  
 STATE OF CALIFORNIA  
 Deputy County Surveyor

DOCUMENT No. \_\_\_\_\_  
 STATEMENT ON BACK OF SHEET YES  NO