

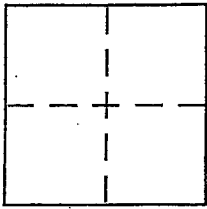
**CORNER RECORD**

Document Number 050-251-18

City of Vicinity Mill Valley

County of MARIN, California

Brief Legal Description Control Monument, Set @ 12 RS 100, Shown on 12 PM 88



**CORNER TYPE**

Government Corner  Control   
Meander  Property   
Rancho  Other   
Date of Survey \_\_\_\_\_

**COORDINATES (Optional)**

N. \_\_\_\_\_  
E. \_\_\_\_\_  
Zone \_\_\_\_\_ NAD27  NAD83   
NAD83 Epoch \_\_\_\_\_  
Elev. \_\_\_\_\_  
Vert. Datum: NGVD29  NAVD88   
Meas. Units: Metric  Imperial

Corner - Left as found  Found and tagged  Established  Reestablished  Rebuilt

Identification and type of corner found: Evidence used to identify or procedure used to establish or reestablish the corner:

Found RR Spike on Pine Street, referenced to rebuild after planned repaving. See Back

A description of the physical condition of the monument as found and as set or reset:

See Back

**SURVEYOR'S STATEMENT**

This Corner Record was prepared by me or under my direction in conformance with the Land Surveyor's Act on May 22 2114

Signed Michael G. Brogan P.L.S or R.C.E. No. LS 5767



**COUNTY SURVEYOR'S STATEMENT**

This Corner Record was received JUNE 16, 2014

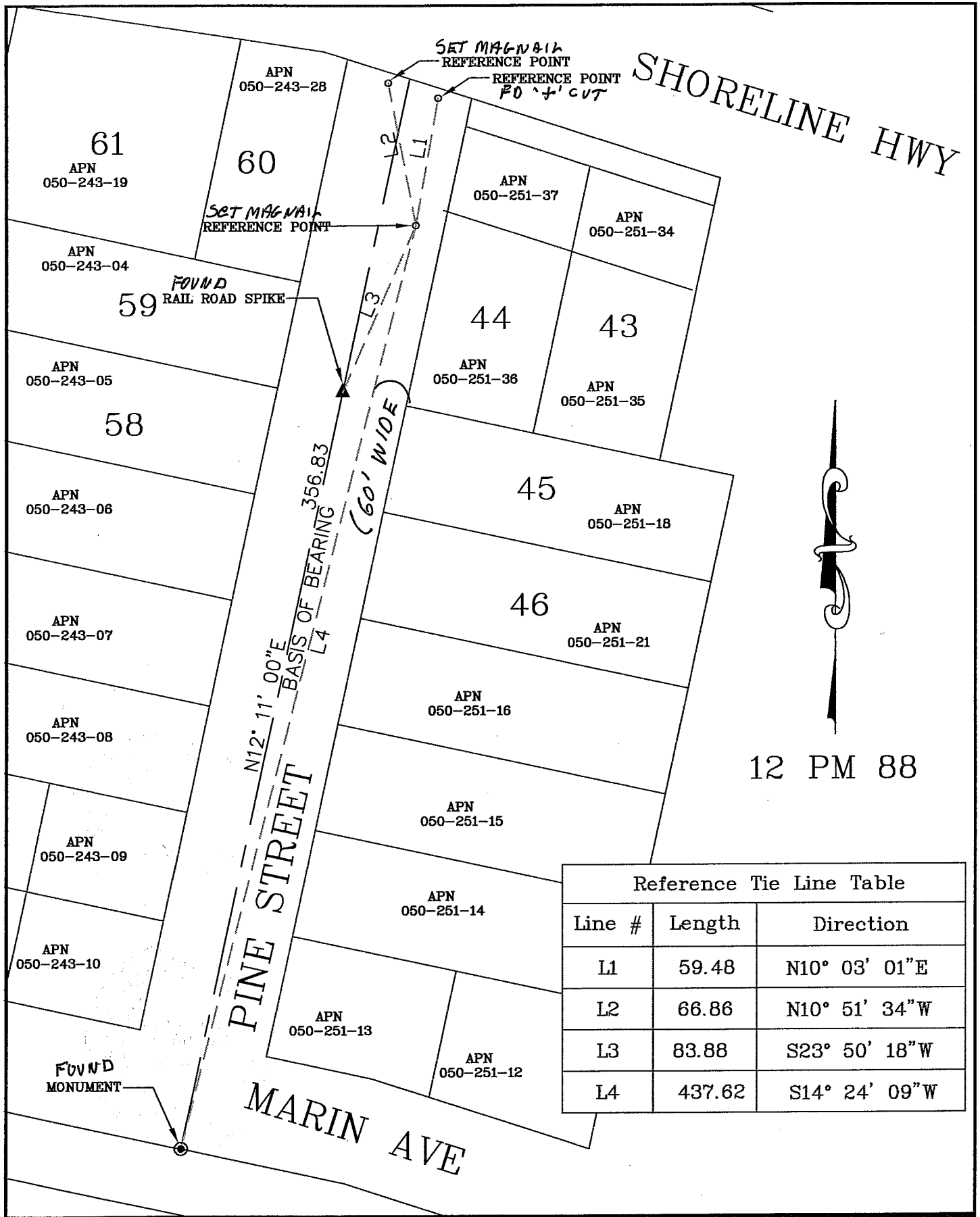
and examined and filed JULY 8<sup>th</sup> 2014

Signed Richard G. Simonitch P.L.S or R.C.E. No. 7821

Title DEPUTY



County Surveyor's Comment \_\_\_\_\_



Reference Tie Line Table		
Line #	Length	Direction
L1	59.48	N10° 03' 01"E
L2	66.86	N10° 51' 34"W
L3	83.88	S23° 50' 18"W
L4	437.62	S14° 24' 09"W