

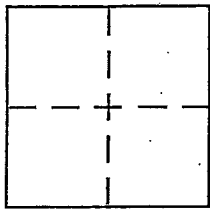
**CORNER RECORD**

Document Number APN 050-241-10

City of Near Mill Valley, Tamalpais Valley

County of MARIN, California

Brief Legal Description Control Monument - Ash Street - 2 R.M. 119 - 21 a.s. 28



**CORNER TYPE**

Government Corner  Control   
Meander  Property   
Rancho  Other   
Date of Survey \_\_\_\_\_

**COORDINATES (Optional)**

N. \_\_\_\_\_  
E. \_\_\_\_\_  
Zone \_\_\_\_\_ NAD27  NAD83   
NAD83 Epoch \_\_\_\_\_  
Elev. \_\_\_\_\_  
Vert. Datum: NGVD29  NAVD88   
Meas. Units: Metric  Imperial

Corner - Left as found  Found and tagged  Established  Reestablished  Rebuilt

Identification and type of corner found: Evidence used to identify or procedure used to establish or reestablish the corner:

1" IRON PIPE, LS 4694 as per 21 O.S. 28, on Ash Street  
185' +/- North of MARIN AVE.

Pipe referenced out, to be rebuilt as county monument  
after planned repaving job.

A description of the physical condition of the monument as found and as set or reset:

Mon o.k. - referenced out - see sketch on back

**SURVEYOR'S STATEMENT**

This Corner Record was prepared by me or under my direction in conformance with the Land Surveyor's Act on Feb 24 2014

Signed Michael G. Brogan P.L.S. or R.C.E. No. LS 5767  
Chief of Surveys MARIN Co DPW

**COUNTY SURVEYOR'S STATEMENT**

This Corner Record was received JUNE 16, 2014

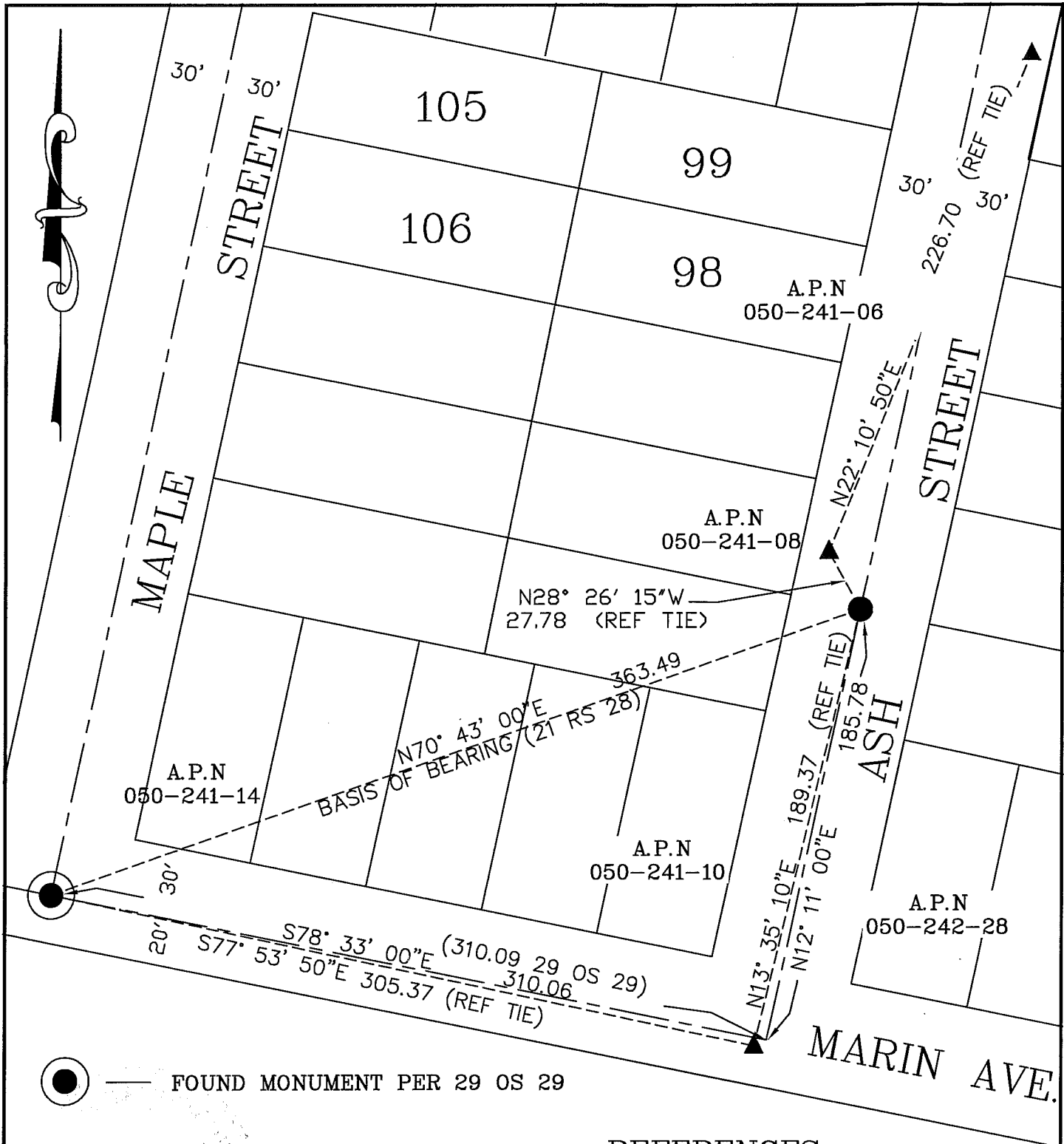
and examined and filed JUNE 25<sup>th</sup>, 2014

Signed Richard G. Simonitch P.L.S. or R.C.E. No. 7821

Title DEPUTY

County Surveyor's Comment \_\_\_\_\_





● — FOUND MONUMENT PER 29 OS 29

▲ — SET MAG NAIL

● — FOUND IRON PIPE

REFERENCES:  
 21 RS 28  
 29 OS 29

COUNTY OF MARIN  
 DEPARTMENT OF PUBLIC WORKS  
 SURVEY SECTION

SCALE: 1" = 60'

CORNER RECORD