

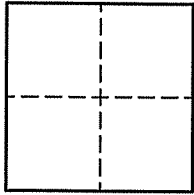
CORNER RECORD

Document Number A.P. 050-201-05

City of MILL VALLEY

County of MARIN, California

Brief Legal Description LOT 8, PER 4 R.M. 99



CORNER TYPE

Government Corner Control

Meander Property

Rancho Other

Date of Survey 03/10/08

COORDINATES (Optional)

N. _____

E. _____

Zone _____ NAD27 NAD83

NAD83 Epoch _____

Elev. _____

Vert. Datum: NGVD29 NAVD88

Meas. Units: Metric Imperial

Corner- Left as found Found and tagged Established Reestablished Rebuilt

Identification and type of corner found: Evidence used to identify or procedure used to establish or reestablish the corner:

ESTABLISHED WESTERN PROPERTY CORNER FOR LOT 8 USING FOUND POINTS PER 4 P.M. 54

AND CORNER RECORD 050-211-201 AND AS SHOWN ON SHEET 2.

A description of the physical condition of the monument as found and as set or reset: SEE SHEET 2.

SURVEYOR'S STATEMENT

This Corner Record was prepared by me or under my direction in conformance with

the Land Surveyor's Act on MARCH 14 2008

Signed Lawrence P. Doyle P.L.S. or R.C.E. No. P.L.S. 4694



COUNTY SURVEYOR'S STATEMENT

This Corner Record was received APRIL 14, 2008

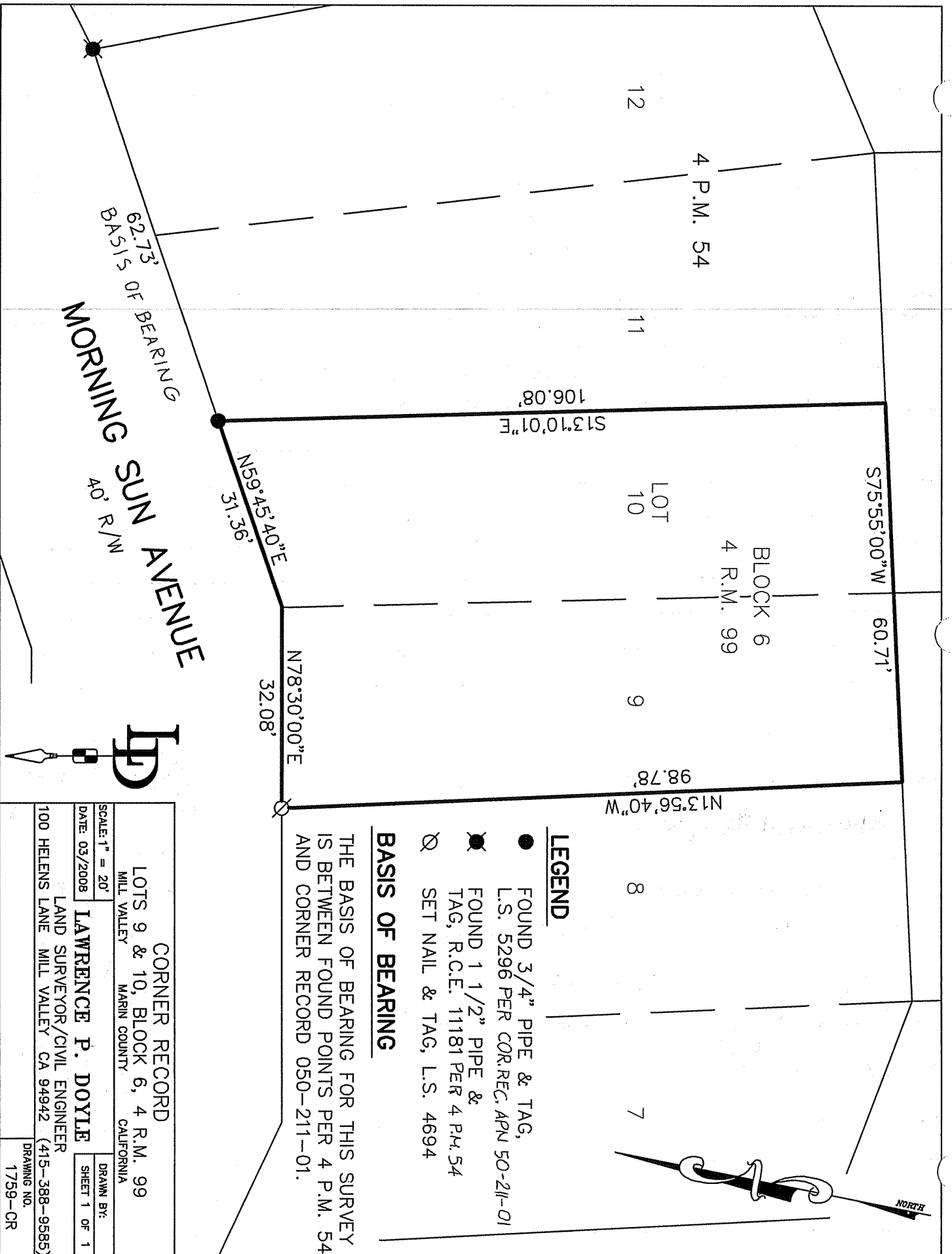
and examined and filed MAY 8, 2008

Signed [Signature] P.L.S. or R.C.E. No. 7128

Title COUNTY SURVEYOR

County Surveyor's Comment _____





LEGEND

- FOUND 3/4" PIPE & TAG, L.S. 5296 PER COR.REC. APN 50-211-01
- ⊗ FOUND 1 1/2" PIPE & TAG, R.C.E. 11181 PER 4 P.M. 54
- ⊙ SET NAIL & TAG, L.S. 4694

BASIS OF BEARING

THE BASIS OF BEARING FOR THIS SURVEY IS BETWEEN FOUND POINTS PER 4 P.M. 54 AND CORNER RECORD 050-211-01.

CORNER RECORD	
LOTS 9 & 10, BLOCK 6, 4 R.M. 99	
MILL VALLEY MARIN COUNTY CALIFORNIA	LPD
SCALE: 1" = 20'	DRAWN BY:
DATE: 03/2008	SHEET 1 OF 1
LAWRENCE P. DOYLE	
LAND SURVEYOR/CIVIL ENGINEER	
100 HELENS LANE MILL VALLEY CA 94942 (415-388-9585)	
DRAWING NO.	1759-CR