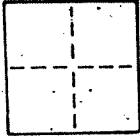


CORNER RECORD

COUNTY OF MARIN T. 1N R. 6W M.D. B & M MERIDIAN CALIFORNIA

CORNER TYPE: GOVT. CORNER MEANDER RANCHO CONTROL OTHER

CORNER IDENTIFICATION — DATE OF VISIT MAY 29 1991



CORNER — LEFT AS FOUND FOUND AND TAGGED REESTABLISHED OBLITERATED CORNER REBUILT

PHYSICAL DESCRIPTION OF CORNER FOUND; EVIDENCE AND METHOD USED TO IDENTIFY OR REESTABLISH

See sketch

PHYSICAL DESCRIPTION OF MONUMENTS, REBUILT OR PERPETUATED

See sketch.

CALIFORNIA COORDINATE SYSTEM ORDER: FIRST SECOND THIRD

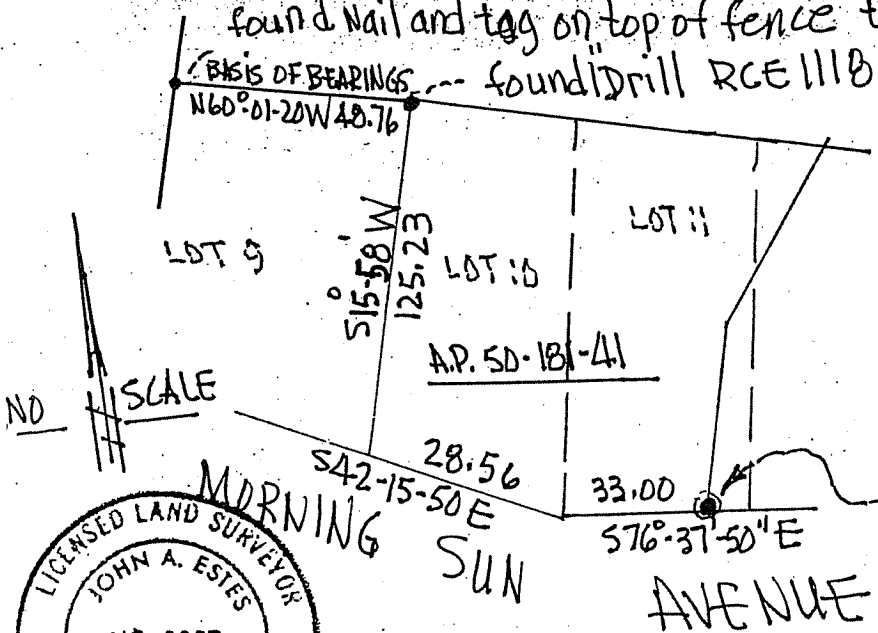
STATIONS USED: NGS (USC & GS) STATE COUNTY OTHER STATION _____ STATION _____

ZONE _____ ELEVATION _____ NORTHINGS (Y) _____ EASTINGS (X) _____

SKETCH: (Include reference tie or witness points, remarks and topo of area)

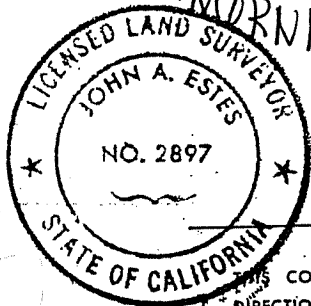
found Nail and tag on top of fence tag RCE 11181 per 13-O.S.-19

found drill RCE 11181 per 8-O.S.-1



BLOCK 5 MARIN HEIGHTS SUB. "B"
4-R.M.-99, AS SHOWN ON
Record of Survey 8-O.S.-1
Marin County Records

Set Nail and tag L.S. 2897
in indicated position of corner
shown on 8-O.S.-1 (no point found)



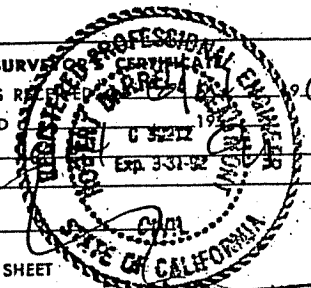
SURVEYOR'S CERTIFICATE
THIS CORNER RECORD WAS PREPARED BY ME OR UNDER MY
DIRECTION IN CONFORMANCE WITH THE LAND SURVEYORS ACT
ON JUNE 16 1991

SIGNED: John A. Estes
L.S. or R.C.E. No.: L.S. 2897 My license expires 6-30-92

COUNTY SURVEYOR'S CERTIFICATE
THE CORNER RECORD WAS REESTABLISHED
AND EXAMINED AND FILED

BY: _____
TITLE: _____

DOCUMENT No. _____
STATEMENT ON BACK OF SHEET _____



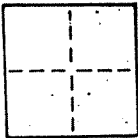
CORNER RECORD

2 of 3

COUNTY OF MARIN T. 1N R. 6W MDB&M MERIDIAN CALIFORNIA

CORNER TYPE: GOVT. CORNER MEANDER RANCHO CONTROL OTHER

CORNER IDENTIFICATION — DATE OF VISIT May 28 1991



CORNER — LEFT AS FOUND FOUND AND TAGGED REESTABLISHED OBLITERATED CORNER REBUILT

PHYSICAL DESCRIPTION OF CORNER FOUND; EVIDENCE AND METHOD USED TO IDENTIFY OR REESTABLISH

See sketch

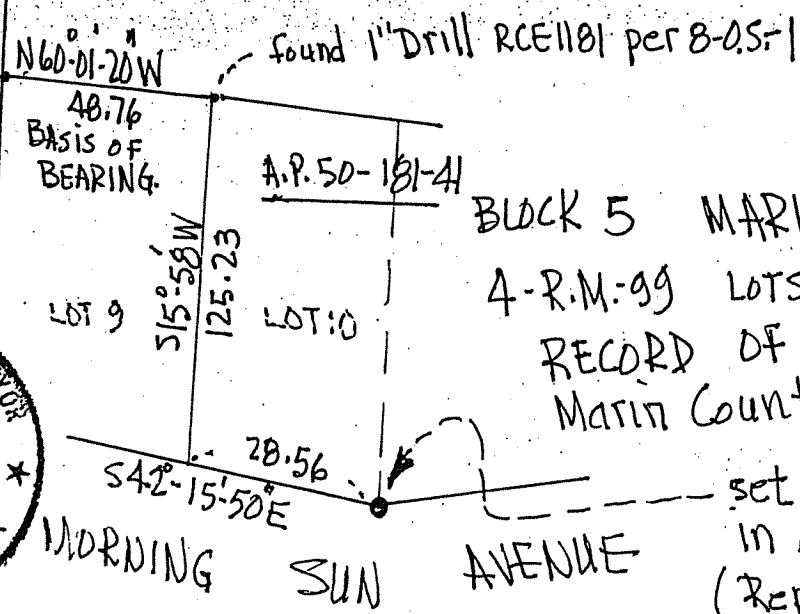
PHYSICAL DESCRIPTION OF MONUMENTS, REBUILT OR PERPETUATED

See sketch.

CALIFORNIA COORDINATE SYSTEM ORDER: FIRST SECOND THIRD
 STATIONS USED: NGS (USC & GS) STATE COUNTY OTHER STATION _____ STATION _____
 ZONE _____ ELEVATION _____ NORTHINGS (Y) _____ EASTINGS (X) _____

SKETCH: (Include reference tie or witness points, remarks and topo of area)

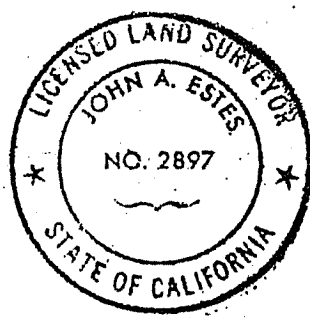
found Nail and tag on fence RCE 11181 per 13-05-19



NOT TO SCALE

BLOCK 5 MARIN HEIGHTS SUB. "B"
 4-R.M.-99 LOTS AS SHOWN ON
 RECORD OF SURVEY 8-0-5-1
 Marin County Records.

set nail and tag L.S. 2897 in ~~corner~~ A.C. Drive (Replaces original hub tagged RCE 11181)



SURVEYOR'S CERTIFICATE
 THIS CORNER RECORD WAS PREPARED BY ME OR UNDER MY DIRECTION IN CONFORMANCE WITH THE LAND SURVEYORS ACT ON JUNE 6 1991
 SIGNED: [Signature]
 L.S. or R.C.E. No.: L.S. 2897 my license expires 6-30-92

COUNTY SURVEYOR'S PROFESSIONAL ENGINEER
 THE CORNER RECORD WAS RECEIVED AND EXAMINED AND FILED BY: [Signature] TITLE: _____ DOCUMENT No. _____ STATEMENT ON BACK OF SHEET _____

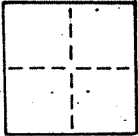
CORNER RECORD

3 of 3

COUNTY OF MARIN T. 1N R. 6W M.D.BEM MERIDIAN CALIFORNIA

CORNER TYPE: GOVT. CORNER MEANDER RANCHO CONTROL OTHER

CORNER IDENTIFICATION — DATE OF VISIT May 28 1991



CORNER — LEFT AS FOUND FOUND AND TAGGED REESTABLISHED OBLITERATED CORNER REBUILT

PHYSICAL DESCRIPTION OF CORNER FOUND; EVIDENCE AND METHOD USED TO IDENTIFY OR REESTABLISH

see sketch

PHYSICAL DESCRIPTION OF MONUMENTS, REBUILT OR PERPETUATED

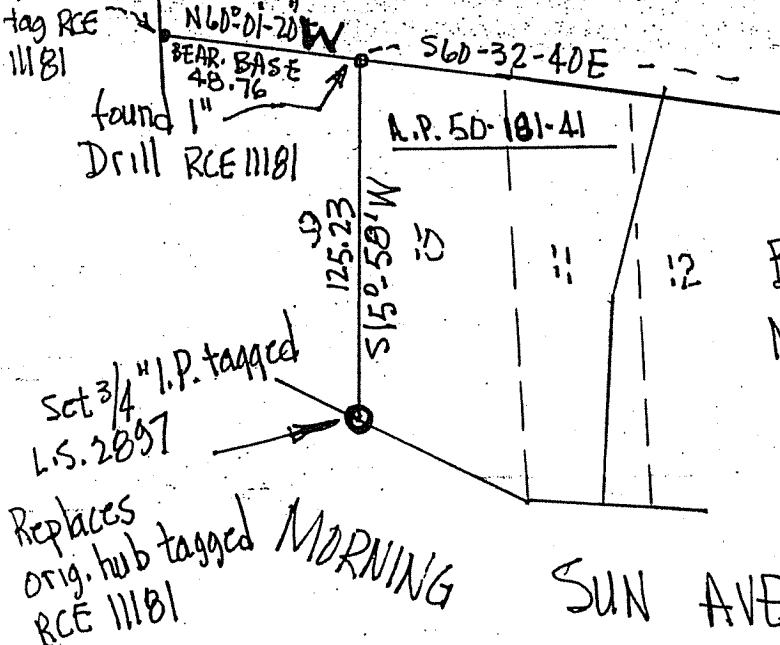
see sketch.

CALIFORNIA COORDINATE SYSTEM ORDER: FIRST SECOND THIRD
 STATIONS USED: NGS (USC & GS) STATE COUNTY OTHER STATION _____ STATION _____
 ZONE _____ ELEVATION _____ NORTHINGS (Y) _____ EASTINGS (X) _____

See 13-05-19

und. Nail
tag RCE 11181

SKETCH: (Include reference tie or witness points, remarks and topo of area)



SKETCH FROM RECORD OF
 SURVEY B-O.S.-1
 Marin County Records

BLK 5
 MARIN HEIGHTS SUB. " B " A-R.M.-99

Set 3/4" I.P. tagged
 L.S. 2897

Replaces orig. hub tagged
 RCE 11181

SUN AVENUE



SURVEYOR'S CERTIFICATE

THIS CORNER RECORD WAS PREPARED BY ME OR UNDER MY DIRECTION IN CONFORMANCE WITH THE LAND SURVEYORS ACT ON JUNE 6 1991

SIGNED: John A. Estes

L.S. or R.C.E. No.: L.S. 2897

SEAL

COUNTY SURVEYOR'S CERTIFICATE

THE CORNER RECORD WAS RECEIVED AND EXAMINED AND FILED

BY: _____

TITLE: _____

DOCUMENT No. _____

STATEMENT ON BACK OF SHEET

