



JERRICO ASSOCIATES
 SUITE 27
 77 MARK DRIVE
 SAN RAFAEL, CA 94903

A.P. # 50-141-05, 13

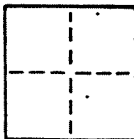
6816

see 6697

CORNER RECORD

1/6

COUNTY OF Marin T. _____ R. _____ MERIDIAN _____ CALIFORNIA
 CORNER TYPE: GOVT. CORNER MEANDER RANCHO CONTROL OTHER
 CORNER IDENTIFICATION — DATE OF VISIT _____ 19____



CORNER — LEFT AS FOUND FOUND AND TAGGED REESTABLISHED OBLITERATED CORNER REBUILT

PHYSICAL DESCRIPTION OF CORNER FOUND; EVIDENCE AND METHOD USED TO IDENTIFY OR REESTABLISH

Marin Heights Sub. C 4 R.M. 104 Lots 9,10,26,27 Block 3
 Also, LLA in 24 O.S. 15

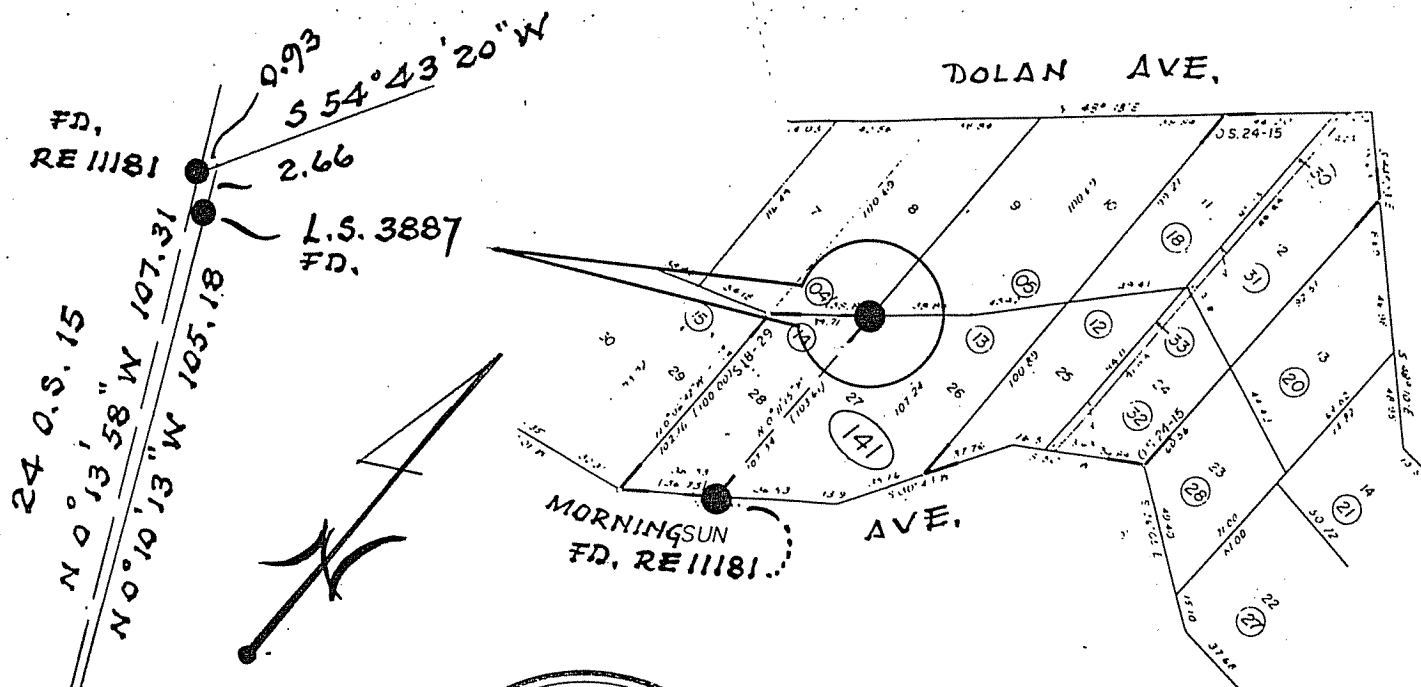
PHYSICAL DESCRIPTION OF MONUMENTS REBUILT OR PERPETUATED

Found R.E. 11181 per 24 O.S. 15 as related to L.S. 3887 as shown.

(Basis of this survey)

CALIFORNIA COORDINATE SYSTEM ORDER: FIRST SECOND THIRD
 STATIONS USED: NGS (USC & GS) STATE COUNTY OTHER STATION _____ STATION _____
 ZONE _____ ELEVATION _____ NORTHINGS (Y) _____ EASTINGS (X) _____

SKETCH: (Include reference tie or witness points, remarks and topo of area)



SURVEYOR'S CERTIFICATE
 THIS CORNER RECORD WAS PREPARED BY ME OR UNDER MY DIRECTION IN CONFORMANCE WITH THE LAND SURVEYORS ACT ON June 26 1988
 BY: Jerome Edward Brunner, Jr.
 No. 3337
 Exp. 6/30/92
 SEAL
 STATE OF CALIFORNIA

COUNTY SURVEYOR'S CERTIFICATE
 THE CORNER RECORD WAS RECEIVED AND EXAMINED AND FILED IN THE PUBLIC RECORDS OF THE COUNTY OF Marin ON June 26 1988
 BY: [Signature]
 TITLE: C 30212
 Exp. 2-31-88
 DOCUMENT No. _____
 STATEMENT ON BACK OF SHEET OF CALIFORNIA
 CIVIL ENGINEER
 STATE OF CALIFORNIA
 NO

RE 11181

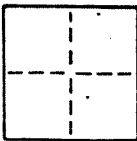
CORNER RECORD

2/6

COUNTY OF Marin T. _____ R. _____ MERIDIAN CALIFORNIA

CORNER TYPE: GOV'T. CORNER MEANDER RANCHO CONTROL OTHER

CORNER IDENTIFICATION — DATE OF VISIT _____ 19____



CORNER — LEFT AS FOUND FOUND AND TAGGED REESTABLISHED OBLITERATED CORNER REBUILT

PHYSICAL DESCRIPTION OF CORNER FOUND; EVIDENCE AND METHOD USED TO IDENTIFY OR REESTABLISH

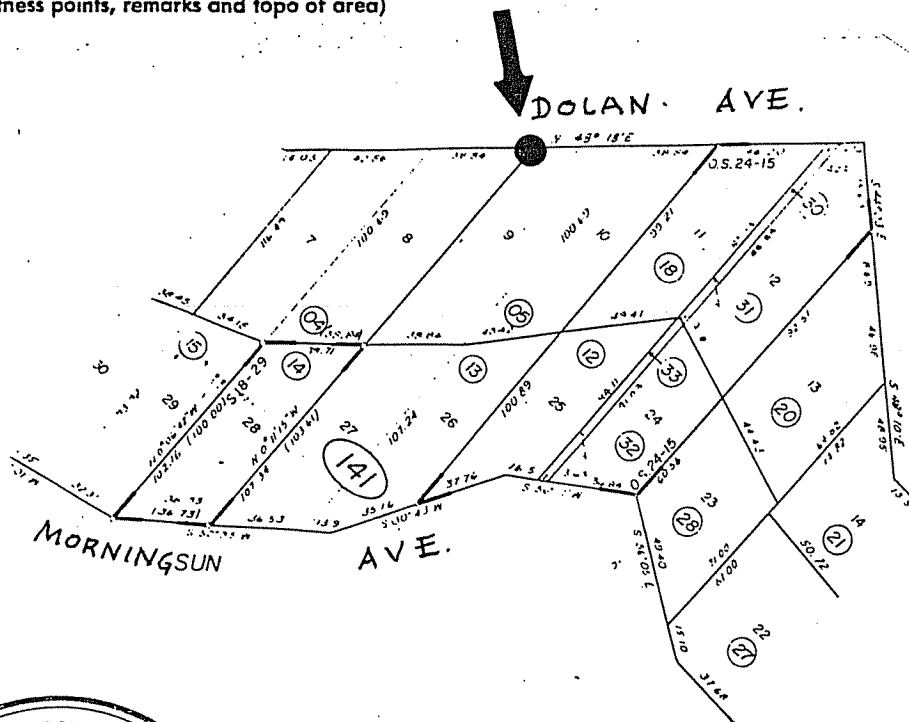
Marin Heights Sub. C 4 R.M. 104 Lots 9,10,26,27 Block 3
Also, LLA in 24 O.S. 15

PHYSICAL DESCRIPTION OF MONUMENTS REBUILT OR PERPETUATED

Set rebar and cap L.S. 3887

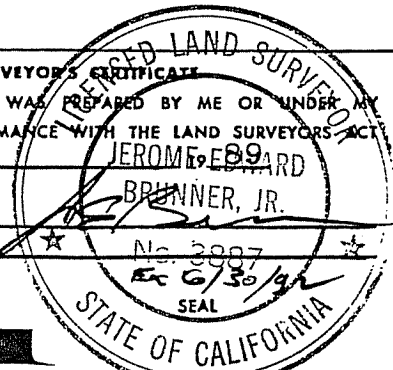
CALIFORNIA COORDINATE SYSTEM ORDER: FIRST SECOND THIRD
STATIONS USED: NGS (USC & GS) STATE COUNTY OTHER STATION _____ STATION _____
ZONE _____ ELEVATION _____ NORTHINGS (Y) _____ EASTINGS (X) _____

SKETCH: (Include reference tie or witness points, remarks and topo of area)

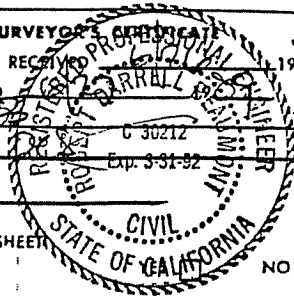


SURVEYOR'S CERTIFICATE
THIS CORNER RECORD WAS PREPARED BY ME OR UNDER MY DIRECTION IN CONFORMANCE WITH THE LAND SURVEYORS ACT ON June 26

SIGNED: _____
L.S. or R.C.E. No.: _____



COUNTY SURVEYOR'S CERTIFICATE
THE CORNER RECORD WAS RECEIVED AND EXAMINED AND FILED BY: _____ TITLE: _____ DOCUMENT No. _____ STATEMENT ON BACK OF SHEET _____





SUITE 27
77 MARK DRIVE
SAN RAFAEL, CA 94903

50-141-05, 13 6816

see 6697

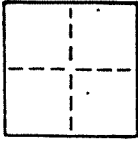
CORNER RECORD

3/6

COUNTY OF Marin T. _____ R. _____ MERIDIAN _____ CALIFORNIA

CORNER TYPE: GOV'T. CORNER MEANDER RANCHO CONTROL OTHER

CORNER IDENTIFICATION — DATE OF VISIT _____ 19____



CORNER — LEFT AS FOUND FOUND AND TAGGED REESTABLISHED OBLITERATED CORNER REBUILT

PHYSICAL DESCRIPTION OF CORNER FOUND; EVIDENCE AND METHOD USED TO IDENTIFY OR REESTABLISH

Marin Heights Sub. C 4 R.M. 104 Lots 9,10,26,27 Block 3
Also, LLA in 24 O.S. 15

PHYSICAL DESCRIPTION OF MONUMENTS REBUILT OR PERPETUATED

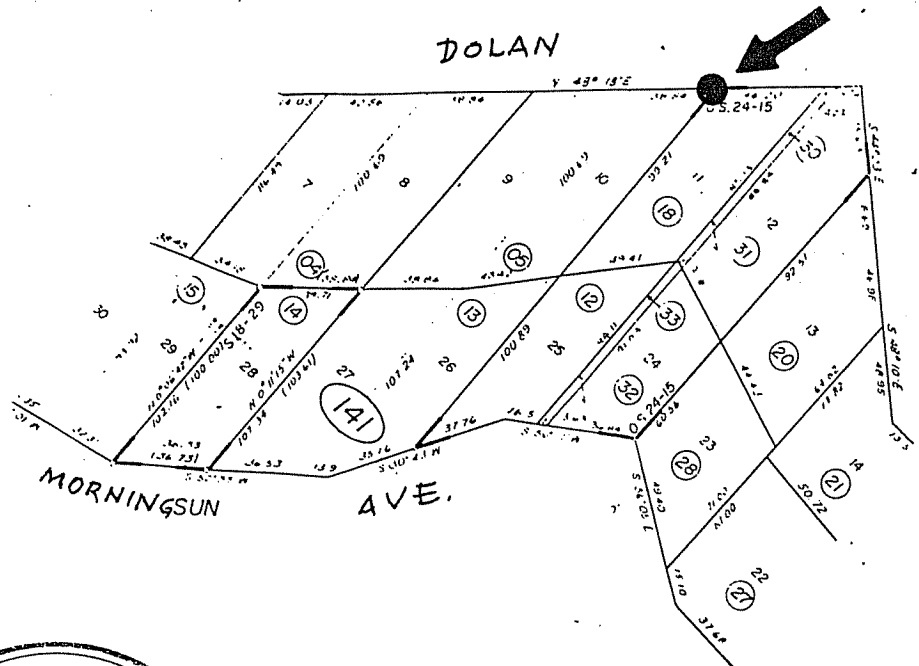
Fd. RE 18200 3/4" cap

CALIFORNIA COORDINATE SYSTEM ORDER: FIRST SECOND THIRD

STATIONS USED: NGS (USC & GS) STATE COUNTY OTHER STATION _____ STATION _____

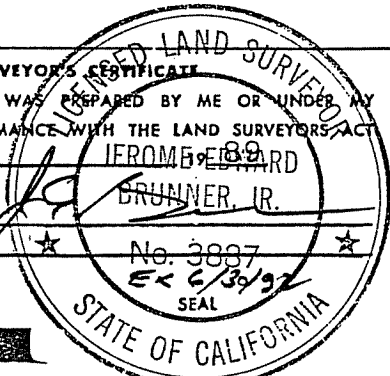
ZONE _____ ELEVATION _____ NORTHINGS (Y) _____ EASTINGS (X) _____

SKETCH: (Include reference tie or witness points, remarks and topo of area)



SURVEYOR'S CERTIFICATE
THIS CORNER RECORD WAS PREPARED BY ME OR UNDER MY DIRECTION IN CONFORMANCE WITH THE LAND SURVEYORS ACT ON June 26

SIGNED: _____
L.S. or R.C.E. No. _____

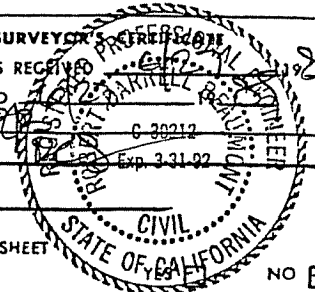


COUNTY SURVEYOR'S CERTIFICATION
THE CORNER RECORD WAS RECEIVED AND EXAMINED AND FILED

BY: _____ TITLE: _____

DOCUMENT No. _____

STATEMENT ON BACK OF SHEET _____





ENGINEERING ASSOCIATES
 SUITE 27
 77 MARK DRIVE
 SAN RAFAEL, CA 94903

50-141-05,13

6816

see 6697

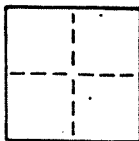
CORNER RECORD

4/6

COUNTY OF Marin T. _____ R. _____ MERIDIAN _____ CALIFORNIA

CORNER TYPE: GOV'T. CORNER MEANDER RANCHO CONTROL OTHER

CORNER IDENTIFICATION — DATE OF VISIT _____ 19____



CORNER — LEFT AS FOUND FOUND AND TAGGED REESTABLISHED OBLITERATED CORNER REBUILT

PHYSICAL DESCRIPTION OF CORNER FOUND; EVIDENCE AND METHOD USED TO IDENTIFY OR REESTABLISH

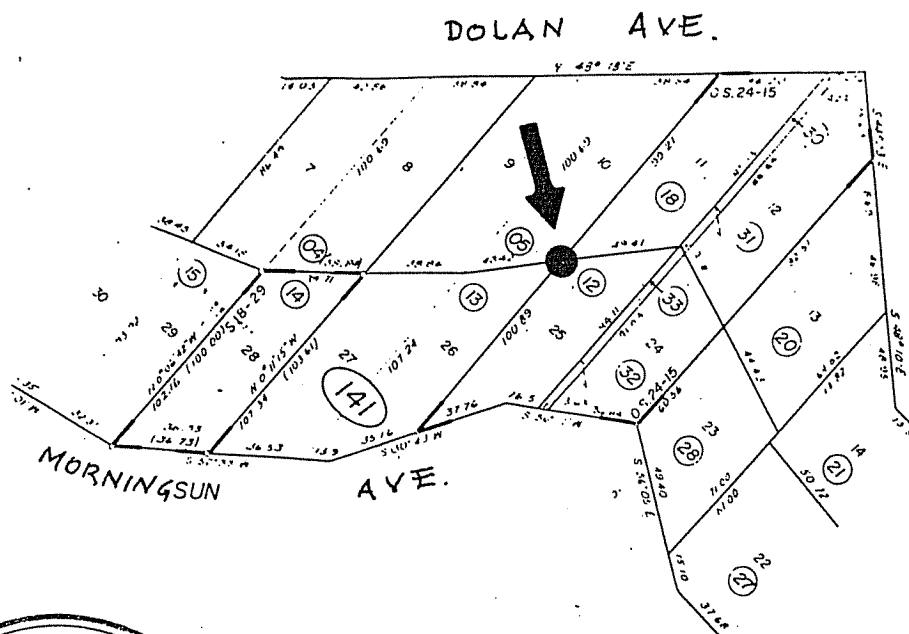
Marin Heights Sub. C 4 R.M. 104 Lots 9,10,26,27 Block 3
 Also, LLA in 24 O.S. 15

PHYSICAL DESCRIPTION OF MONUMENTS REBUILT OR PERPETUATED

Set rebar and cap L.S. 3887

CALIFORNIA COORDINATE SYSTEM ORDER: FIRST SECOND THIRD
 STATIONS USED: NGS (USC & GS) STATE COUNTY OTHER STATION _____ STATION _____
 ZONE _____ ELEVATION _____ NORTHINGS (Y) _____ EASTINGS (X) _____

SKETCH: (Include reference tie or witness points, remarks and topo of area)



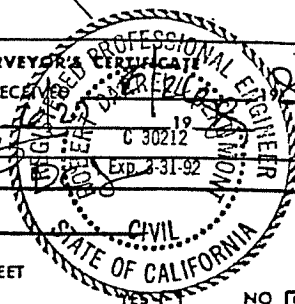
SURVEYOR'S CERTIFICATE
 THIS CORNER RECORD WAS PREPARED BY ME OR UNDER MY DIRECTION IN CONFORMANCE WITH THE LAND SURVEYORS ACT ON June 26 1988

SIGNED: _____
 L.S. or R.C.E. No.: _____



COUNTY SURVEYOR'S CERTIFICATE
 THE CORNER RECORD WAS RECEIVED AND EXAMINED AND FILED BY: _____ TITLE: _____

DOCUMENT No. _____
 STATEMENT ON BACK OF SHEET



NO



SUITE 27
77 MARK DRIVE
SAN RAFAEL, CA 94903

50-141-05, 13 6816

see 6697

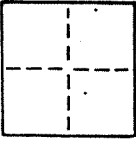
CORNER RECORD

5/6

COUNTY OF Marin T. _____ R. _____ MERIDIAN CALIFORNIA

CORNER TYPE: GOV'T. CORNER MEANDER RANCHO CONTROL OTHER

CORNER IDENTIFICATION — DATE OF VISIT _____ 19____



CORNER — LEFT AS FOUND FOUND AND TAGGED REESTABLISHED OBLITERATED CORNER REBUILT

PHYSICAL DESCRIPTION OF CORNER FOUND; EVIDENCE AND METHOD USED TO IDENTIFY OR REESTABLISH

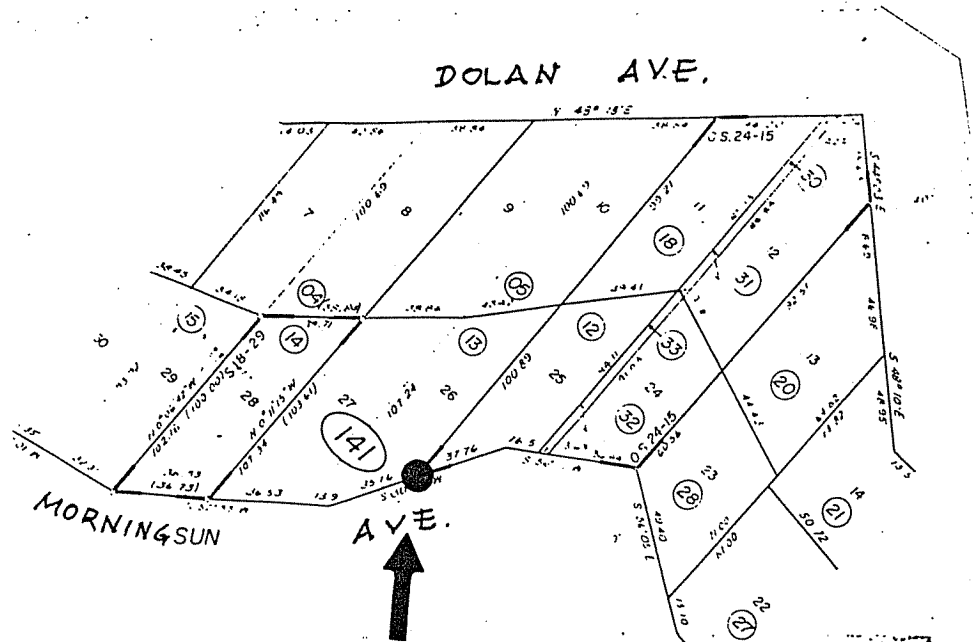
Marin Heights Sub. C 4 R.M. 104 Lots 9,10,26,27 Block 3
Also, LLA in 24 O.S. 15

PHYSICAL DESCRIPTION OF MONUMENTS REBUILT OR PERPETUATED

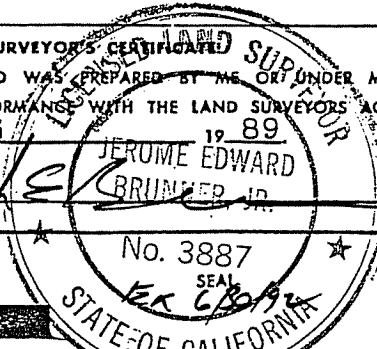
Fd. RE 18200 1/2" cap

CALIFORNIA COORDINATE SYSTEM ORDER: FIRST SECOND THIRD
STATIONS USED: NGS (USC & GS) STATE COUNTY OTHER STATION _____ STATION _____
ZONE _____ ELEVATION _____ NORTHINGS (Y) _____ EASTINGS (X) _____

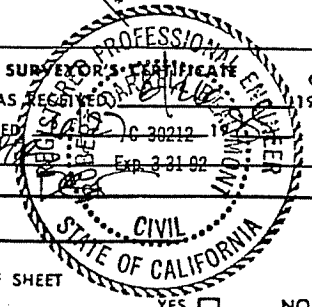
SKETCH: (Include reference tie or witness points, remarks and topo of area)



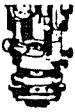
SURVEYOR'S CERTIFICATE
THIS CORNER RECORD WAS PREPARED BY ME OR UNDER MY DIRECTION IN CONFORMANCE WITH THE LAND SURVEYORS ACT ON June 26 1989
SIGNED: JEROME EDWARD BRUNNER JR.
L.S. or R.C.E. No.: _____



COUNTY SURVEYOR'S CERTIFICATE
THE CORNER RECORD WAS RECEIVED AND EXAMINED AND FILED BY: _____
TITLE: _____
DOCUMENT No. _____



STATEMENT ON BACK OF SHEET YES NO



SURVEYING ASSOCIATES
 SUITE 27
 77 MARK DRIVE
 SAN RAFAEL, CA 94903

50-141-05, 13

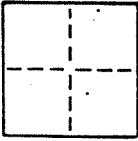
6816

see 6697

CORNER RECORD

6/6

COUNTY OF Marin T. _____ R. _____ MERIDIAN _____ CALIFORNIA
 CORNER TYPE: GOV'T. CORNER MEANDER RANCHO CONTROL OTHER
 CORNER IDENTIFICATION — DATE OF VISIT _____ 19____



CORNER — LEFT AS FOUND FOUND AND TAGGED REESTABLISHED OBLITERATED CORNER REBUILT

PHYSICAL DESCRIPTION OF CORNER FOUND; EVIDENCE AND METHOD USED TO IDENTIFY OR REESTABLISH

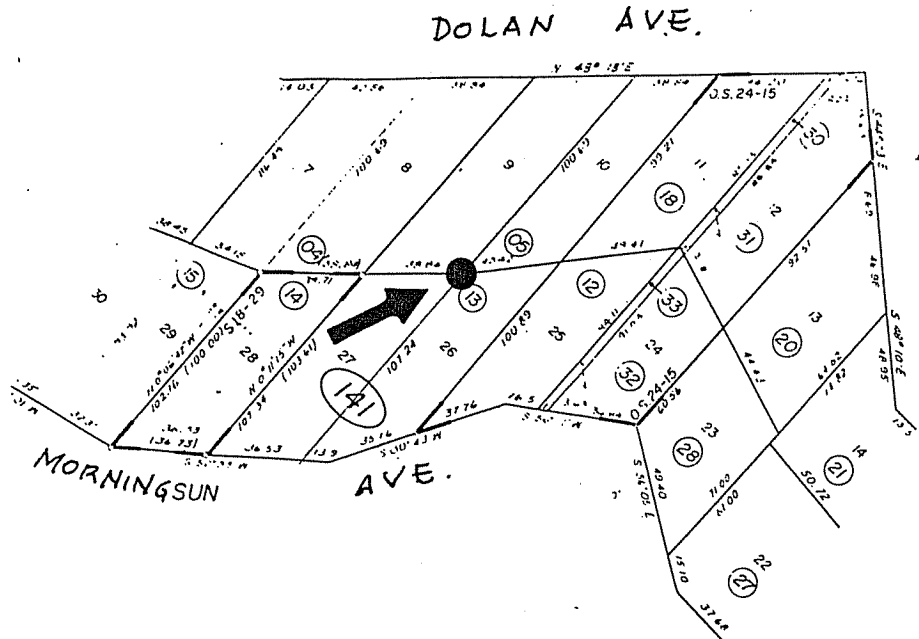
Marin Heights Sub. C 4 R.M. 104 Lots 9,10,26,27 Block 3
 Also, LLA in 24 O.S. 15

PHYSICAL DESCRIPTION OF MONUMENTS REBUILT OR PERPETUATED

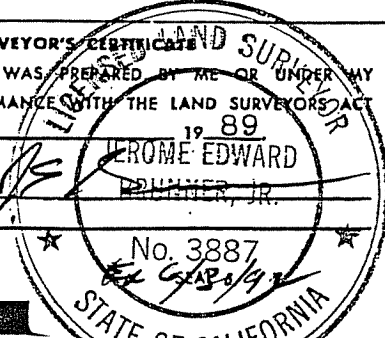
Set rebar and cap L.S. 3887

CALIFORNIA COORDINATE SYSTEM ORDER: FIRST SECOND THIRD
 STATIONS USED: NGS (USC & GS) STATE COUNTY OTHER STATION _____ STATION _____
 ZONE _____ ELEVATION _____ NORTHINGS (Y) _____ EASTINGS (X) _____

SKETCH: (Include reference tie or witness points, remarks and topo of area)



SURVEYOR'S CERTIFICATE
 THIS CORNER RECORD WAS PREPARED BY ME OR UNDER MY DIRECTION IN CONFORMANCE WITH THE LAND SURVEYORS ACT ON June 26 19 89
 SIGNED: Jerome Edward Dunner, Jr.
 L.S. or R.C.E. No.: _____



COUNTY SURVEYOR'S PROFESSIONAL SEAL
 THE CORNER RECORD WAS RECEIVED AND EXAMINED AND FILED _____ 19____
 BY: _____ C 30212
 TITLE: _____ Exp. 3-31-92
 DOCUMENT No. _____
 STATEMENT ON BACK OF SHEET _____
 YES NO

