

**CORNER RECORD**

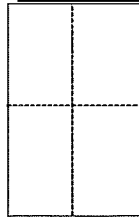
Document Number APN 050-121-09

City of Mill Valley

County of Marin, California

Brief Legal Description:

Lot 35 & 36 of Block 2 of "Marin Heights, Sub'd "C", 4 Maps 104, Marin County Records



**CORNER TYPE**

Government Corner  Control

Meaneder  Property

Rancho  Other

Date of Survey \_\_\_\_\_

**COORDINATES (Optional)**

N: \_\_\_\_\_

E: \_\_\_\_\_

Zone \_\_\_\_\_ NAD27  NAD83

Elev. \_\_\_\_\_

Vert. Datum: NGVD29  NAVD88

Meas. Units: Metric  Imperial

Corner - Left as found  Found and tagged  Established  Reestablished  Rebuilt

Identification and type of corner found: Evidence used to identify or procedure used to establish or reestablish the corner:

Found Monuments to be in good condition and record position per Record of Survey in Book 2002, at page 192, Marin County Records.

A description of the physical condition of the monument as found and as set or reset:

Found 1/2" Rebar, tagged RCE 11181, 6 O.S. 36, M.C.R.

Found 3/4" Iron Pipe, tagged RCE 30465, 2002 M 192, M.C.R.

Set (1) Brass Tag, LS 7237 and (3) 1/2" Iron Pipes, LS 7237 as shown on attached drawing.

**SURVEYOR'S STATEMENT**

This Corner Record was prepared by me or under my direction in conformance with the Land Surveyor's Act on Sept. 22nd 2016

Signed Michael E. Ford P.L.S. or R.C.E. No. 7237

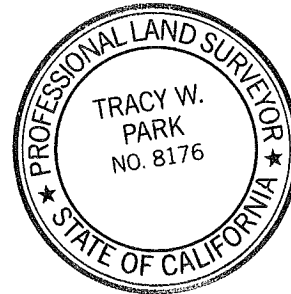


**COUNTY SURVEYOR'S STATEMENT**

This Corner Record was received SEPTEMBER 27, 2016

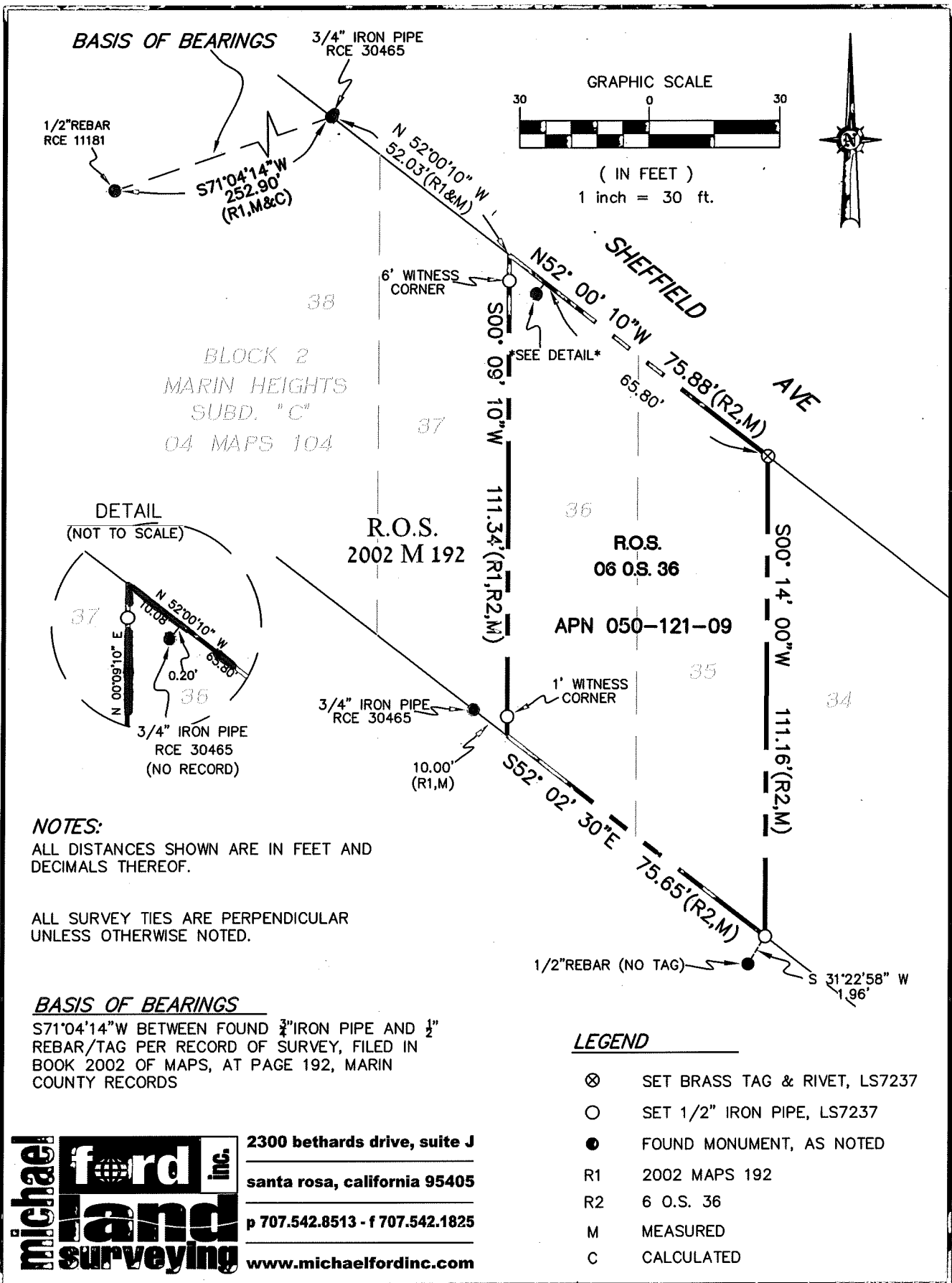
and examined and filed 1/18/2017  
Signed T. W. Park P.L.S. or R.C.E. No. 8176

Title COUNTY SURVEYOR



County Surveyor's Comment

\_\_\_\_\_  
\_\_\_\_\_  
\_\_\_\_\_



2300 bethards drive, suite J  
 santa rosa, california 95405  
 p 707.542.8513 - f 707.542.1825  
 www.michaelfordinc.com