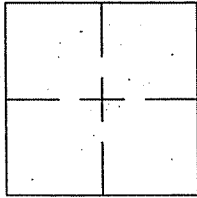


CORNER RECORD

Document Number APN 50-081-40

City of UNINCORPORATED AREA MILL VLY County of MARIN, California

Brief Legal Description PARCEL 2, BOOK 16 PM 11, MARIN COUNTY RECORDS



CORNER TYPE

Government Corner Control
Meander Property
Rancho Other
Date of Survey SEPTEMBER 23, 2010

COORDINATES (Optional)

N: _____
E: _____
Zone _____ NAD27 NAD83
NAD83 Epoch _____
Elev. _____
Vert. Datum: NGVD29 NAVD88
Meas. Units: Metric Imperial

Corner - Left as found Found and tagged Established Reestablished Rebuilt

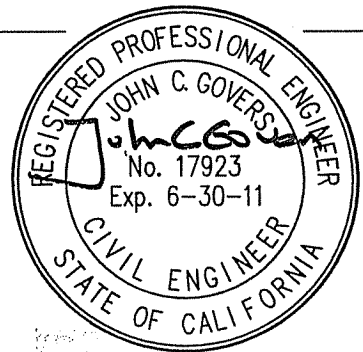
Identification and type of corner found: Evidence used to identify or procedure used to establish or reestablish the corner.
FOUND POINTS AS SHOWN ON REVERSE.

A description of the physical condition of the monument as found and as set or reset:
FOUND POINTS AS SHOWN ON REVERSE.

SURVEYOR'S STATEMENT

This Corner Record was prepared by me or under my direction in conformance with the Land Surveyors' Act on NOVEMBER 12, 2010

Signed _____ R.C.E. No. 17923



COUNTY SURVEYOR'S STATEMENT

This Corner Record was received NOVEMBER 16, 2010

and examined and filed DECEMBER 28, 2010

Signed [Signature] P.L.S. or R.C.E. No. 7128

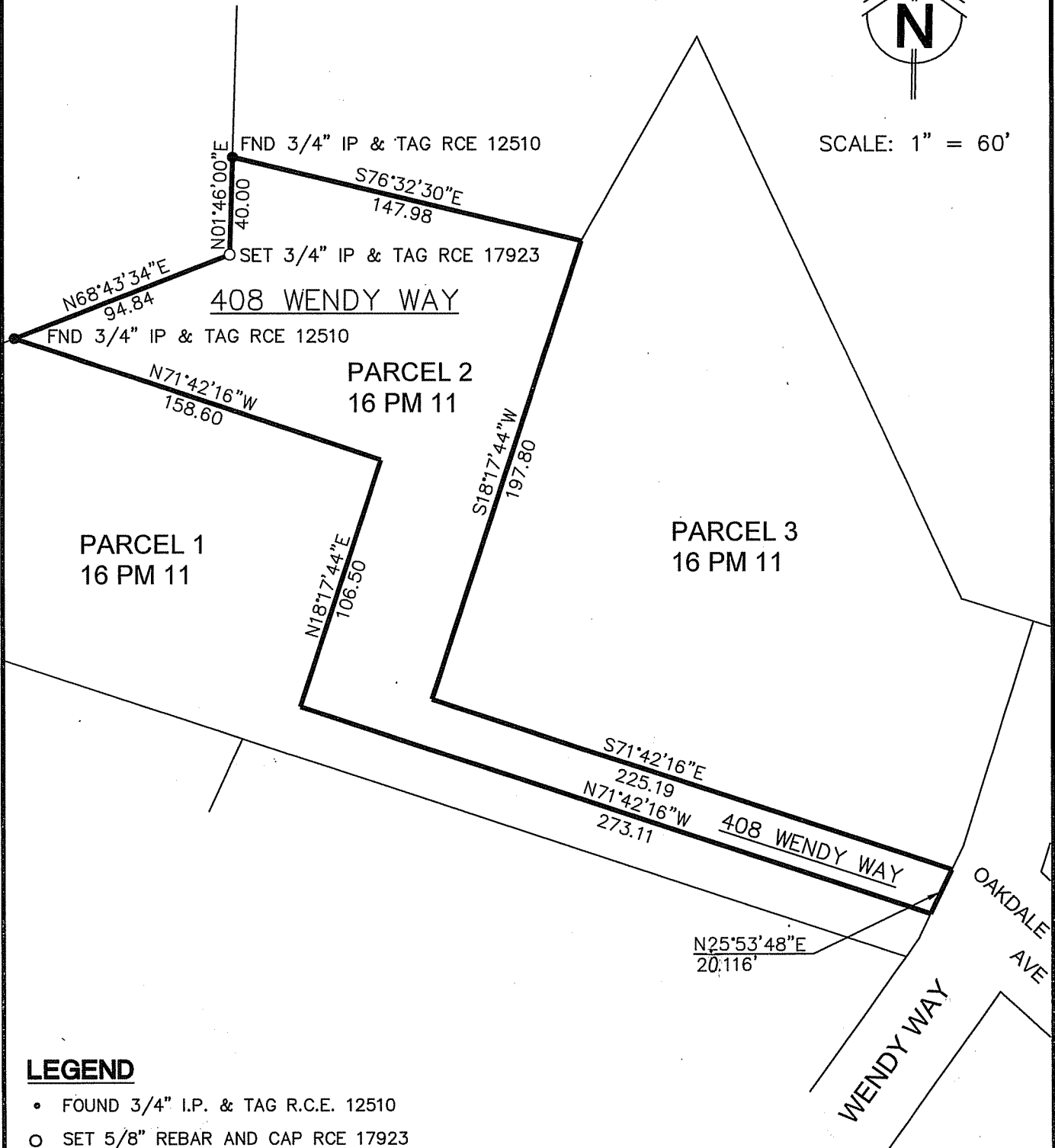
Title COUNTY SURVEYOR



County Surveyor's Comment _____



SCALE: 1" = 60'



LEGEND

- FOUND 3/4" I.P. & TAG R.C.E. 12510
- SET 5/8" REBAR AND CAP RCE 17923