

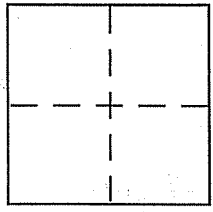
**CORNER RECORD**

City of Mill Valley

Document Number 050-061-52

County of Marin, California

Brief Legal Description Lot B, 18 Maps 25



**CORNER TYPE**

Government Corner  Control   
Meander  Property   
Rancho  Other   
Date of Survey 04/06/06

**COORDINATES (Optional)**

N. \_\_\_\_\_  
E. \_\_\_\_\_  
Zone \_\_\_\_\_ NAD27  NAD83   
NAD83 Epoch \_\_\_\_\_  
Elev. \_\_\_\_\_  
Vert. Datum: NGVD29  NAVD88   
Meas. Units: Metric  Imperial

Corner - Left as found  Found and tagged  Established  Reestablished  Rebuilt

Identification and type of corner found: Evidence used to identify or procedure used to establish or reestablish the corner:  
See page 2 of 2

A description of the physical condition of the monument as found and as set or reset:  
See page 2 of 2

**SURVEYOR'S STATEMENT**

This Corner Record was prepared by me or under my direction in conformance with the Land Surveyor's Act on 5/15/06

Signed [Signature] P.L.S or R.C.E. No. 6784

**COUNTY SURVEYOR'S STATEMENT**

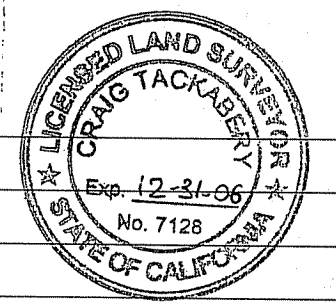
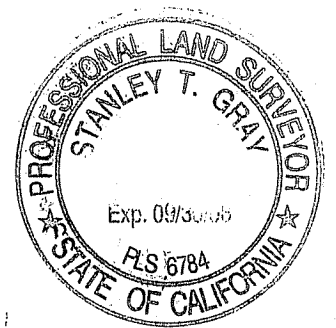
This Corner Record was received MAY 30, 2006

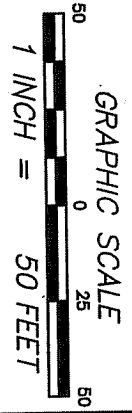
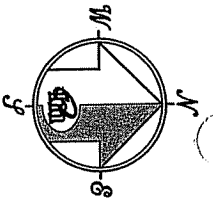
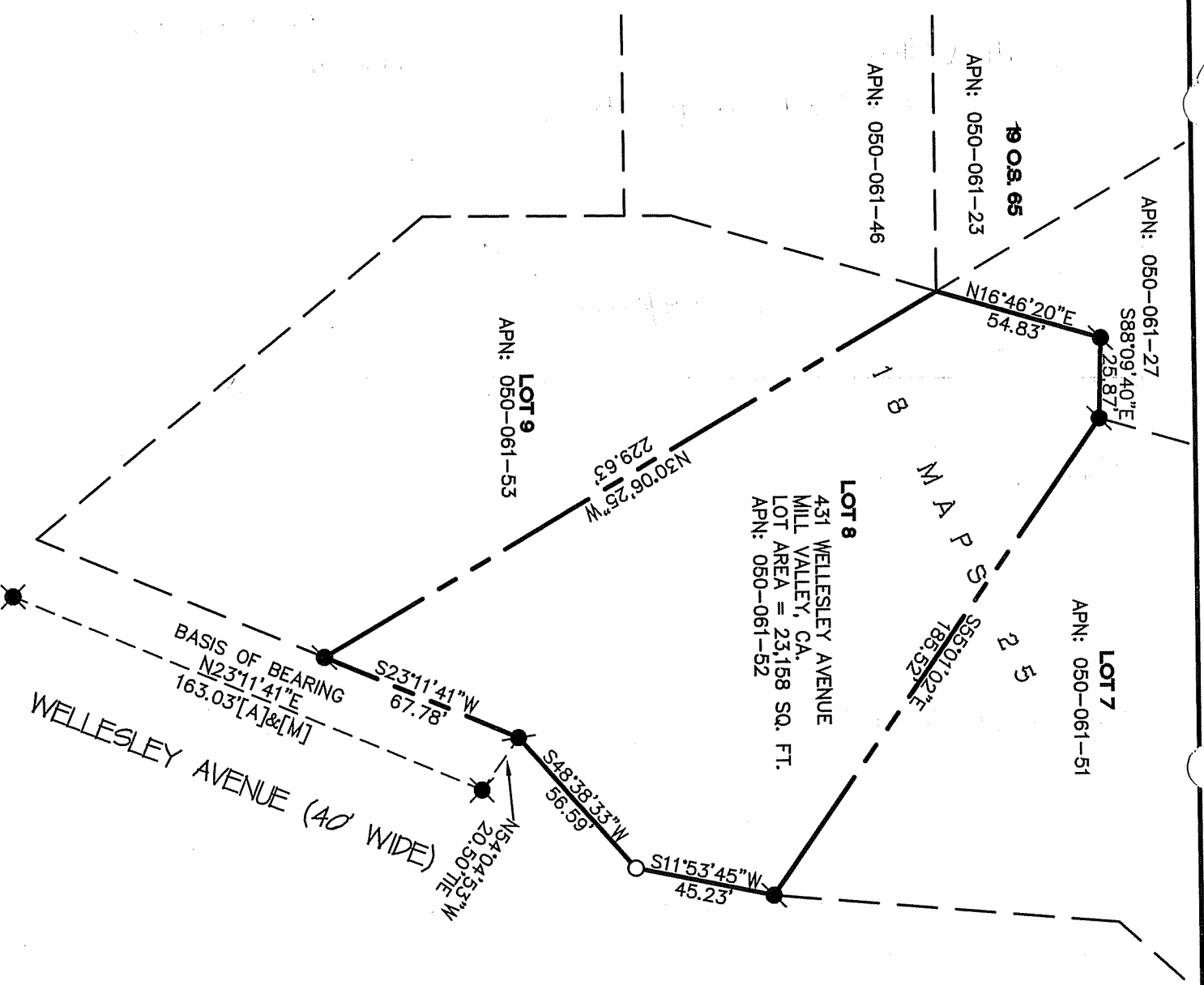
and examined and filed JUNE 14, 2006

Signed [Signature] P.L.S or R.C.E. No. 7128

Title COUNTY SURVEYOR

County Surveyor's Comment \_\_\_\_\_





**REFERENCE**

MAP OF "WELLESLEY AVENUE  
 SUBDIVISION" FILED SEPTEMBER, 16  
 1980 IN BOOK 18 OF MAPS AT PAGE  
 25, MARIN COUNTY RECORDS [A]

**LEGEND**

- FOUND CITY MONUMENT PER [A]
- FOUND 3/4 I.P. WITH TAG RCE. 18221 PER [A]
- SET NAIL AND TAG L.S. 6784

NOTE  
 RECORD=MEASURED

CORNER RECORD

**MERIDIAN SURVEYING**  
 ENGINEERING, INC.  
 1812 UNION STREET  
 SAN FRANCISCO, CA 94123  
 (415) 440-4131  
 info@meridiansurveying.com  
 777 GRAND AVENUE, SUITE 202  
 SAN RAFAEL, CA 94901  
 (415) 456-6460