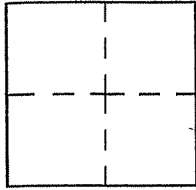


CORNER RECORD

Document number A.P.N. 050-031-14

City of MILL VALLEY County of MARIN, California

Brief Legal Description LOT 5 AS SHOWN UPON 19 R.M. 75, MARIN COUNTY RECORDS



CORNER TYPE

Government Corner Control
Meander Property
Rancho Other
Date of Survey _____

COORDINATES

N. _____
E. _____
Zone _____ Datum _____
Elev. _____

Corner--- Left as found found and tagged Established Reestablished Rebuilt

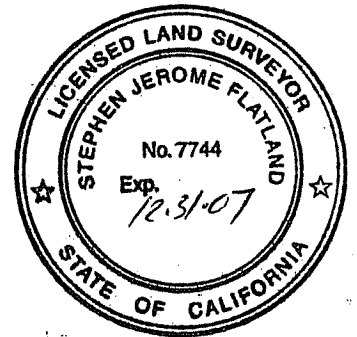
Identification and type of corner found: Evidence used to identify or procedure used to establish or reestablish the corner:
UTILIZED MONUMENTS AS SHOWN UPON 19 R.M. 75 AS A BASIS OF BEARINGS
TO MONUMENT THE EASTERLY LINE OF LOT 5.

A. description of the physical condition of the monument as found and as set or reset.
MONUMENTS FOUND PER 19 R.M. 75 AND UTILIZED AS A BASIS OF BEARINGS
WERE UNDISTURBED.
MONUMENTS SET WERE 1/2" REBAR WITH PLASTIC CAP, PLS 7744

SURVEYOR'S STATEMENT

This Corner Record was prepared by me or under my direction in conformance with
the Land Surveyor's Act on March 16 2006.

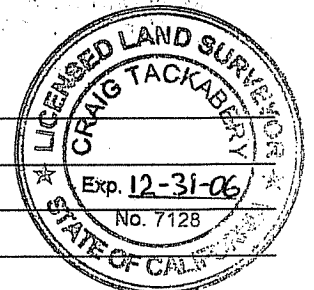
Signed [Signature] L.S. Number 7744



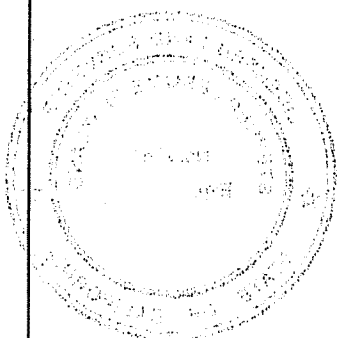
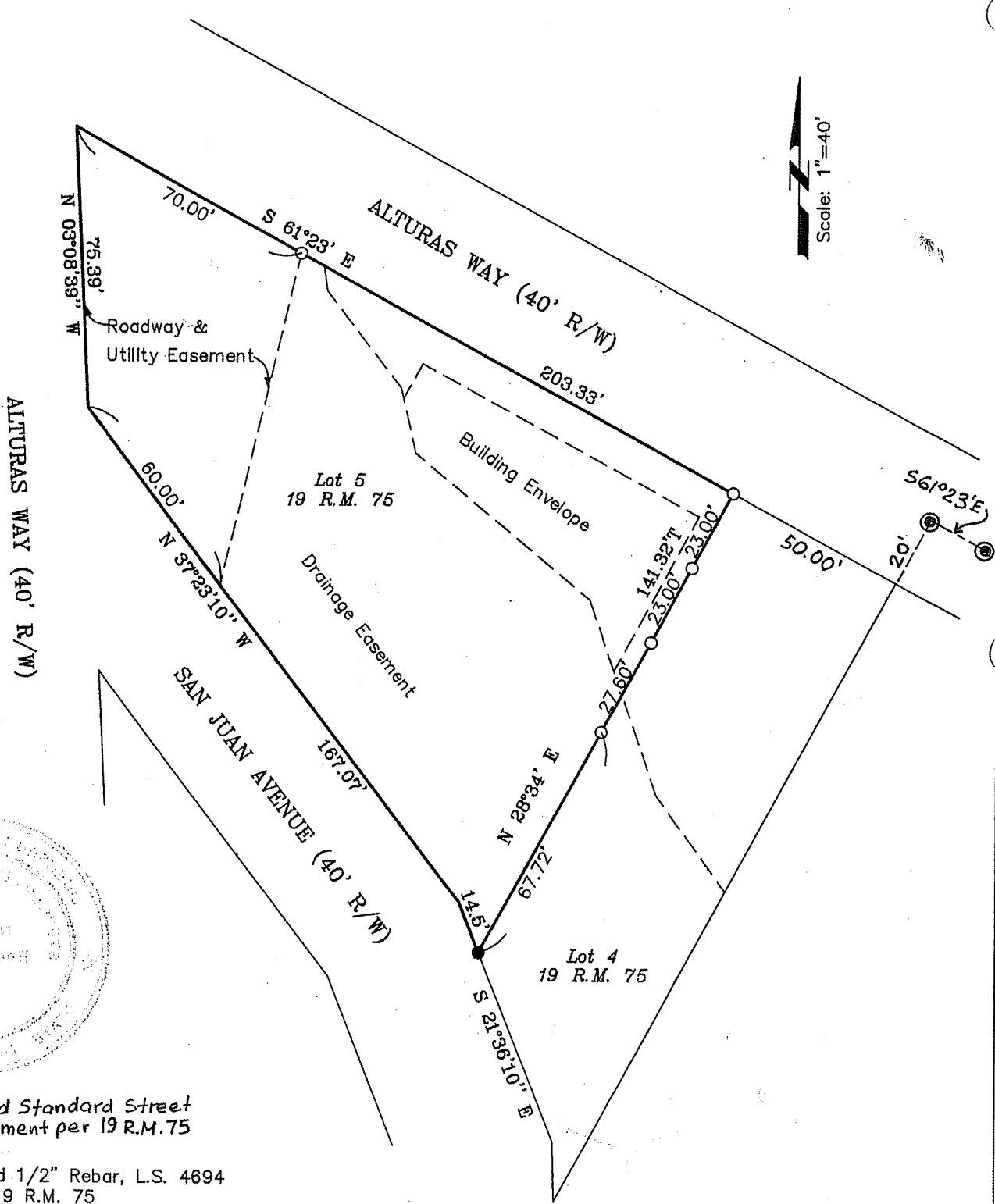
COUNTY SURVEYOR'S STATEMENT

This Corner Record was received MARCH 22, 2006 and examined
and filed APRIL 25, 2006

Signed [Signature] Title COUNTY SURVEYOR



County Surveyor's Comment _____



- ⊙ Found Standard Street Monument per 19 R.M. 75
- Found 1/2" Rebar, L.S. 4694 Per 19 R.M. 75
- Set 1/2" Rebar & Cap, L.S. 7744