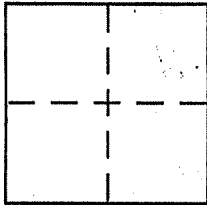


**CORNER RECORD**

Document Number AP#50-031-12  
County of Marin, California

City of Mill Valley

Brief Legal Description Lot 3 of 19 RM 75



**CORNER TYPE**

Government Corner  Control   
Meander  Property   
Rancho  Other   
Date of Survey \_\_\_\_\_

**COORDINATES (Optional)**

N. \_\_\_\_\_  
E. \_\_\_\_\_  
Zone \_\_\_\_\_ NAD27  NAD83   
NAD83 Epoch \_\_\_\_\_  
Elev. \_\_\_\_\_  
Vert. Datum: NGVD29  NAVD88   
Meas. Units: Metric  Imperial

Corner - Left as found  Found and tagged  Established  Reestablished  Rebuilt

Identification and type of corner found: Evidence used to identify or procedure used to establish or reestablish the corner:

Found original street monuments and property corners of 19 RM 75, and found reset corners of the Parcel Map 18 RM 77 documented by the Corner Record of Michael Brogan dated 11/30/96.

A description of the physical condition of the monument as found and as set or reset:

Found undisturbed street monuments and corner markers tagged LS 4694 (19 RM 75 & 18 RM 77), and reset corners marked LS 5767 (see sketch map). Set 1/2 rebar & cap LS 5290 as noted on "Sketch Map".

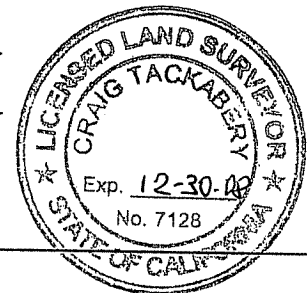
**SURVEYOR'S STATEMENT**

This Corner Record was prepared by me or under my direction in conformance with the Land Surveyor's Act on May 2nd 2007  
Signed David Harp P.L.S or R.C.E. No. LS 5290

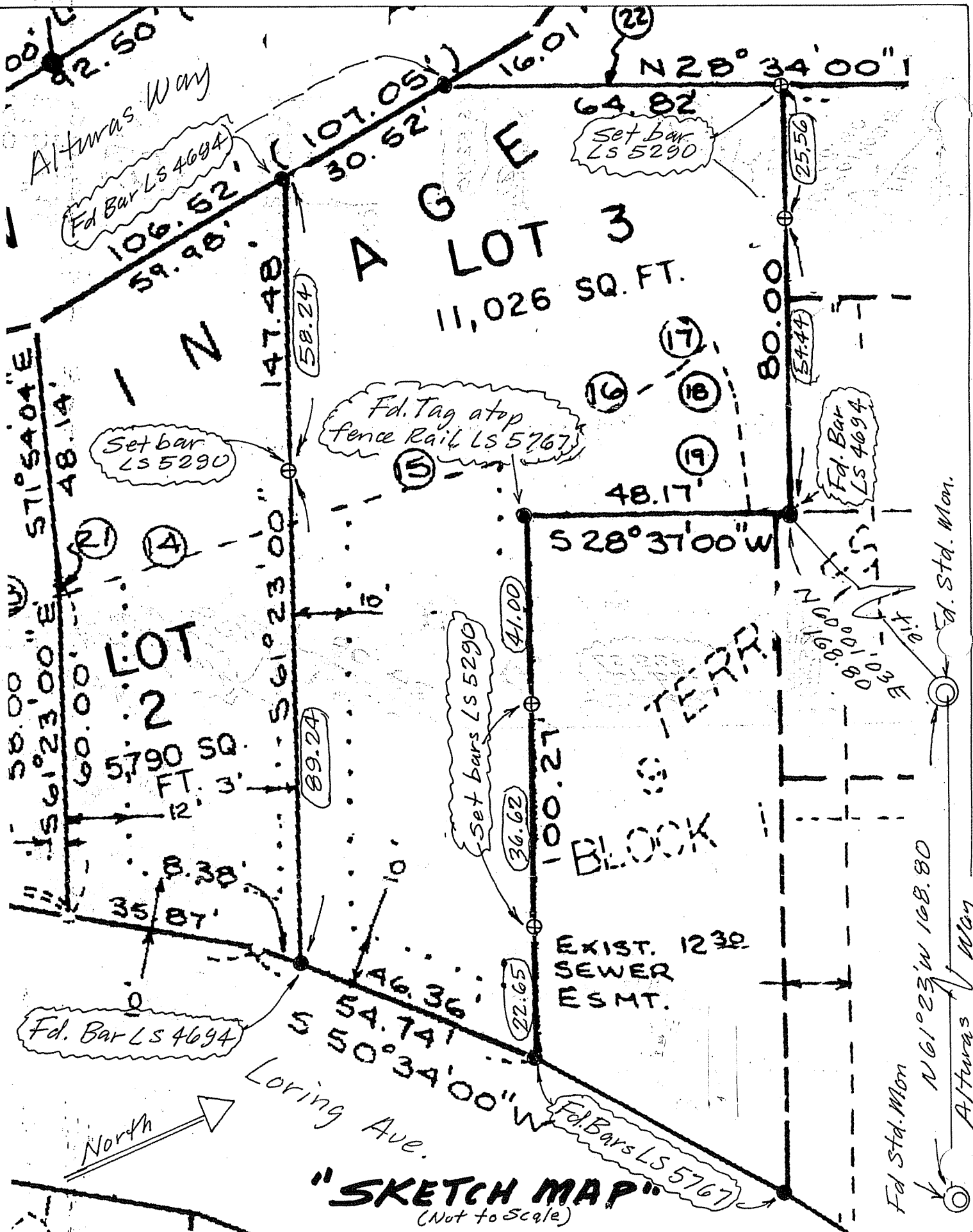


**COUNTY SURVEYOR'S STATEMENT**

This Corner Record was received MAY 7, 2007  
and examined and filed JUNE 13, 2007  
Signed \_\_\_\_\_ P.L.S or R.C.E. No. 7128  
Title COUNTY SURVEYOR

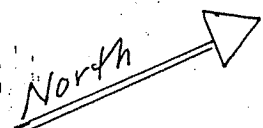


County Surveyor's Comment \_\_\_\_\_



**"SKETCH MAP"**  
(Not to Scale)

Notes: ○ Indicates line point distance  
⊕ Indicates set point as noted



Fd. Std. Mon. Altwas Way  
 Fd. Std. Mon. Loring Ave.