

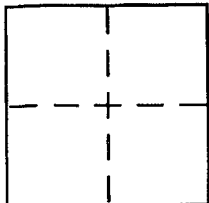
**CORNER RECORD**

Document Number APN 050-026-23

City of MILL VALLEY

County of MARIN, California

Brief Legal Description Lot 14, Block 302, Portion Lot 13, SRM 29, 24 O.S. 82



**CORNER TYPE**

Government Corner  Control   
Meander  Property   
Rancho  Other   
Date of Survey 10-28-04

**COORDINATES (Optional)**

N. \_\_\_\_\_  
E. \_\_\_\_\_  
Zone \_\_\_\_\_ NAD27  NAD83   
NAD83 Epoch \_\_\_\_\_  
Elev. \_\_\_\_\_  
Vert. Datum: NGVD29  NAVD88   
Meas. Units: Metric  Imperial

Corner - Left as found  Found and tagged  Established  Reestablished  Rebuilt

Identification and type of corner found: Evidence used to identify or procedure used to establish or reestablish the corner:

See Page 2 of 2

A description of the physical condition of the monument as found and as set or reset:

See Page 2 of 2

**SURVEYOR'S STATEMENT**

This Corner Record was prepared by me or under my direction in conformance with the Land Surveyor's Act on 11/18/04

Signed [Signature] P.L.S or R.C.E. No. 6784

**COUNTY SURVEYOR'S STATEMENT**

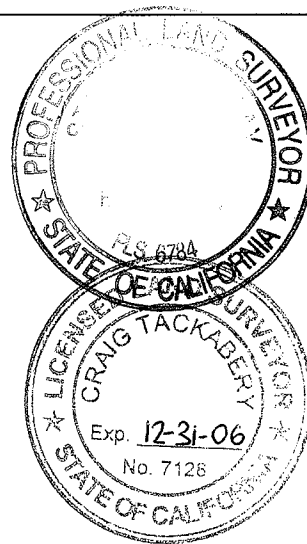
This Corner Record was received NOVEMBER 9, 2004

and examined and filed NOVEMBER 29, 2004

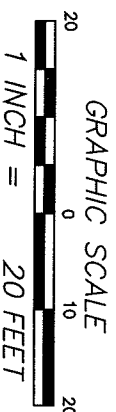
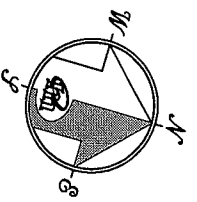
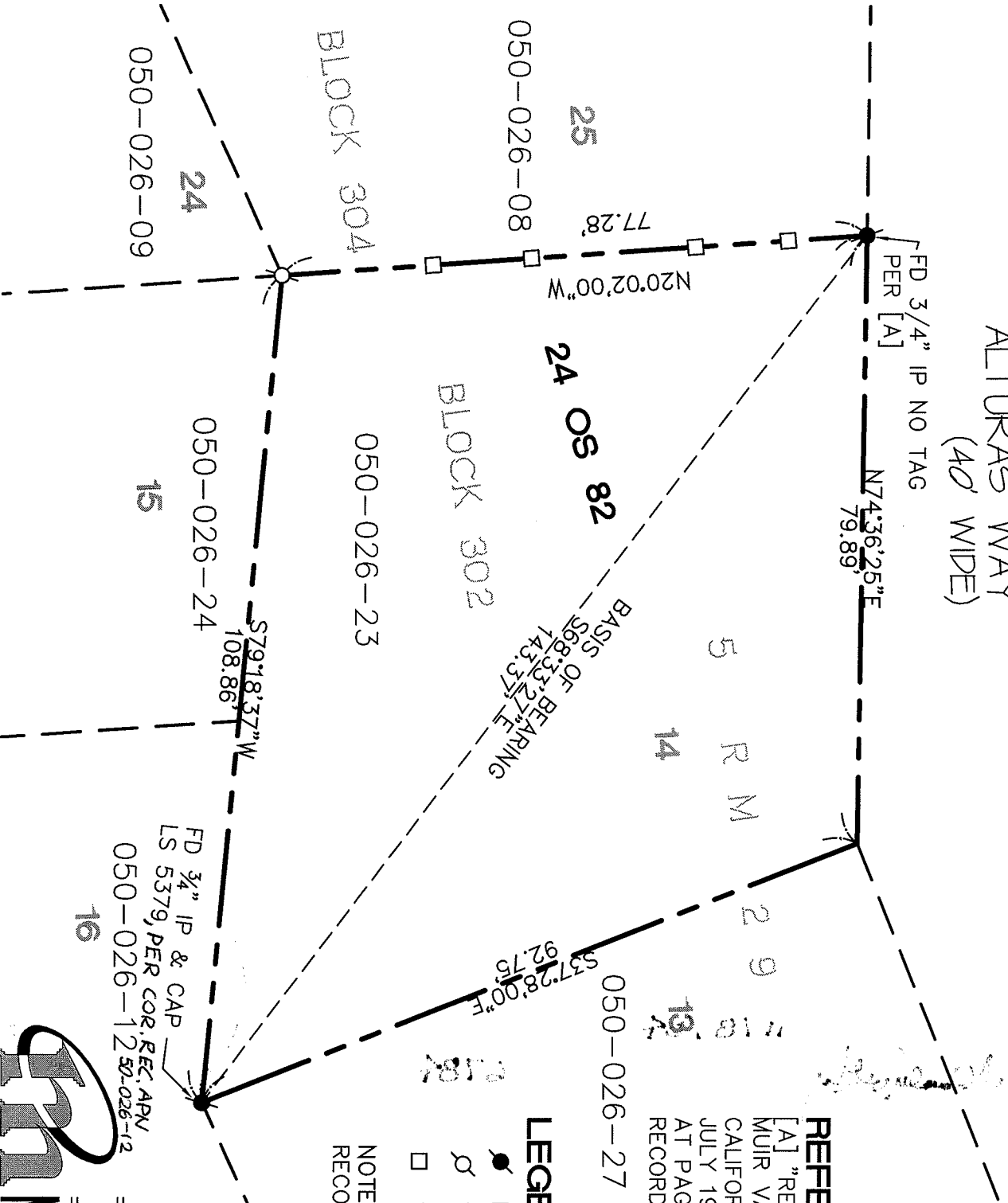
Signed [Signature] P.L.S or R.C.E. No. 7128

Title COUNTY SURVEYOR

County Surveyor's Comment \_\_\_\_\_



ALTURAS WAY  
(40' WIDE)



**REFERENCE**

[A] "RECORD OF SURVEY, LANDS OF MUIR VALLEY LAND CO, MILL VALLEY, CALIFORNIA" FILED FOR RECORD 28 JULY 1988 IN BOOK 24 OF SURVEYS, AT PAGE 82, MARIN COUNTY RECORDS.

**LEGEND**

- FOUND AS NOTED
  - SET REBAR & CAP LS 6784
  - SET 2x2 HUB & TACK WITH BRASS TAG, PLS 6784
- NOTE  
RECORD=MEASURED

CORNER RECORD

**MERIDIAN SURVEYING**  
ENGINEERING, INC.

1812 UNION STREET  
SAN FRANCISCO, CA 94123  
(415) 440-4131  
info@meridiansurvey.com

777 GRAND AVENUE, SUITE 202  
SAN RAFAEL, CA 94901  
(415) 456-6480

050-026-08  
050-026-09  
050-026-24  
050-026-23  
050-026-24  
050-026-12

BLOCK 304  
BLOCK 302  
24 OS 82  
24 OS 27

N20°02'00"W  
77.28'  
N74°36'25"E  
79.89'  
S79°18'37"W  
108.86'  
S37°28'00"E  
92.75'  
S57°28'00"E  
92.75'

FD 3/4" IP NO TAG  
PER [A]  
FD 3/4" IP & CAP  
LS 5379, PER COR. REC. APV  
16