

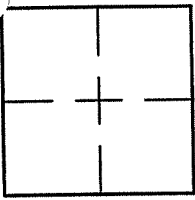
CORNER RECORD

Document Number A.P. 50-024-01

City of MILL VALLEY

County of MARIN, California

Brief Legal Description LOTS 5 AND 6 PER 5 R.M. 29



CORNER TYPE

COORDINATES (Optional)

Government Corner Control

Meander Property

Rancho Other

Date of Survey 4/23/08

N. _____
 E. _____
 Zone _____ NAD27 NAD83
 NAD83 Epoch _____
 Elev. _____
 Vert. Datum: NGVD29 NAVD88
 Meas. Units: Metric Imperial

Corner- Left as found Found and tagged Established Reestablished Rebuilt

Identification and type of corner found: Evidence used to identify or procedure used to establish or reestablish the corner:
REESTABLISHED THE EASTERLY LINE OF LOT 6 BY USING 16 O.S. 41 AND THE MONUMENTS AS SHOWN ON
19 O.S. 49 AND AS SHOWN ON SHEET 2.

A description of the physical condition of the monument as found and as set or reset: SEE SHEET 2.

SURVEYOR'S STATEMENT

This Corner Record was prepared by me or under my direction in conformance with

the Land Surveyor's Act on APRIL 24, 2008

Signed Lawrence P Doyle P.L.S. or R.C.E. No. P.L.S. 4694



COUNTY SURVEYOR'S STATEMENT

This Corner Record was received MAY 5, 2008

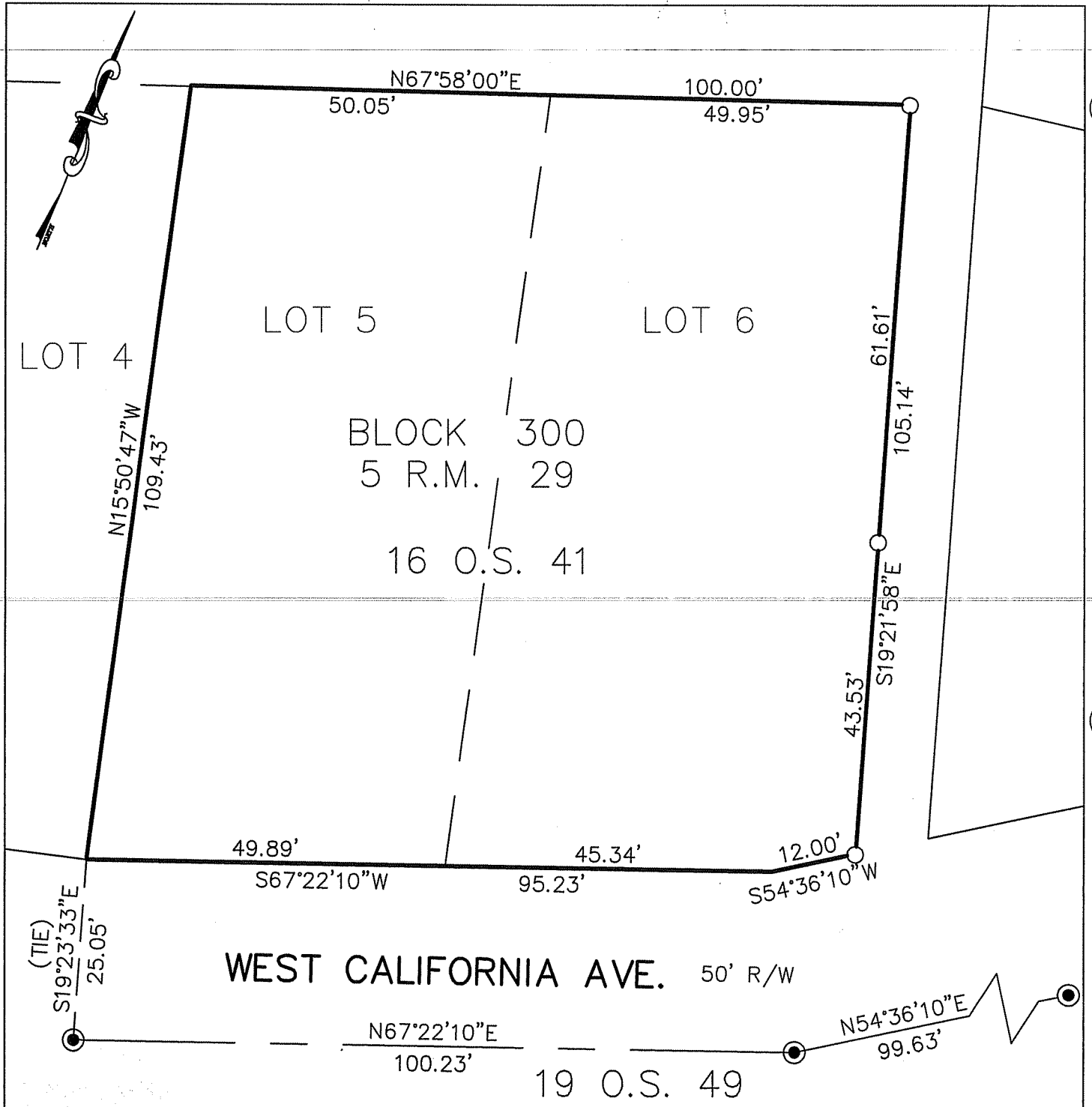
and examined and filed JUNE 2, 2008

Signed [Signature] P.L.S. or R.C.E. No. 7128

Title COUNTY SURVEYOR

County Surveyor's Comment _____





BASIS OF BEARING

THE BASIS OF BEARING IS BETWEEN FOUND STREET MONUMENTS IN WEST CALIFORNIA AVE. PER 19 O.S. 49.

LEGEND

- FOUND STREET MONUMENT
- SET 3/4" PIPE & PLUG, L.S. 4694



CORNER RECORD		
LOTS 5 & 6, 5 R.M. 29		
MILL VALLEY	MARIN COUNTY	CALIFORNIA
SCALE: 1" = 20'	DATE: 4/23/08	DRAWN BY: SHEET 2 OF 2
LAWRENCE P. DOYLE		
LAND SURVEYOR/CIVIL ENGINEER		
100 HELENS LANE MILL VALLEY CA 94942 (415-388-9585)		
		DRAWING NO. 1780-08