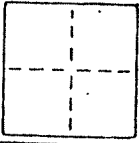


CORNER RECORD

COUNTY OF MARIN T. _____ R. _____ MERIDIAN CALIFORNIA

CORNER TYPE: GOVT. CORNER MEANDER RANCHO CONTROL OTHER

CORNER IDENTIFICATION — DATE OF VISIT _____ 19__



CORNER — LEFT AS FOUND FOUND AND TAGGED REESTABLISHED OBLITERATED CORNER REBUILT

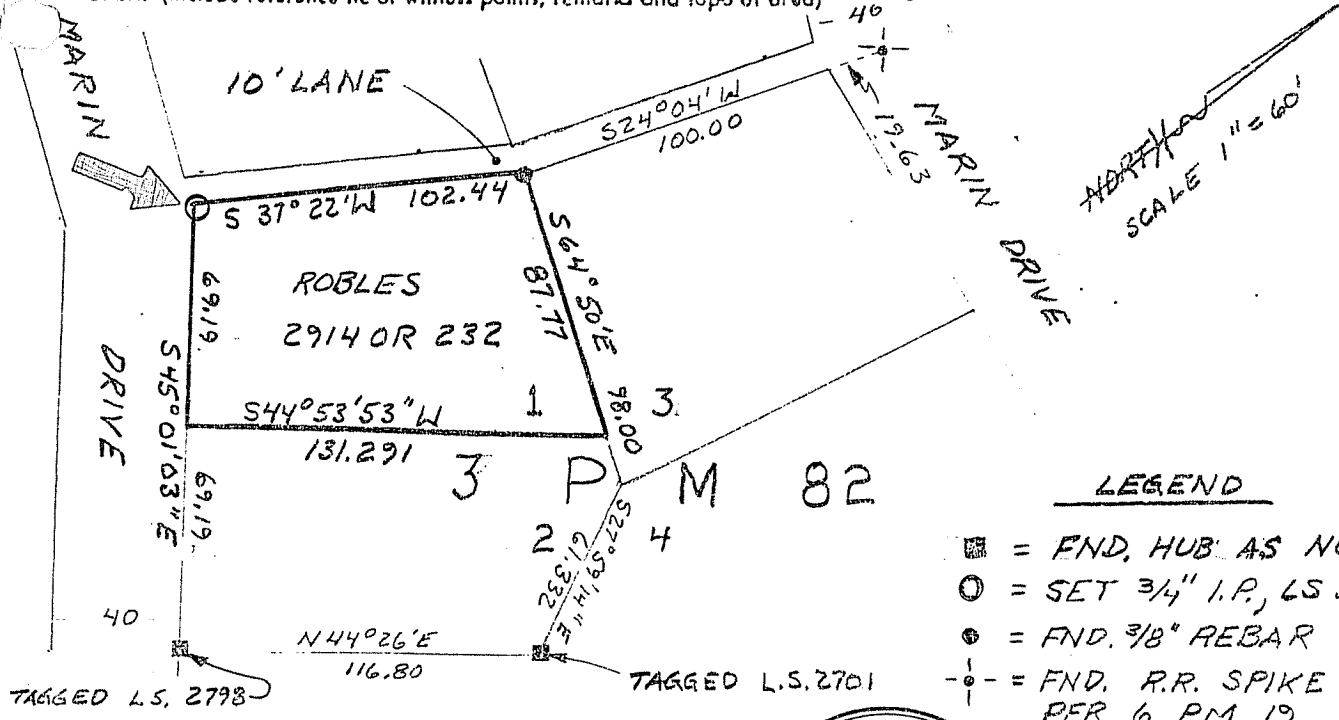
PHYSICAL DESCRIPTION OF CORNER FOUND; EVIDENCE AND METHOD USED TO IDENTIFY OR REESTABLISH
Reset corner of Parcel 1 of 3 Parcel Maps 82, "Land Division of Par. "A" of "Division of Lots 53 thru 60 and 33 thru 39, Tamalpais Woods Addition #2", from recovered monuments shown below. Note is made of found railroad spike per 6 PM 19, "Lots 4,12,13 & Portion Block 5, Tamalpais Woods Addition #2.
A.P. No. 49-227-31

PHYSICAL DESCRIPTION OF MONUMENTS REBUILT OR PERPETUATED

3/4" Iron Pipe Tagged L.S. 5296

CALIFORNIA COORDINATE SYSTEM ORDER: FIRST SECOND THIRD
STATIONS USED: NGS (USC & OS) STATE COUNTY OTHER STATION _____ STATION _____
ZONE _____ ELEVATION _____ NORTHINGS (Y) _____ EASTINGS (X) _____

SKETCH: (Include reference tie or witness points, remarks and topo of area)



LEGEND

- = FND. HUB AS NOTED
- = SET 3/4" I.P., LS 5296
- = FND. 3/8" REBAR
- = FND. R.R. SPIKE PER 6 PM 19

REGISTERED LAND SURVEYOR'S CERTIFICATE
 THIS CORNER WAS PREPARED BY ME OR UNDER MY SUPERVISION IN CONFORMANCE WITH THE LAND SURVEYORS ACT
 SIGNED Steven H. Jacob 11, 1986
 No. 5296
 STATE OF CALIFORNIA

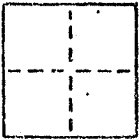
REGISTERED PROFESSIONAL ENGINEER
 COUNTY SURVEYOR'S CERTIFICATE
 THIS CORNER WAS RECEIVED 8-15 1986
 AND EXAMINED BY Charles E. Murphy 8-27 1986
 No. 18652 TITLE _____
 Exp. 6-30-89
 DOCUMENT NO. _____
 CIVIL
 STATE OF CALIFORNIA
 DEPUTY COUNTY SURVEYOR

3 of 3 AUG 15 1986

CORNER RECORD

Marin County Public Works

COUNTY OF MARIN T. R. CORNER TYPE: GOVT. CORNER MEANDER SANCHO CONTROL OTHER CORNER IDENTIFICATION - DATE OF VISIT



CORNER - LEFT AS FOUND FOUND AND TAGGED REESTABLISHED OBLITERATED CORNER RESULT

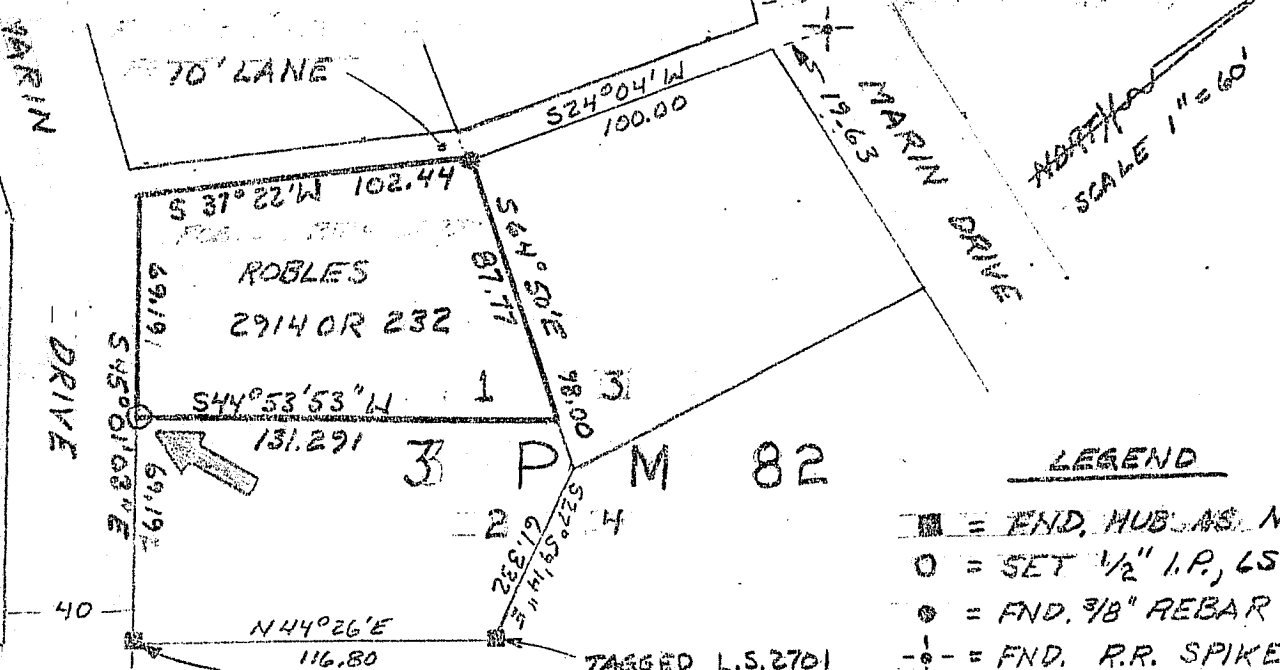
PHYSICAL DESCRIPTION OF CORNER FOUND; EVIDENCE AND METHOD USED TO IDENTIFY OR REESTABLISH. Reset corner of Parcel 1 of 3 Parcel Maps 82, "Land Division of Par. "A" of "Division of Lots 53 thru 60 and 33 thru 39, Tamalpais Woods Addition #2", from recovered monuments shown below. Note is made of found railroad spike per 6 PM 19, "Lots 4,12,13 & Portion Block 5, Tamalpais Woods Addition #2. A.P. No. 49-227-31

PHYSICAL DESCRIPTION OF MONUMENTS RESULT OR PERPETUATED

1/2" Iron Pipe Tagged L.S. 5296

CALIFORNIA COORDINATE SYSTEM ORDER: FIRST SECOND THIRD STATIONS USED: NGS (USC & GS) STATE COUNTY OTHER STATION ZONE ELEVATION NORTHINGS (Y) EASTINGS (X)

Notes: (Include reference tie or witness points, remarks and topo of area)



LEGEND

- = END. HUB. AS NOTED,
○ = SET 1/2" I.P., LS 5296
● = FND. 3/8" REBAR
⊕ = FND. R.R. SPIKE PER 6 PM 19

Surveyor's Certificate for Steven H. Jacob, State of California, signed 11/18/86. Includes a circular seal for 'LICENSED LAND SURVEYOR STEVEN H. JACOB STATE OF CALIFORNIA'.

County Surveyor's Certificate for Charles E. Munday, Deputy County Surveyor, No. 18652, received 8-25-86. Includes a circular seal for 'REGISTERED PROFESSIONAL ENGINEER CHARLES E. MUNDAY'.