

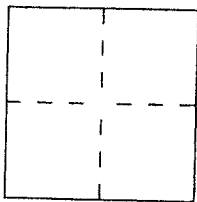
CORNER RECORD

Document Number 49-225-03

City of Mill Valley

County of Marin, California

Brief Legal Description Lots 17, 18 & 19 of 5 RM 53



CORNER TYPE

- Government Corner
- Meander
- Rancho
- Date of Survey \_\_\_\_\_
- Control
- Property
- Other

COORDINATES (Optional)

N. \_\_\_\_\_  
 E. \_\_\_\_\_  
 Zone \_\_\_\_\_ Datum \_\_\_\_\_  
 Elev. \_\_\_\_\_

Corner — Left as found  Found and tagged  Established  Reestablished  Rebuilt

Identification and type of corner found: Evidence used to identify or procedure used to establish or reestablish the corner:

Found 3/4" Iron Pipes per 20 RM 52  
RCE 18221

A description of the physical condition of the monument as found and as set or reset:

Set 1/2" Rebar & Caps Embossed LS 5290

SURVEYOR'S STATEMENT

This Corner Record was prepared by me or under my direction in conformance with the Land Surveyors' Act on June 3rd 2014

Signed David Hays L.S. or R.C.E. Number LS 5290



COUNTY SURVEYOR'S STATEMENT

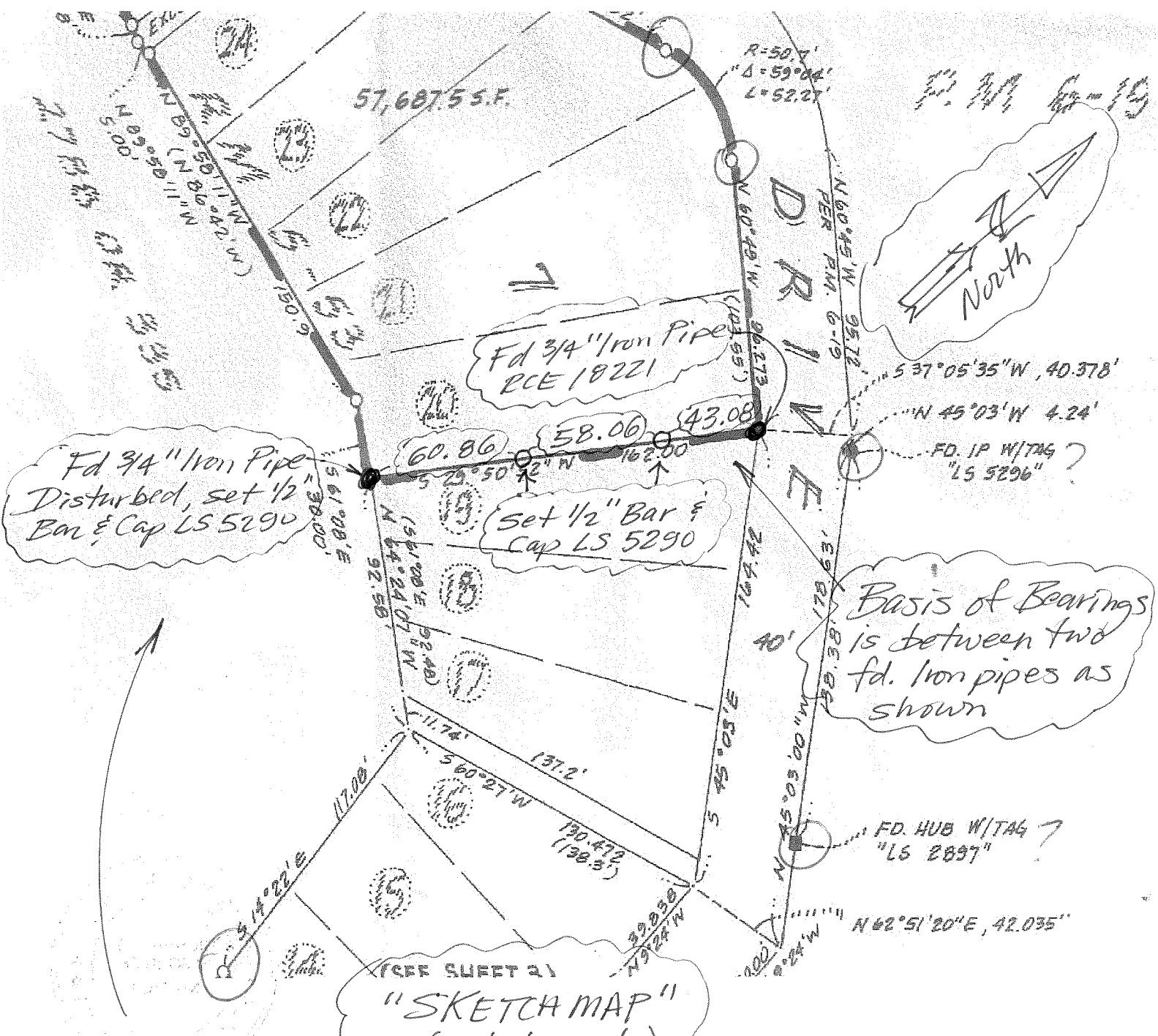
This Corner Record was received JUNE 16, 2014 and examined

and filed July 14, 2014

Signed Richard G. Simonitch Title DEPUTY



County Surveyor's Comment \_\_\_\_\_



Indicates information added to a portion of 20 RM 52 by D. Harp