

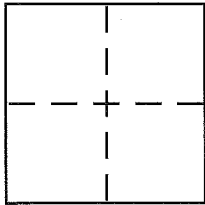
**CORNER RECORD**

Document Number APN 049-214-13

City of MILL VALLEY

County of Marin, California

Brief Legal Description Lot 191 & Lot 192 Map of Tamalpais Valley Addition  
Subd. No. 175 R.M. 48



**CORNER TYPE**

Government Corner  Control   
Meander  Property   
Rancho  Other   
Date of Survey \_\_\_\_\_

**COORDINATES (Optional)**

N. \_\_\_\_\_  
E. \_\_\_\_\_  
Zone \_\_\_\_\_ NAD27  NAD83   
NAD83 Epoch \_\_\_\_\_  
Elev. \_\_\_\_\_  
Vert. Datum: NGVD29  NAVD88   
Meas. Units: Metric  Imperial

Corner - Left as found  Found and tagged  Established  Reestablished  Rebuilt

Identification and type of corner found: Evidence used to identify or procedure used to establish or reestablish the corner:  
Reestablished lot corners as shown on Record of Survey filed in Book 26 of  
Surveys at Page 4, Marin County Records. Found 3/4" iron pipe monuments at  
southeast corner Lot 192 and southwest corner Lot 191 per said survey.  
Used these monuments as basis of bearings for reestablishing corners  
shown hereon page 2 of 2.

A description of the physical condition of the monument as found and as set or reset: Set witness corner  
monuments on northeasterly projection of both the northwest Lot 191 line  
and the southeast Lot 192 line as shown herein page 2 of 2. See also  
reference monuments found on northwest Lot 191 line.

**SURVEYOR'S STATEMENT**

This Corner Record was prepared by me or under my direction in conformance with  
the Land Surveyor's Act on November 1 2013

Signed Ray C. Carlson P.L.S. or R.C.E. No. 3890



**COUNTY SURVEYOR'S STATEMENT**

This Corner Record was received NOVEMBER 8, 2013

and examined and filed JANUARY 16, 2014

Signed Richard G. Simonitch P.L.S. or R.C.E. No. 7821

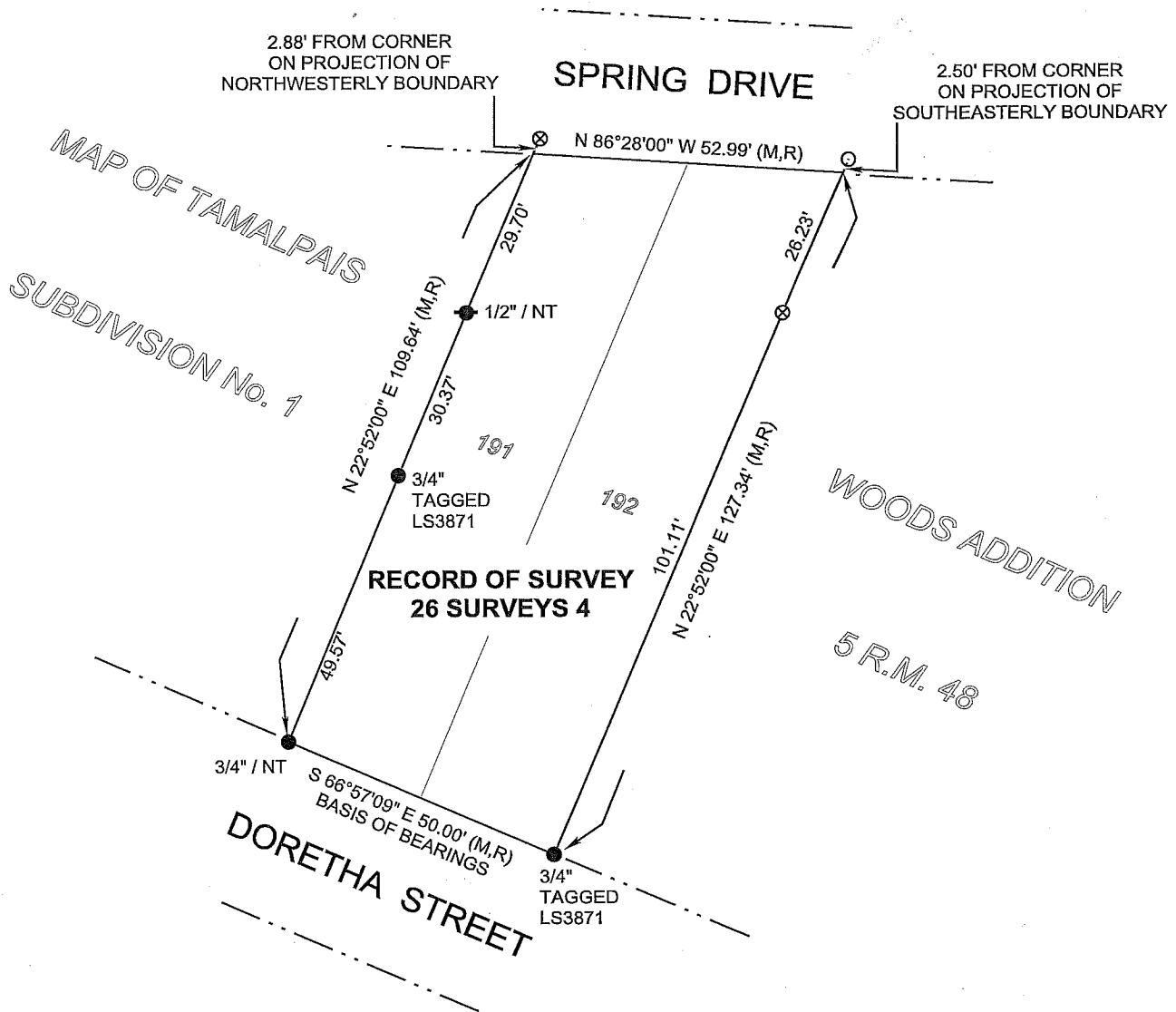
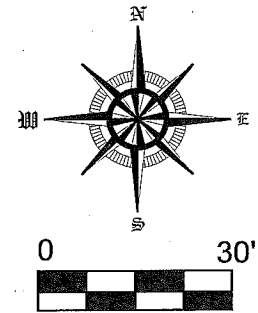
Title DEPUTY CO. SURVEYOR



County Surveyor's Comment \_\_\_\_\_

**LEGEND**

- SET 1/2" IRON PIPE TAGGD LS 3890
- 3/4" IRON PIPE FOUND AS NOTED
- ⊗ SET # 3 REBAR TAGGED LS 3890
- 1/2" REBAR FOUND AS NOTED
- NT NO IDENTIFYING TAG FOUND
- R RECORD OF SURVEY / 26 SURVEYS 4
- M MEASURED




**RAY CARLSON**  
 AND ASSOCIATES, INC.  
 Mapping a Better World™  
 LAND SURVEYING - GIS - PLANNING - RESEARCH

411 RUSSELL AVE  
 SANTA ROSA, CA 95403  
 PH: 707-438-7649  
 FAX: 707-571-0541

JOB No. 2013-091 NOVEMBER 2013