

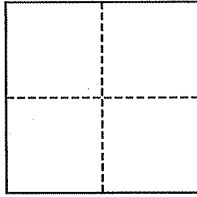
CORNER RECORD

City of Mill Valley

Document Number A.P.N. 49-212-06

County of Marin, California

Brief Legal Description Lands of Gilfrey, per 2003 ROS 154



CORNER TYPE

Government Corner Control
Meander Property
Rancho Other
Date of Survey May 4, 2006

COORDINATES (Optional)

N. _____
E. _____
Zone _____ NAD27 NAD83
NAD83 Epoch _____
Elev. _____
Vert. Datum: NGVD29 NAVD88
Meas. Units: Metric Imperial

Corner- Left as found Found and tagged Established Reestablished Rebuilt

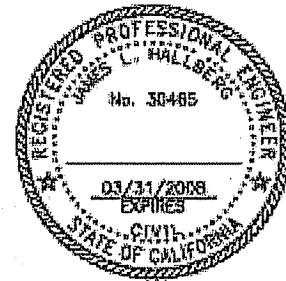
Identification and type of corner found: Evidence used to identify or procedure used to establish or reestablish the corner:
Found Rebar at the most southerly corner, and Rebar&Cap (RCE 18200) at the the most-westerly corner

A description of the physical condition of the monument as found and as set or reset: Set 2"x2" wood Hub & Tack along the south-westerly line of said parcel as shown, per 2003 ROS 154.

SURVEYOR'S STATEMENT

This corner Record was prepared by me or under my direction in conformance with the Land Surveyor's Act on May 4, 2006

Signed [Signature] P.L.S. or R.C.E. No. 30465

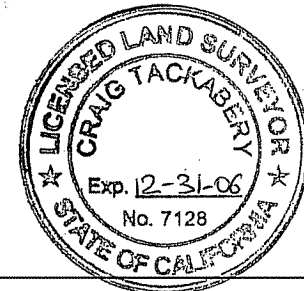


COUNTY SURVEYOR'S STATEMENT

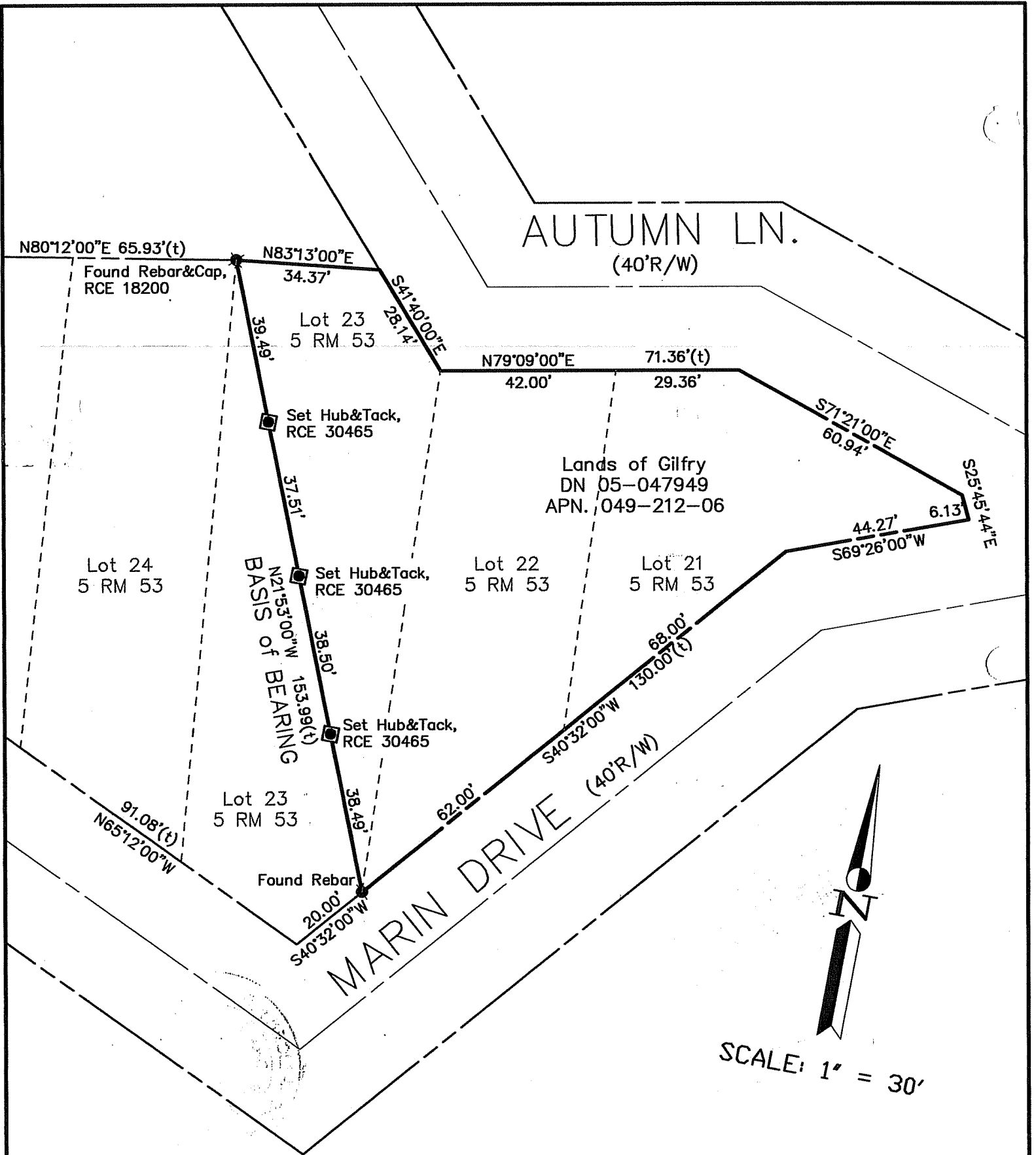
This Corner Record was received AUGUST 17, 2006 and examined and filed SEPTEMBER 14, 2006

Signed [Signature] P.L.S. or R.C.E. No. 7128

Title COUNTY SURVEYOR



County Surveyor's Comment _____



Note: All distances are in feet and decimals thereof.

SHEET 1 OF 1
 SCALE: 1" = 30' DESIGN: XXX
 DATE: 2006-05-04 DRAWN: XXX
 FILE: 2006-060 CHECKED: J.L.H
 2006-060\DWG\BAS-BNDY2.DWG,COR-REC

J.L. ENGINEERING
 CIVIL ENGINEERS-LAND SURVEYORS
 1539 4th ST., SAN RAFAEL, CA. 94901 (415) 457-6647

Corner Record

Lands of Gilfry - 848 Marin Drive
 APN 049-212-06, Mill Valley, Marin County, CA