

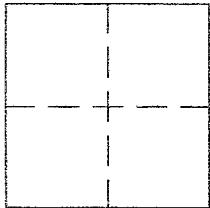
CORNER RECORD

Document Number APN 049-171-34 & 33

City of MILL VALLEY

County of MARIN, California

Brief Legal Description PARCELS 3 AND 4 OF 20 PM 17



CORNER TYPE

Government Corner Control
Meander Property
Rancho Other
Date of Survey AUGUST, 2014

COORDINATES (Optional)

N. _____
E. _____
Zone _____ NAD27 NAD83
NAD83 Epoch _____
Elev. _____
Vert. Datum: NGVD29 NAVD88
Meas. Units: Metric Imperial

Corner - Left as found Found and tagged Established Reestablished Rebuilt

Identification and type of corner found: Evidence used to identify or procedure used to establish or reestablish the corner:

FOUND 3/4" IP TAGGED PLS 3971 AND CUT 'V' IN WATER METER AS SHOWN ON 20 PM 17
AND ON REVERSE

A description of the physical condition of the monument as found and as set or reset:

SET 3/4" IRON PIPES & TAGS, PLS 5296, 1/2" REBARS & TAGS, PLS 5296, A HUB & TAG PLS 5296
AND A PK NAIL & TAG, PLS 5296 AS SHOWN ON REVERSE.

SURVEYOR'S STATEMENT

This Corner record was prepared by me or under my direction in conformance with
the Land Surveyor's Act on AUGUST 30, 2014

Signed [Signature] P.L.S. or R.C.E. No. PLS 5296



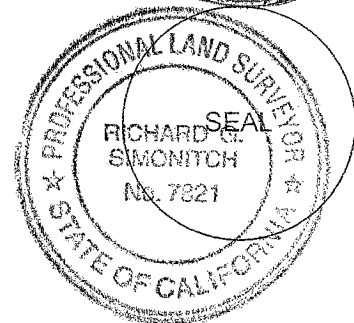
COUNTY SURVEYOR'S STATEMENT

This Corner Record was received OCTOBER 6, 2015

and examined and filed APRIL 25, 2016

Signed [Signature] P.L.S. or R.C.E. No. 7821

Title County Surveyor



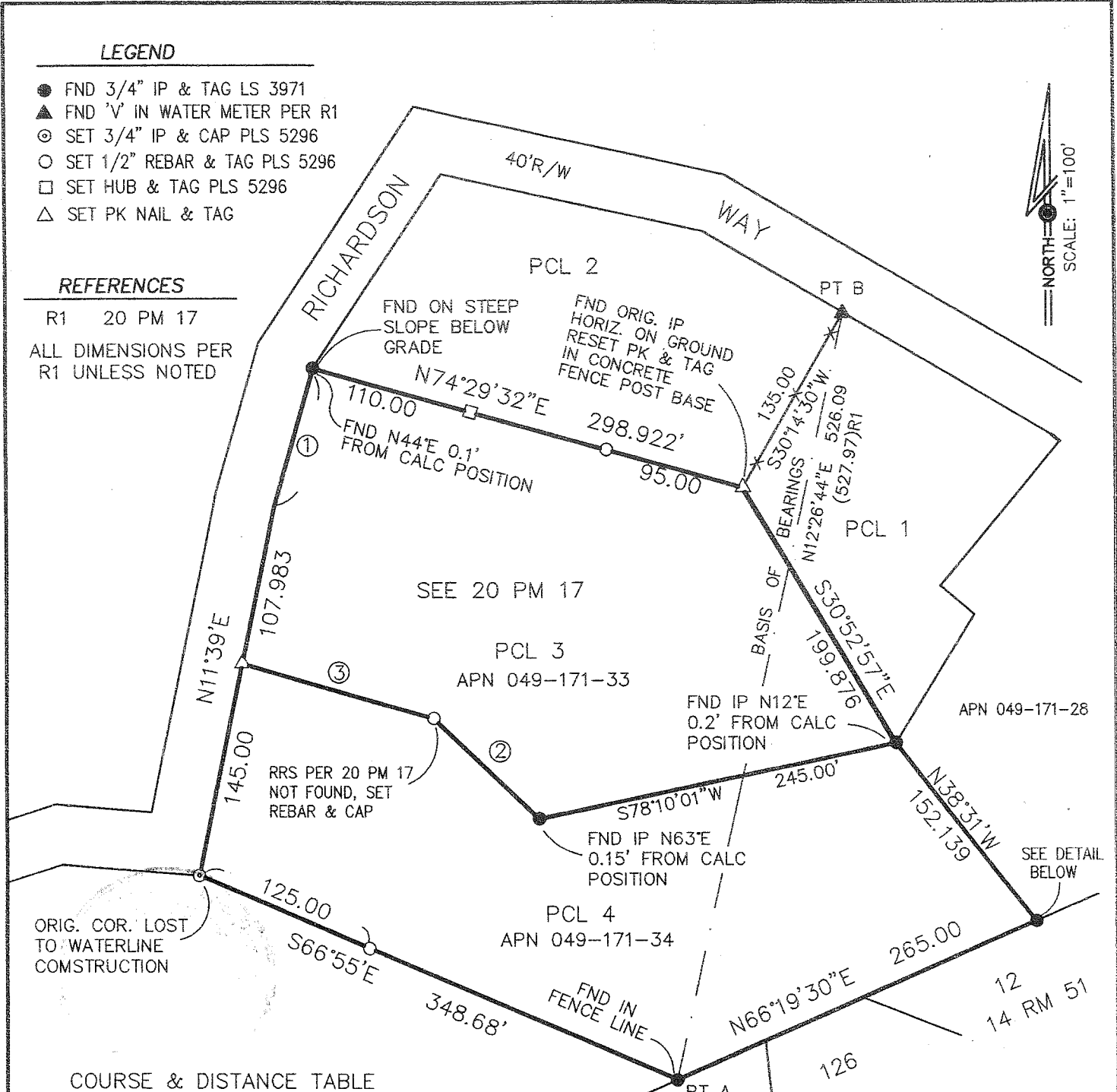
County Surveyor's Comment _____

LEGEND

- FND 3/4" IP & TAG LS 3971
- ▲ FND 'V' IN WATER METER PER R1
- ⊙ SET 3/4" IP & CAP PLS 5296
- SET 1/2" REBAR & TAG PLS 5296
- SET HUB & TAG PLS 5296
- △ SET PK NAIL & TAG

REFERENCES

R1 20 PM 17
 ALL DIMENSIONS PER R1 UNLESS NOTED



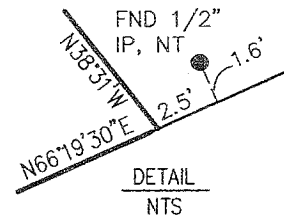
COURSE & DISTANCE TABLE

①	N16° 17' E	96.293'
②	N46° 33' W	97.00'
③	N74° 06' 11" W	134.362'

PREPARED BY:

JACOBS LAND SURVEYING
 P.O. BOX 7829
 COTATI, CA. 94931
 415 454-2235

JOB NO.14-1381&82-M FB#73
 DWG FILE: 2014/AUGUST/FLADCR2



DETAIL
 NTS

NOTE: DOES NOT APPEAR TO BE A SURVEYOR SET MONUMENT