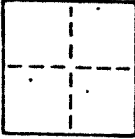


CORNER RECORD

COUNTY OF Marin T. _____ R. _____ MERIDIAN _____ CALIFORNIA

CORNER TYPE: GOVT. CORNER MEANDER LANCHO CONTROL OTHER

CORNER IDENTIFICATION — DATE OF VISIT _____ 19____



AP 49-161-28

CORNER — LEFT AS FOUND FOUND AND TAGGED REESTABLISHED OBLITERATED CORNER REBUILT

PHYSICAL DESCRIPTION OF CORNER FOUND; EVIDENCE AND METHOD USED TO IDENTIFY OR REESTABLISH

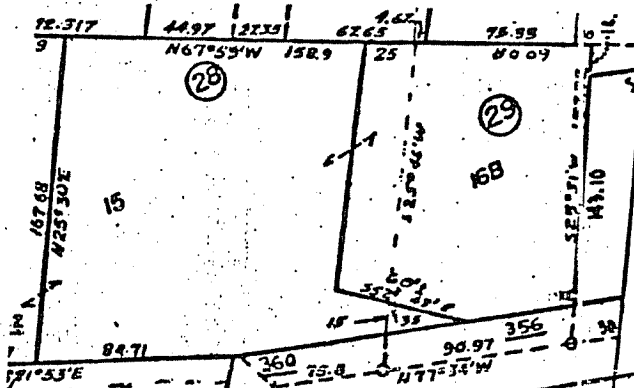
Ptn. Lot 15 and 16B, Block 'A' Map No. 1 of Tamalpais Valley, 2 R.M. 119

Points found as indicated in 20 P.M. 17

PHYSICAL DESCRIPTION OF MONUMENTS REBUILT OR PERPETUATED

CALIFORNIA COORDINATE SYSTEM ORDER: FIRST SECOND THIRD
STATIONS USED: NGS (USC & GS) STATE COUNTY OTHER STATION _____ STATION _____
ZONE _____ ELEVATION _____ NORTHINGS (Y) _____ EASTINGS (X) _____

SKETCH: (Include reference tie or witness points, remarks and topo of area)



Found 'V' cut in rim of water meter box.

RICHARDSON

20 P.M. 17

SURVEYOR'S CERTIFICATE
THIS CORNER RECORD WAS PREPARED BY ME OR UNDER MY DIRECTION IN CONFORMANCE WITH THE LAND SURVEYORS ACT ON December 30 1987
BY JEROME BOWARD BRUNNER, JR.
SIGNED: [Signature]
L.S. or R.C.E. No. No. 3887
STATE OF CALIFORNIA
EX. C. 30 '88

COUNTY SURVEYOR'S CERTIFICATE
THE CORNER RECORD WAS RECEIVED AND EXAMINED AND FILED 3/11
BY: [Signature]
TITLE: Replot
DOCUMENT No. _____
STATEMENT ON BACK OF SHEET
EX. 3-31-88
REGISTERED PROFESSIONAL ENGINEER
ROBERT D. BEAUMONT
C 30212
CIVIL
STATE OF CALIFORNIA

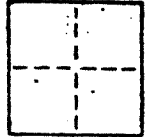
CORNER RECORD

2/6

COUNTY OF Marin T. _____ R. _____ MERIDIAN _____ CALIFORNIA

CORNER TYPE: GOV'T. CORNER MEANDER RANCHO CONTROL OTHER

CORNER IDENTIFICATION — DATE OF VISIT _____ 19____



CORNER — LEFT AS FOUND FOUND AND TAGGED REESTABLISHED OBLITERATED CORNER REBUILT

PHYSICAL DESCRIPTION OF CORNER FOUND; EVIDENCE AND METHOD USED TO IDENTIFY OR REESTABLISH

Ptn. Lot 15 and 16B, Block 'A' Map No. 1 of Tamalpais Valley, 2 R.M. 119

PHYSICAL DESCRIPTION OF MONUMENTS REBUILT OR PERPETUATED

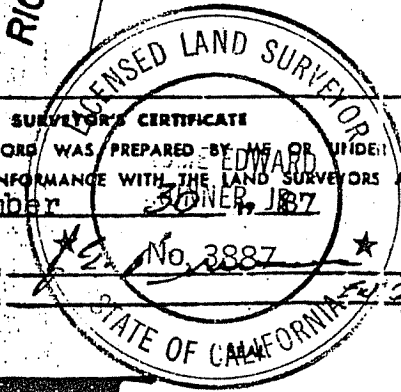
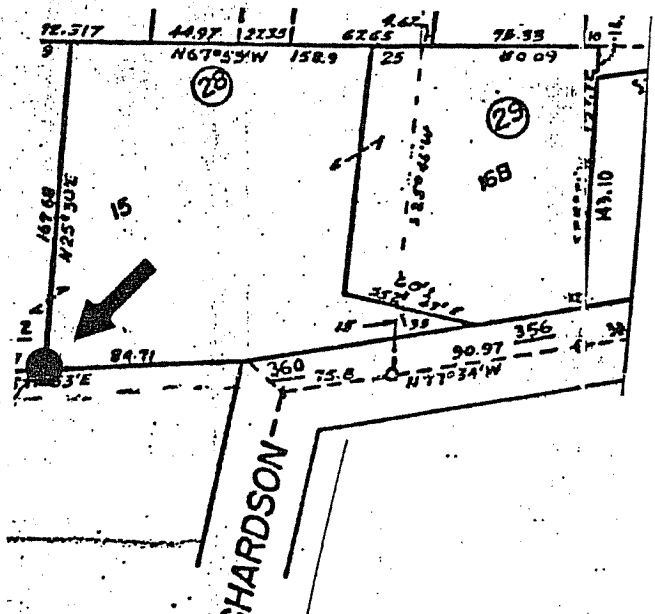
Set conc. nail and tag L.S. 3887 in pavement.

CALIFORNIA COORDINATE SYSTEM ORDER: FIRST SECOND THIRD

STATIONS USED: NGS (USC & GS) STATE COUNTY OTHER STATION _____ STATION _____

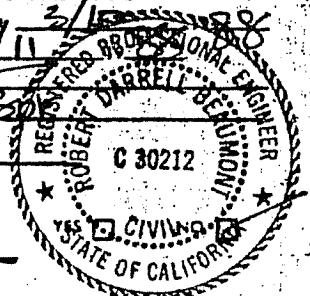
ZONE _____ ELEVATION _____ NORTHINGS (Y) _____ EASTINGS (X) _____

SKETCH: (Include reference tie or witness points, remarks and topo of area)



SURVEYOR'S CERTIFICATE
THIS CORNER RECORD WAS PREPARED BY ME OR UNDER MY DIRECTION IN CONFORMANCE WITH THE LAND SURVEYORS ACT ON December 30 1987
SIGNED: [Signature] No. 3887
L.S. or R.C.E. No.: EL 2/30/88

COUNTY SURVEYOR'S CERTIFICATE
THE CORNER RECORD WAS RECEIVED 3/15/88 AND EXAMINED AND FILED 3/11/88
BY: [Signature]
TITLE: DEPOSITION
DOCUMENT No. _____
STATEMENT ON BACK OF SHEET
EX. 3-31-88



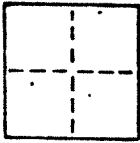
CORNER RECORD

3/6

COUNTY OF Marin T. _____ R. _____ MERIDIAN CALIFORNIA

CORNER TYPE: GOVT. CORNER MEANDER RANCHO CONTROL OTHER

CORNER IDENTIFICATION — DATE OF VISIT _____ 19____



CORNER — LEFT AS FOUND FOUND AND TAGGED REESTABLISHED OBLITERATED CORNER REBUILT

PHYSICAL DESCRIPTION OF CORNER FOUND; EVIDENCE AND METHOD USED TO IDENTIFY OR REESTABLISH

Ptn. Lot 15 and 16B, Block 'A' Map No. 1 of Tamalpais Valley, 2 R.M. 119

PHYSICAL DESCRIPTION OF MONUMENTS REBUILT OR PERPETUATED

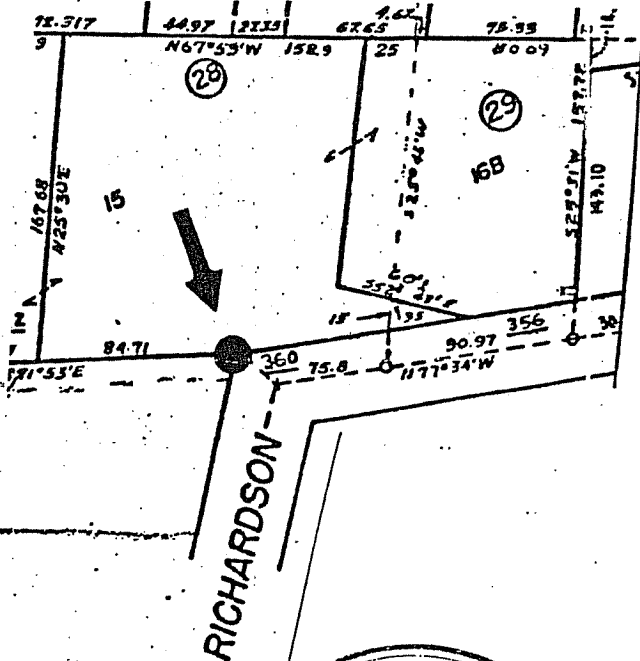
Set rebar and cap L.S. 3887

CALIFORNIA COORDINATE SYSTEM ORDER: FIRST SECOND THIRD

STATIONS USED: NGS (USC & GS) STATE COUNTY OTHER STATION _____ STATION _____

ZONE _____ ELEVATION _____ NORTH NGS (Y) _____ EASTINGS (X) _____

SKETCH: (Include reference tie or witness points, remark, and topo of area)

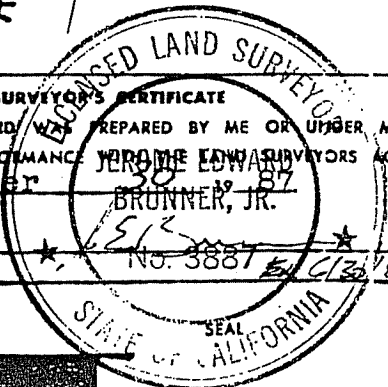


SURVEYOR'S CERTIFICATE

THIS CORNER RECORD WAS PREPARED BY ME OR UNDER MY DIRECTION IN CONFORMANCE WITH THE LAND SURVEYORS ACT ON December 30, 1987

BY: EDWARD BRUNNER, JR.

SIGNED: [Signature]
L.S. or R.C.E. No.: No. 3887



COUNTY SURVEYOR'S CERTIFICATE

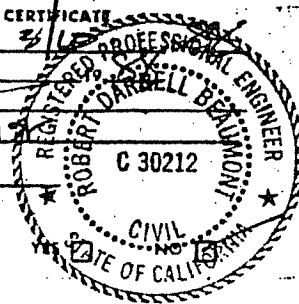
THE CORNER RECORD WAS RECEIVED AND EXAMINED AND FILED 3/11

BY: [Signature]
TITLE: Deputy

DOCUMENT No. _____

STATEMENT ON BACK OF SHEET

ex. 3-3188



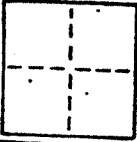
CORNER RECORD

4/6

COUNTY OF Marin T. _____ R. _____ MERIDIAN _____ CALIFORNIA

CORNER TYPE: GOVT. CORNER MEANDER RANCHO CONTROL OTHER

CORNER IDENTIFICATION — DATE OF VISIT _____ 19____



CORNER — LEFT AS FOUND FOUND AND TAGGED REESTABLISHED OBLITERATED CORNER REBUILT

PHYSICAL DESCRIPTION OF CORNER FOUND; EVIDENCE AND METHOD USED TO IDENTIFY OR REESTABLISH

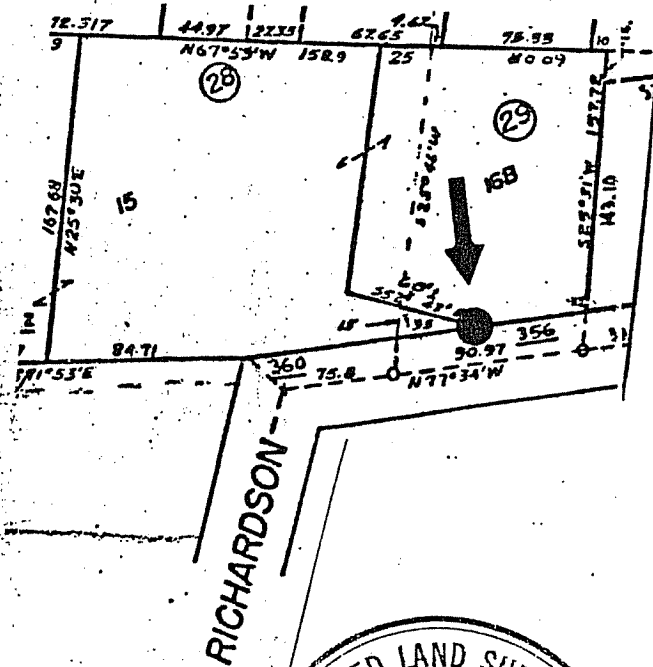
Ptn. Lot 15 and 16B, Block 'A' Map No. 1 of Tamalpais Valley, 2 R.M. 119

PHYSICAL DESCRIPTION OF MONUMENTS REBUILT OR PERPETUATED

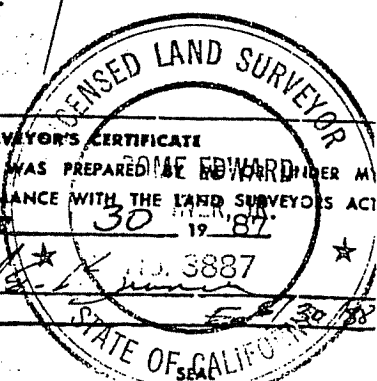
Set rebar and cap L.S. 3887.

CALIFORNIA COORDINATE SYSTEM ORDER: FIRST SECOND THIRD
STATIONS USED: NGS (USC & GS) STATE COUNTY OTHER STATION _____ STATION _____
ZONE _____ ELEVATION _____ NORTHINGS (Y) _____ EASTINGS (X) _____

SKETCH: (Include reference tie or witness points, remarks and topo of area)

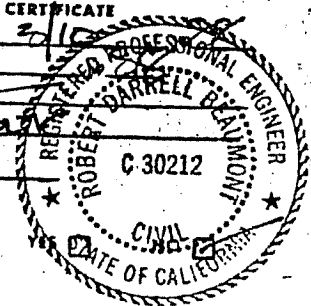


RICHARDSON



SURVEYOR'S CERTIFICATE
THIS CORNER RECORD WAS PREPARED BY EDWARD UNDER MY
DIRECTION IN CONFORMANCE WITH THE LAND SURVEYOR'S ACT
ON December 30 1987.
SIGNED: [Signature] L.S. No. 3887
L.S. or R.C.E. No. _____

COUNTY SURVEYOR'S CERTIFICATE
THE CORNER RECORD WAS RECEIVED 3/10
AND EXAMINED AND FILED 3/11
BY: RDB
TITLE: Deplo
DOCUMENT No. _____
STATEMENT ON BACK OF SHEET
EX. 3-31-88



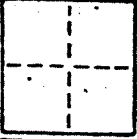
CORNER RECORD

5/6

COUNTY OF Marin T. _____ R. _____ MERIDIAN _____ CALIFORNIA

CORNER TYPE: GOVT. CORNER MEANDER ANCHO CONTROL OTHER

CORNER IDENTIFICATION - DATE OF VISIT _____ 19__



CORNER - LEFT AS FOUND FOUND AND TAGGED REESTABLISHED OBLITERATED CORNER REBUILT

PHYSICAL DESCRIPTION OF CORNER FOUND; EVIDENCE AND METHOD USED TO IDENTIFY OR REESTABLISH

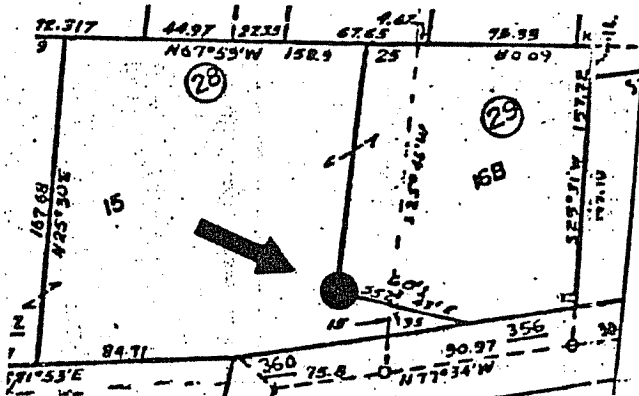
Ptn. Lot 15 and 16B, Block 'A' Map No. 1 of Tamalpais Valley, 2 R.M. 119

PHYSICAL DESCRIPTION OF MONUMENTS REBUILT OR PERPETUATED

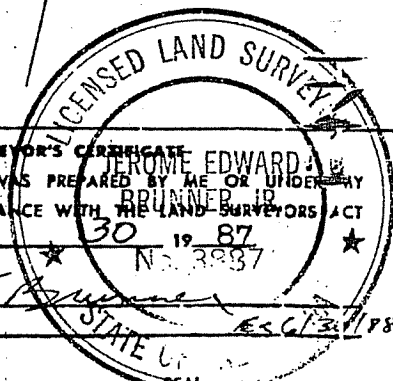
Set rebar and cap L.S. 3387.

CALIFORNIA COORDINATE SYSTEM ORDER: FIRST SECOND THIRD
STATIONS USED: NGS (USC & GS) STATE COUNTY OTHER STATION _____ STATION _____
ZONE _____ ELEVATION _____ NORTHINGS (Y) _____ EASTINGS (X) _____

SKETCH: (Include reference tie or witness points, remarks and topo of area)



RICHARDSON



SURVEYOR'S CERTIFICATE
THIS CORNER RECORD WAS PREPARED BY ME OR UNDER MY DIRECTION IN CONFORMANCE WITH THE LAND SURVEYORS ACT ON December 30 1987

SIGNED: [Signature]
L.S. or R.C.E. No.: ESG 3387

COUNTY SURVEYOR'S CERTIFICATE

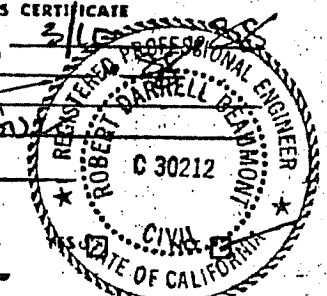
THE CORNER RECORD WAS RECEIVED AND EXAMINED AND FILED 3/11

BY: [Signature]
TITLE: Deputy

DOCUMENT No. _____

STATEMENT ON BACK OF SHEET

EX. 3-31-88



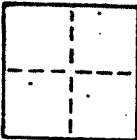
CORNER RECORD

6/6

COUNTY OF Marin T. _____ R. _____ MERIDIAN _____ CALIFORNIA

CORNER TYPE: GOV'T. CORNER MEANDER RANCHO CONTROL OTHER

CORNER IDENTIFICATION - DATE OF VISIT _____ 19____



CORNER - LEFT AS FOUND FOUND AND TAGGED REESTABLISHED OBLITERATED CORNER REBUILT

PHYSICAL DESCRIPTION OF CORNER FOUND; EVIDENCE AND METHOD USED TO IDENTIFY OR REESTABLISH

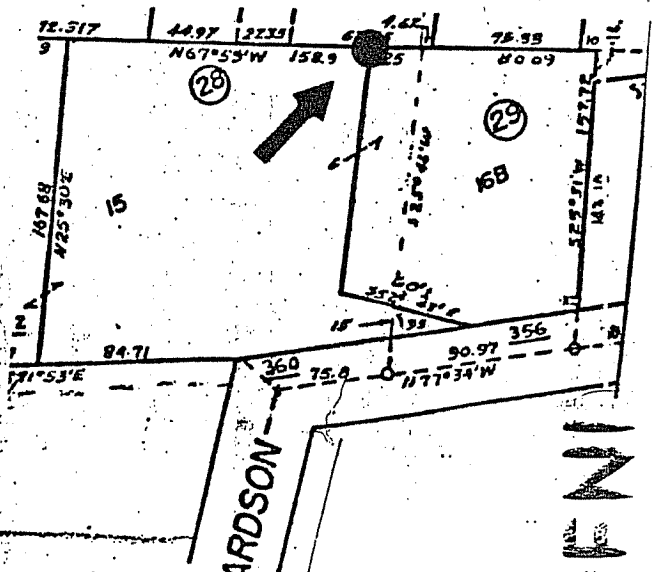
Ptn. Lot 15 and 16B, Block 'A' Map No. 1 of Tamalpais Valley, 2 R.M. 119

PHYSICAL DESCRIPTION OF MONUMENTS REBUILT OR PERPETUATED

Set rebar and cap L.S. 3887.

CALIFORNIA COORDINATE SYSTEM ORDER: FIRST SECOND THIRD
STATIONS USED: NGS (USC & GS) STATE COUNTY OTHER STATION _____
ZONE _____ ELEVATION _____ NORTHINGS (Y) _____ EASTINGS (X) _____

SKETCH: (Include reference tie or witness points, remarks and topo of area)



20 P.M. 17
RICHARDSON
LICENSED LAND SURVEYOR

SURVEYOR'S CERTIFICATE
THIS CORNER RECORD WAS PREPARED BY ME OR UNDER MY DIRECTION IN CONFORMANCE WITH THE LAND SURVEYORS ACT ON December 30 1987
No. 3887
SIGNED: [Signature]
L.S. or R.C.E. No. 6130/88

COUNTY SURVEYOR'S CERTIFICATE
THE CORNER RECORD WAS RECEIVED 2/11 AND EXAMINED AND FILED 2/11
BY: RDB
TITLE: DEPOS
DOCUMENT No. _____
STATEMENT ON BACK OF SHEET
Ex. 3-31-88

