



JERRICO ASSOCIATES
 SUITE 27
 77 MARK DRIVE
 SAN RAFAEL, CA 94903

A.P. # 49-161-28 6726

CORNER RECORD

1/6

COUNTY OF Marin T. _____ R. _____ MERIDIAN _____ CALIFORNIA

CORNER TYPE: GOVT. CORNER MEANDER RANCHO CONTROL OTHER

CORNER IDENTIFICATION — DATE OF VISIT _____ 19__



CORNER — LEFT AS FOUND FOUND AND TAGGED REESTABLISHED OBLITERATED CORNER REBUILT

PHYSICAL DESCRIPTION OF CORNER FOUND, EVIDENCE AND METHOD USED TO IDENTIFY OR REESTABLISH

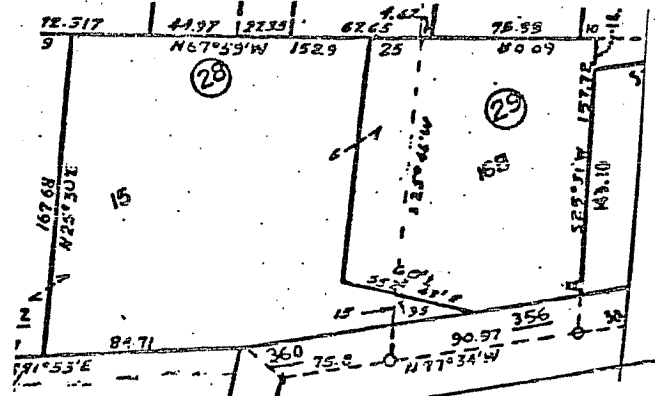
Ptn. Lot 15 and 16B, Block 'A' Map No. 1 of Tamalpais Valley, 2 R.M. 119

Points found as indicated in 20 P.M. 17

PHYSICAL DESCRIPTION OF MONUMENTS REBUILT OR PERPETUATED

CALIFORNIA COORDINATE SYSTEM ORDER: FIRST SECOND THIRD
 STATIONS USED: NGS (USC & GS) STATE COUNTY OTHER STATION _____ STATION _____
 ZONE _____ ELEVATION _____ NORTHINGS (7) _____ EASTINGS (X) _____

SKETCH: (Include reference tie or witness points, remarks and topo of area)

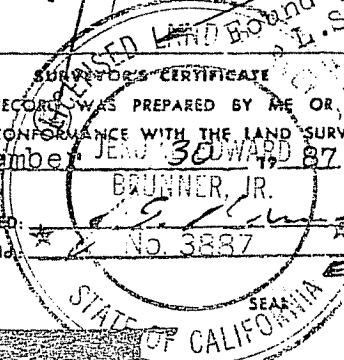


Found 'V' cut in rim of water meter box.

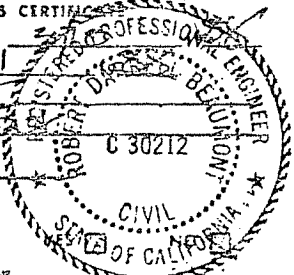
20 P.M. 17

RICHARDSON

SURVEYOR'S CERTIFICATE
 THIS CORNER RECORD WAS PREPARED BY ME OR UNDER MY DIRECTION IN CONFORMANCE WITH THE LAND SURVEYORS ACT ON December 30 1987
 SIGNED: JENNIFER J. BRUNNER, JR.
 L.S. or R.C.E. No. 3887



COUNTY SURVEYOR'S CERTIFICATE
 THE CORNER RECORD WAS RECEIVED AND EXAMINED AND FILED 5/11
 BY: RDP
 TITLE: Deputy
 DOCUMENT No. _____
 STATEMENT ON BACK OF SHEET
EX. 3-31-88



CORNER RECORD

COUNTY OF Marin T. _____ R. _____ MERIDIAN CALIFORNIA
 CORNER TYPE: GOVT. CORNER MEANDER RANCHO CONTROL OTHER
 CORNER IDENTIFICATION — DATE OF VISIT _____ 19____



CORNER — LEFT AS FOUND FOUND AND TAGGED REESTABLISHED OBLITERATED CORNER REBUILT

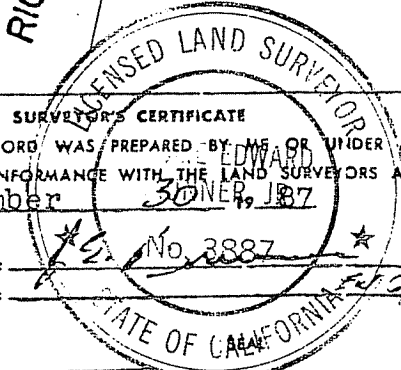
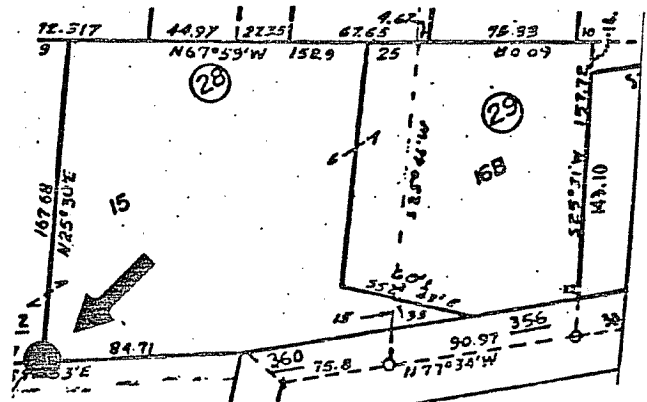
PHYSICAL DESCRIPTION OF CORNER FOUND, EVIDENCE AND METHOD USED TO IDENTIFY OR REESTABLISH
Ptn. Lot 15 and 16B, Block 'A' Map No. 1 of Tamalpais Valley, 2 R.M. 119

PHYSICAL DESCRIPTION OF MONUMENTS REBUILT OR PERPETUATED

Set conc. nail and tag L.S. 3887 in pavement.

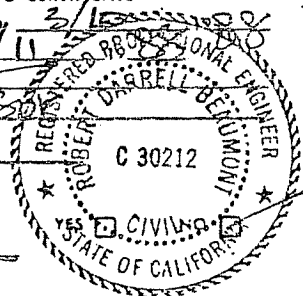
CALIFORNIA COORDINATE SYSTEM ORDER: FIRST SECOND THIRD
 STATIONS USED: NGS (USC & GS) STATE COUNTY OTHER STATION _____ STATION _____
 ZONE _____ ELEVATION _____ NORTHINGS (Y) _____ EASTINGS (X) _____

SKETCH: (Include reference tie or witness points, remarks and topo of area)



SURVEYOR'S CERTIFICATE
 THIS CORNER RECORD WAS PREPARED BY ME OR UNDER MY DIRECTION IN CONFORMANCE WITH THE LAND SURVEYORS ACT ON December 30, 1987
 SIGNED: [Signature] No. 3887
 L.S. or R.C.E. No.: 250188

COUNTY SURVEYOR'S CERTIFICATE
 THE CORNER RECORD WAS RECEIVED 3/15 AND EXAMINED AND FILED 3/11
 BY: [Signature]
 TITLE: DEPT. CLERK
 DOCUMENT No. _____
 STATEMENT ON BACK OF SHEET
EX. 3-31-88



CORNER RECORD

COUNTY OF Marin T. _____ R. _____ MERIDIAN _____ CALIFORNIA
 CORNER TYPE: GOVT. CORNER MEANDER RANCHO CONTROL OTHER
 CORNER IDENTIFICATION — DATE OF VISIT _____ 19____



CORNER — LEFT AS FOUND FOUND AND TAGGED REESTABLISHED OBLITERATED CORNER RESULT

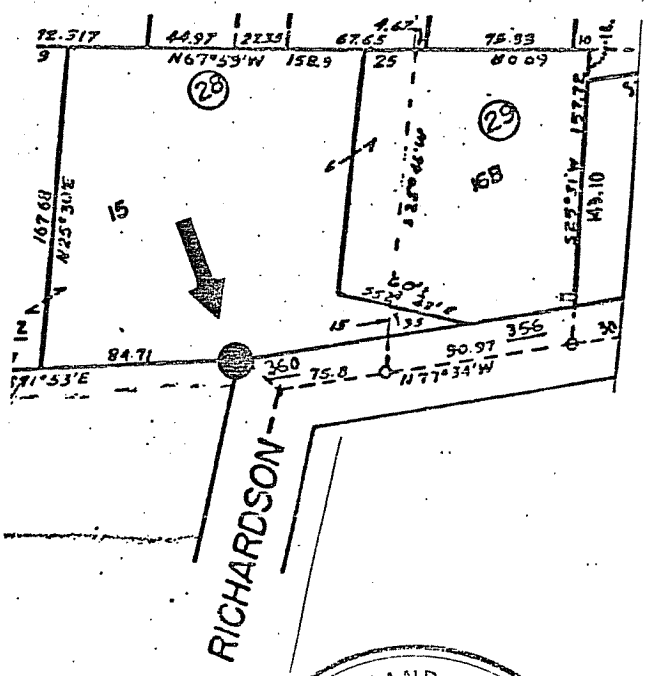
PHYSICAL DESCRIPTION OF CORNER FOUND, EVIDENCE AND METHOD USED TO IDENTIFY OR REESTABLISH
 Ptn. Lot 15 and 16B, Block 'A' Map No. 1 of Tamalpais Valley, 2 R.M. 119

PHYSICAL DESCRIPTION OF MONUMENTS REBUILT OR PERPETUATED

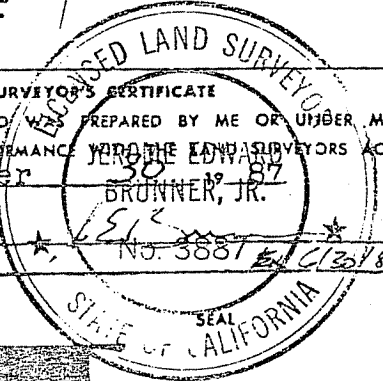
Set rebar and cap L.S. 3887

CALIFORNIA COORDINATE SYSTEM ORDER: FIRST SECOND THIRD
 STATIONS USED: NGS (USC & GS) STATE COUNTY OTHER STATION _____ STATION _____
 ZONE _____ ELEVATION _____ NORTHINGS (Y) _____ EASTINGS (X) _____

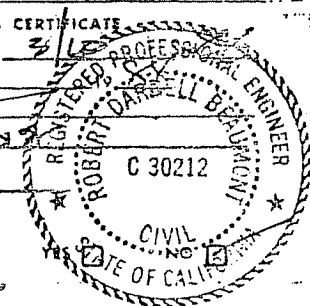
SKETCH: (Include reference tie or witness points, remarks and topo of area)



SURVEYOR'S CERTIFICATE
 THIS CORNER RECORD WAS PREPARED BY ME OR UNDER MY DIRECTION IN CONFORMANCE WITH THE LAND SURVEYORS ACT ON December 30 1987
 BY: BRUNNER, JR.
 SIGNED: [Signature]
 L.S. or R.C.E. No.: No. 3887



COUNTY SURVEYOR'S CERTIFICATE
 THE CORNER RECORD WAS RECEIVED 3/11 AND EXAMINED AND FILED 3/11
 BY: [Signature]
 TITLE: Deputy

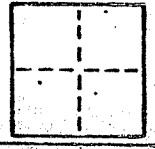


DOCUMENT No. _____
 STATEMENT ON BACK OF SHEET

ex 3-3188

CORNER RECORD

COUNTY OF Marin T. _____ R. _____ MERIDIAN _____ CALIFORNIA
 CORNER TYPE: GOVT. CORNER MEANDER RANCHO CONTROL OTHER
 CORNER IDENTIFICATION — DATE OF VISIT _____ 19____



CORNER — LEFT AS FOUND FOUND AND TAGGED REESTABLISHED OBLITERATED CORNER REBUILT

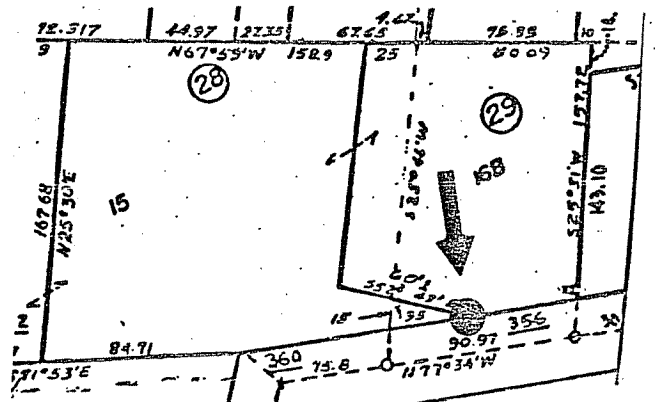
PHYSICAL DESCRIPTION OF CORNER FOUND; EVIDENCE AND METHOD USED TO IDENTIFY OR REESTABLISH
 Ptn. Lot 15 and 16B, Block 'A' Map No. 1 of Tamalpais Valley, 2 R.M. 119

PHYSICAL DESCRIPTION OF MONUMENTS REBUILT OR PERPETUATED

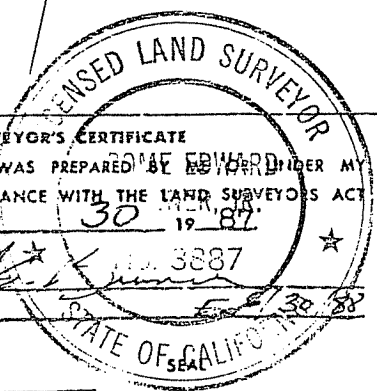
Set rebar and cap L.S. 3887.

CALIFORNIA COORDINATE SYSTEM ORDER: FIRST SECOND THIRD
 STATIONS USED: NGS (USC & GS) STATE COUNTY OTHER STATION _____ STATION _____
 ZONE _____ ELEVATION _____ NORTHINGS (Y) _____ EASTINGS (X) _____

SKETCH: (Include reference tie or witness points, remarks and topo of area)

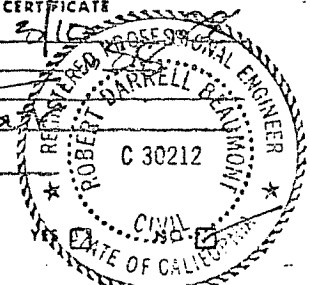


RICHARDSON



SURVEYOR'S CERTIFICATE
 THIS CORNER RECORD WAS PREPARED BY EDWARD UNDER MY DIRECTION IN CONFORMANCE WITH THE LAND SURVEYORS ACT ON December 30 1987.
 SIGNED: [Signature] 3887
 L.S. or R.C.E. No.: 3887

COUNTY SURVEYOR'S CERTIFICATE
 THE CORNER RECORD WAS RECEIVED 2/10 AND EXAMINED AND FILED BY: RDP
 TITLE: Dep Co S
 DOCUMENT No. _____
 STATEMENT ON BACK OF SHEET
EX. 8-31-88



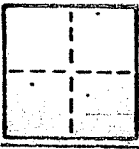
CORNER RECORD

5/6

COUNTY OF Marin T. _____ R. _____ MERIDIAN _____ CALIFORNIA

CORNER TYPE: GOV'T. CORNER MEANDER RANCHO CONTROL OTHER

CORNER IDENTIFICATION — DATE OF VISIT _____ 19____



CORNER — LEFT AS FOUND FOUND AND TAGGED REESTABLISHED OBLITERATED CORNER RESULT

PHYSICAL DESCRIPTION OF CORNER FOUND, EVIDENCE AND METHOD USED TO IDENTIFY OR REESTABLISH

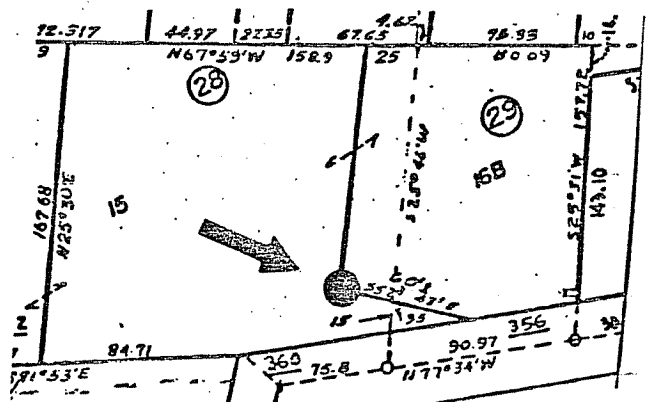
Ptn. Lot 15 and 16B, Block 'A' Map No. 1 of Tamalpais Valley, 2 R.M. 119

PHYSICAL DESCRIPTION OF MONUMENTS REBUILT OR PERPETUATED

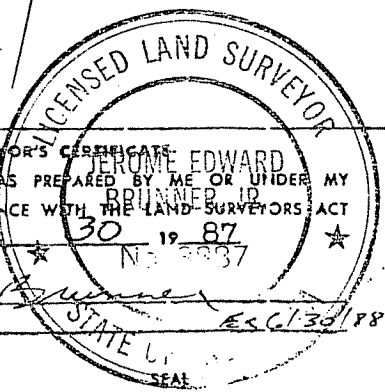
Set rebar and cap L.S. 3887.

CALIFORNIA COORDINATE SYSTEM ORDER: FIRST SECOND THIRD
STATIONS USED: NGS (USC & GS) STATE COUNTY OTHER STATION _____ STATION _____
ZONE _____ ELEVATION _____ NORTHINGS (Y) _____ EASTINGS (X) _____

SKETCH: (Include reference tie or witness points, remarks and topo of area)

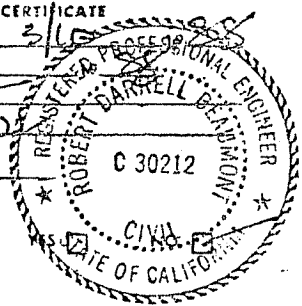


RICHARDSON



SURVEYOR'S CERTIFICATE
THIS CORNER RECORD WAS PREPARED BY ME OR UNDER MY DIRECTION IN CONFORMANCE WITH THE LAND SURVEYORS ACT ON December 30 1987
SIGNED: [Signature]
L.S. or R.C.E. No.: 3887

COUNTY SURVEYOR'S CERTIFICATE
THE CORNER RECORD WAS RECEIVED 3/10 AND EXAMINED AND FILED 3/11
BY: [Signature]
TITLE: [Signature]
DOCUMENT No. _____
STATEMENT ON BACK OF SHEET
EX. 3-31-88





JERRICO ASSOCIATES
 SUITE 27
 77 MARK DRIVE
 SAN RAFAEL, CA 94903

49-161-28

6726

CORNER RECORD

6/6

COUNTY OF Marin T. _____ R. _____ MERIDIAN _____ CALIFORNIA
 CORNER TYPE: GOVT. CORNER MEANDER RANCHO CONTROL OTHER
 CORNER IDENTIFICATION — DATE OF VISIT _____ 19____



CORNER — LEFT AS FOUND FOUND AND TAGGED REESTABLISHED OBLITERATED CORNER REBUILT

PHYSICAL DESCRIPTION OF CORNER FOUND; EVIDENCE AND METHOD USED TO IDENTIFY OR REESTABLISH

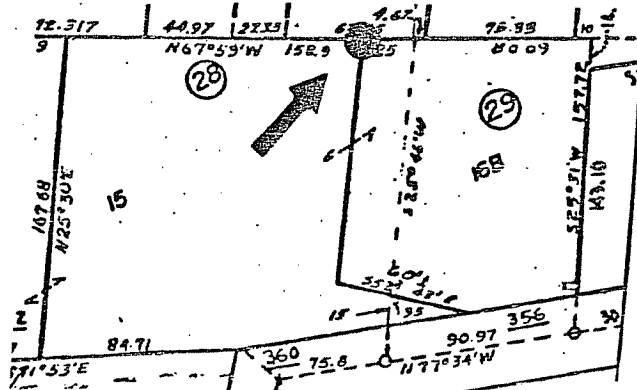
Ptn. Lot 15 and 16B, Block 'A' Map No. 1 of Tamalpais Valley, 2 R.M. 119

PHYSICAL DESCRIPTION OF MONUMENTS REBUILT OR PERPETUATED

Set rebar and cap L.S. 3887.

CALIFORNIA COORDINATE SYSTEM ORDER: FIRST SECOND THIRD
 STATIONS USED: NGS (USC & GS) STATE COUNTY OTHER STATION _____ STATION _____
 ZONE _____ ELEVATION _____ NORTHINGS (Y) _____ EASTINGS (X) _____

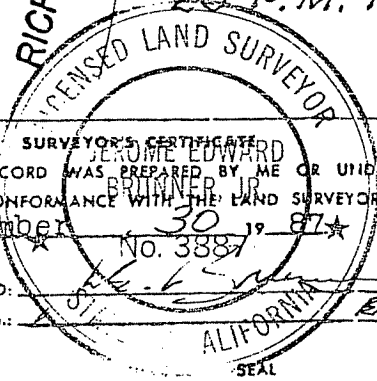
SKETCH: (Include reference tie or witness points, remarks and topo of area)



20 P.M. 17
 RICHARDSON
 LICENSED LAND SURVEYOR

SURVEYOR'S CERTIFICATE
 THIS CORNER RECORD WAS PREPARED BY ME OR UNDER MY DIRECTION IN CONFORMANCE WITH THE LAND SURVEYORS ACT ON December 30 1987
 No. 3887

SIGNED: _____
 L.S. or R.C.E. No.: _____



COUNTY SURVEYOR'S CERTIFICATE
 THE CORNER RECORD WAS RECEIVED AND EXAMINED AND FILED 3/11
 BY: RDB
 TITLE: Deed

DOCUMENT No. _____
 STATEMENT ON BACK OF SHEET
Ex. 3-31-88

