

CORNER RECORD

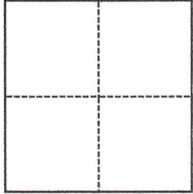
Agency Index DPW#21-031

Document Number APN 049-151-14

City of Unincorporated County of Marin, California

Brief Legal Description As shown on that Record of Survey filed in Book 2004 of Maps, at Page 107

CORNER TYPE



- Government Corner
- Meander
- Rancho
- Control
- Property
- Other

Date of Survey December 18, 2020

COORDINATES (Optional)

N. _____ E. _____

Elevation _____

Units Metric U.S. Survey Foot

Horizontal Datum _____

Zone _____ Epoch Date _____

Vertical Datum _____

Complies with Public Resources Code §§8801-8819

Complies with Public Resources Code §§8890-8902

PLS Act Ref.: 8765(d) 8771 8773 Other:

Corner/Monument: Left as found Established Rebuilt Pre-Construction

Found and tagged Reestablished Referenced Post-Construction

Narrative of corner identified and monument as found, set, reset, replaced, or removed:

See sheet #2 for description(s):

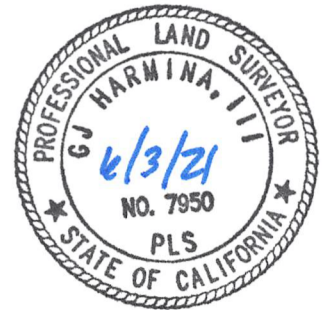
Found two iron pipes, PLS 4694 marking the southerly line. Set three line points for construction setbacks and re-set northerly corner on top of wood wall.

SURVEYOR'S STATEMENT

This Corner Record was prepared by me or under my direction in conformance with

the Professional Land Surveyors' Act on December 22, 2020

Signed [Signature] P.L.S. or R.C.E. No. 7950



COUNTY SURVEYOR'S STATEMENT

This Corner Record was received 01/05/2021

and examined and filed 06/10/2021

Signed T. W. Park P.L.S. or R.C.E. No. 8176

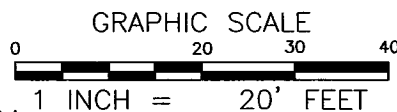
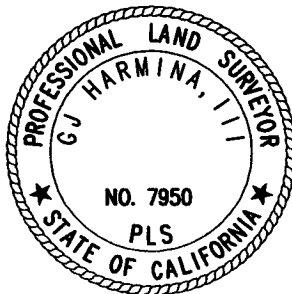
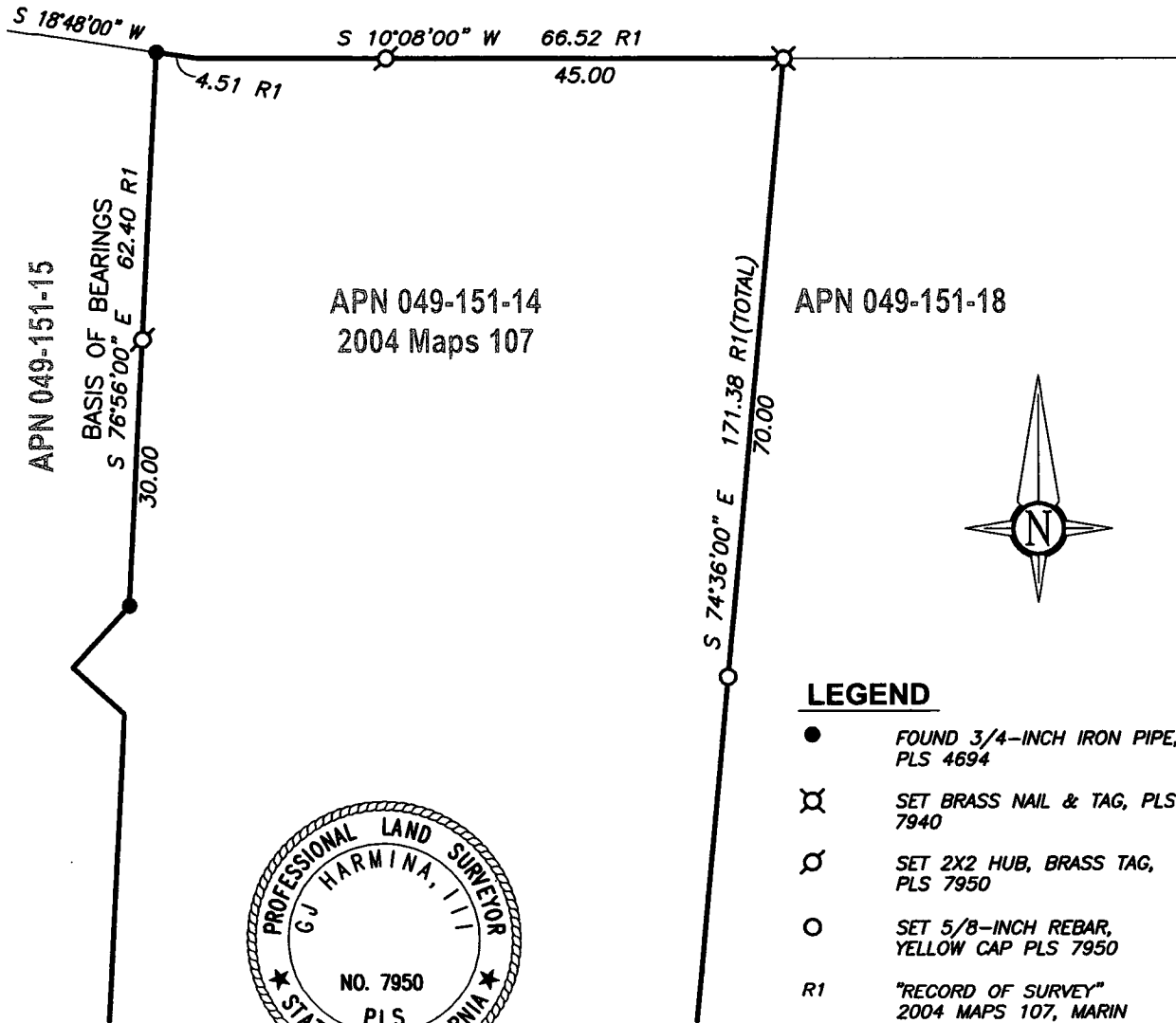
Title COUNTY SURVEYOR

County Surveyor's Comment



Green Glen Way

(40 FEET WIDE)



J:\19152-Schneider\19152CR.dwg

1031Survey, Inc.

High Definition Surveying
 1857 Rainier Circle, Petaluma, California, 94954
 415-827-6370