

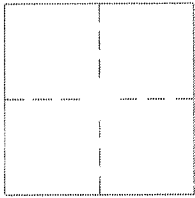
CORNER RECORD

Document Number APN 49-132-16

City of Mill Valley

County of Marin, California

Brief Legal Description Lands of Ambrosiano, Lying within the City of Mill Valley, A.P. No. 49-132-16



CORNER TYPE

COORDINATES
(Optional)

Government Corner Control
Meander Property
Rancho Other
Date of Survey June 21, 2013

N. _____
E. _____
Zone _____ Datum _____
Elev. _____

Corner— Left as Found Found and tagged Established Reestablished Rebuilt

Identification and type of corner found: Evidence used to identify or procedure used to establish or reestablish the corner:
Set monuments at record bearings and distances from found monumentation as shown on
Record of Survey, filed in Book 2003 of Maps, page 113, Marin County Records
See diagram on reverse side of this form (page 2 of 2).

A description of the physical condition of the monument as found and as set or reset: Found monuments:
3/4" IRON PIPE- TAGGED PLS 5461
NAIL AND TAG PLS 4206 IN CONCRETE

Set monument: 3/4" Iron Pipe Tagged LS 5092.

SURVEYOR'S STATEMENT

This Corner Record was prepared by me or under my direction in conformance with
the Land Surveyors' Act on June 25, 2013.

Signed Mike Buti LS 5092



COUNTY SURVEYOR'S STATEMENT

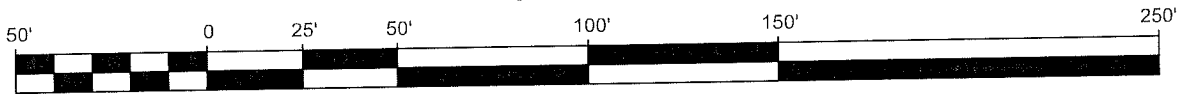
This Corner Record was received June 28, 2013 and examined
and filed July 29th 2013.

Signed Richard G. Simonitch Title DEPUTY CO. SURVEYOR

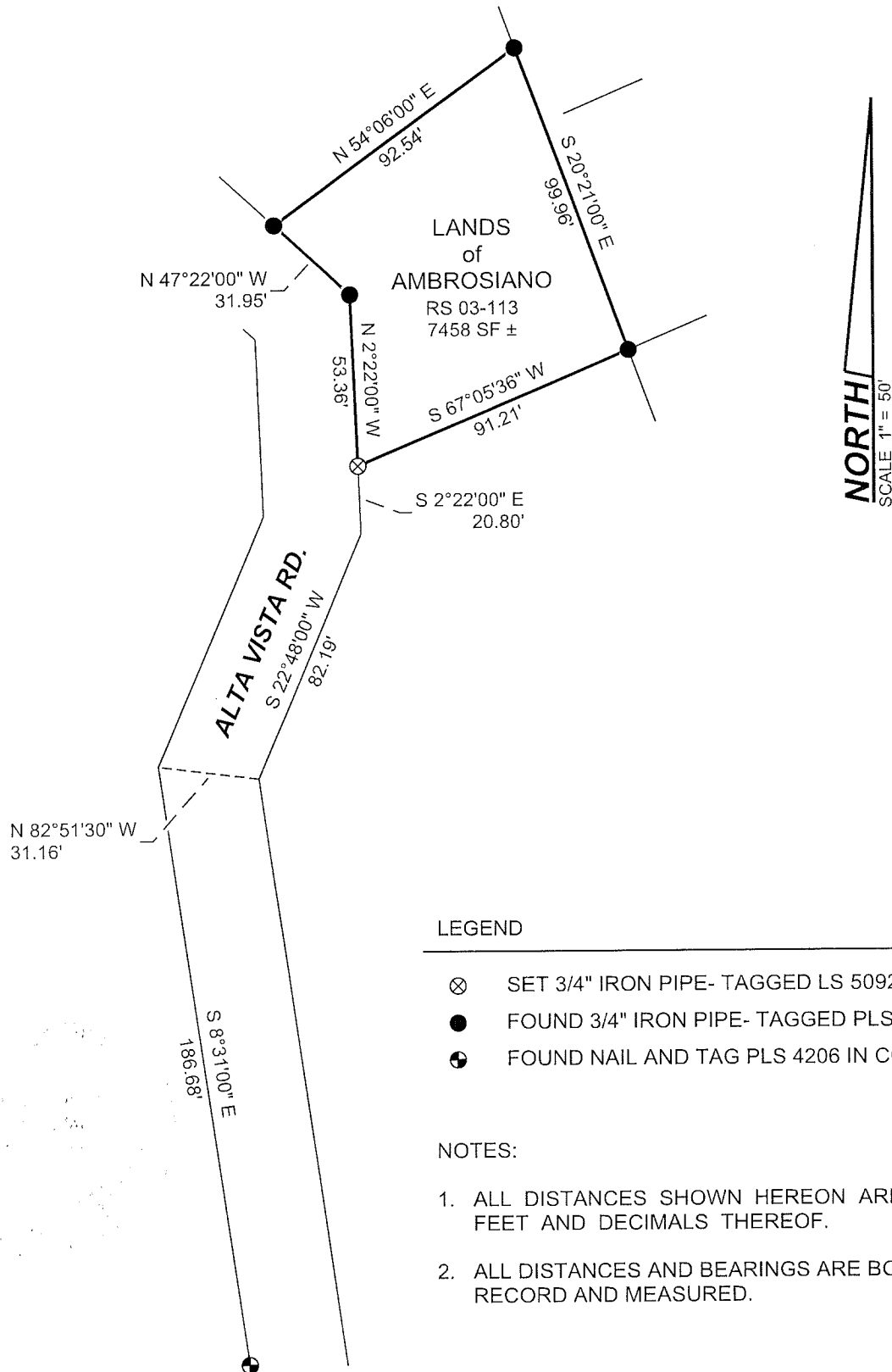


County Surveyor's Comment

Graphic Scale



1" = 50'



LEGEND

- ⊗ SET 3/4" IRON PIPE- TAGGED LS 5092
- FOUND 3/4" IRON PIPE- TAGGED PLS 5461
- ⊕ FOUND NAIL AND TAG PLS 4206 IN CONCRETE

NOTES:

1. ALL DISTANCES SHOWN HEREON ARE IN FEET AND DECIMALS THEREOF.
2. ALL DISTANCES AND BEARINGS ARE BOTH RECORD AND MEASURED.