

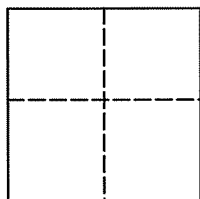
Lands of Vallance
Job: # 06-985

CORNER RECORD

Document Number 049-102-09

City of Mill Valley, County of Marin, California

Brief Legal Description: Being a portion of Lot 4, Block 2, of that certain map entitled "Subdivision No. 2, Tamalpais Valley", recorded in Volume 5 of Maps at Page 3, Marin County Records.



CORNER TYPE

COORDINATES (Optional)

Government Corner Control

Meander Property

Rancho Other

Date of Survey December 3, 2010

N _____

E _____

Zone _____ NAD27 NAD83

NAD 83 Epoch _____

Elev. _____

Vert. Datum: NGVD29 NAVD88

Meas. Units: Metric Imperial

Corner - Left as found Found and tagged Established Reestablished Rebuilt

Identification and type of corner found: Evidence used to identify or procedure used to establish or reestablish the corner:
See Page 2 of 2

A description of the physical condition of the monument as found and as set or reset:
See Page 2 of 2

SURVEYOR'S STATEMENT

This Corner Record was prepared by me or under my direction in conformance with

The Land Surveyor's Act on December 3, 2010

Signed [Signature] P.L.S. 6649



COUNTY SURVEYOR'S STATEMENT

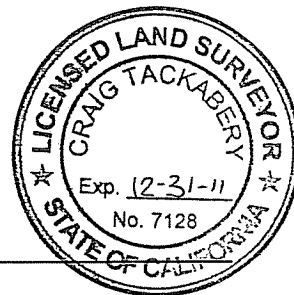
This Corner Record was received DECEMBER 9, 2010

and examined and filed JANUARY 12, 2011

Signed [Signature] P.L.S.-or-P.C.E. No. 7128

Title COUNTY SURVEYOR

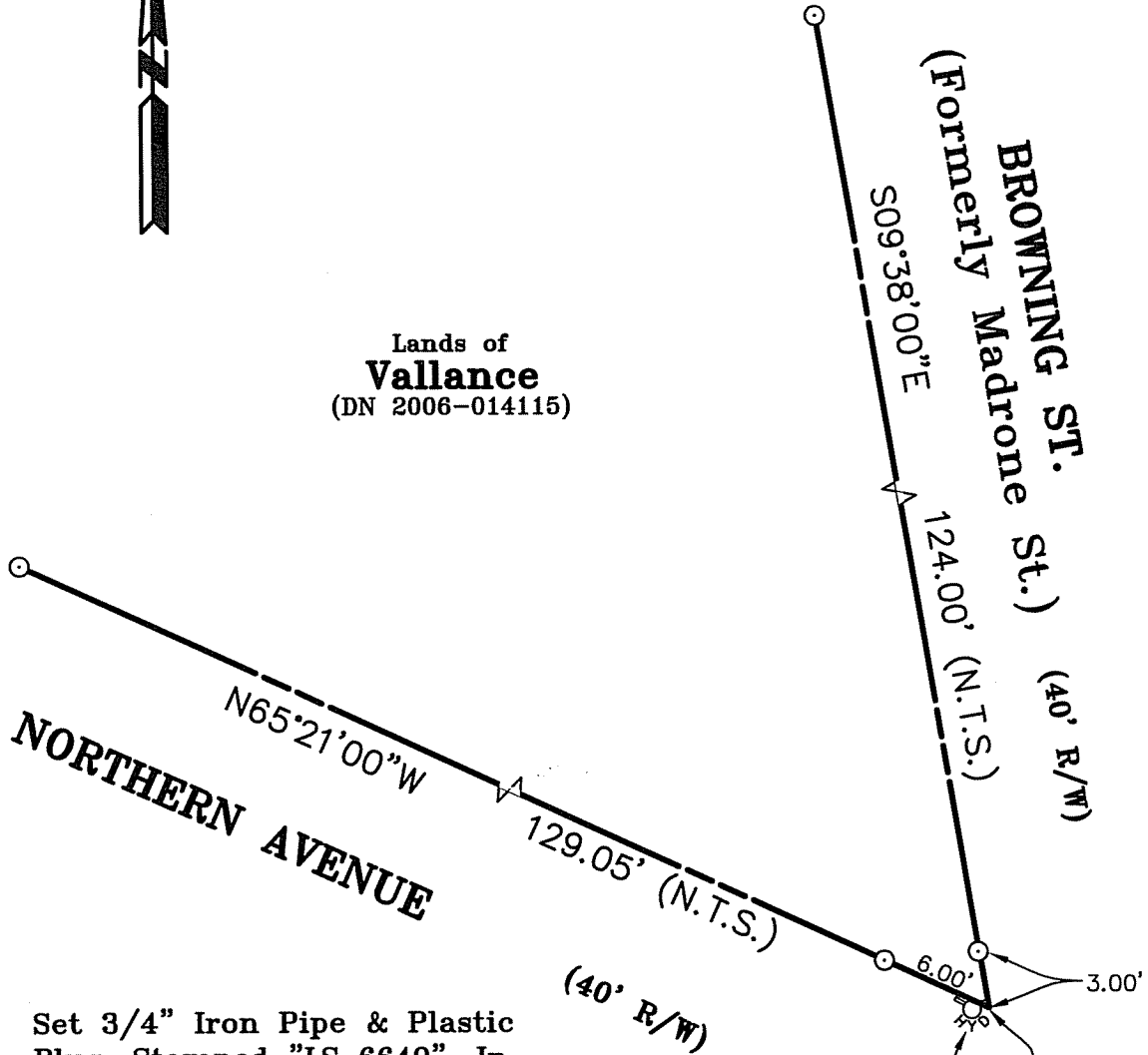
County Surveyors' Comment _____



All distances shown are in feet and decimals thereof



Lands of
Vallance
(DN 2006-014115)



⊙ Set 3/4" Iron Pipe & Plastic Plug, Stamped "LS 6649", In September 2006

N.T.S. Not To Scale

Fire Hydrant

Iron Pipe Shown Set at Corner on 2007 Maps 19, Offset Pipes Actually Set Due to Location of Fire Hydrant



12-3-10

Corner Record Lands of Vallance

(DN 2006-014115)

Mill Valley

Marin County

California

Scale: 1" = 10'

December 3, 2010

L.A. Stevens & Associates, Inc.

Professional Land Surveyors • (415) 382-7713

7 Commercial Blvd., Suite 1 • Novato, CA 94949

Job # 06-985

Page 2 Of 2

Lawrence A. Stevens, PLS 6649