

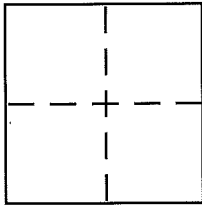
**CORNER RECORD**

Document Number APN 49-071-04

City of MILL VALLEY

County of MARIN, California

Brief Legal Description LANDS OF HALLS AS SHOWN ON 2009 R.S. 115 FILED 8/7/2009



**CORNER TYPE**

Government Corner  Control   
Meander  Property   
Rancho  Other   
Date of Survey 3/23/13

**COORDINATES (Optional)**

N. \_\_\_\_\_  
E. \_\_\_\_\_  
Zone \_\_\_\_\_ NAD27  NAD83   
NAD83 Epoch \_\_\_\_\_  
Elev. \_\_\_\_\_  
Vert. Datum: NGVD29  NAVD88   
Meas. Units: Metric  Imperial

Corner - Left as found  Found and tagged  Established  Reestablished  Rebuilt

Identification and type of corner found: Evidence used to identify or procedure used to establish or reestablish the corner:  
FOUND 5/8" REBAR WITH TAGS MARKED "PLS 7779" PER 2009 RS 115  
AT THE LOCATIONS AS SHOWN ON SHEET 2.

A description of the physical condition of the monument as found and as set or reset: \_\_\_\_\_

PROPERTY CORNERS SET ARE AS DESCRIBED IN THE LEGEND ON SHEET 2.

**SURVEYOR'S STATEMENT**

This Corner Record was prepared by me or under my direction in conformance with the Land Surveyor's Act on April 14 2013.  
Signed Daniel J. Westover P.L.S. or P.C.E. No. 7779

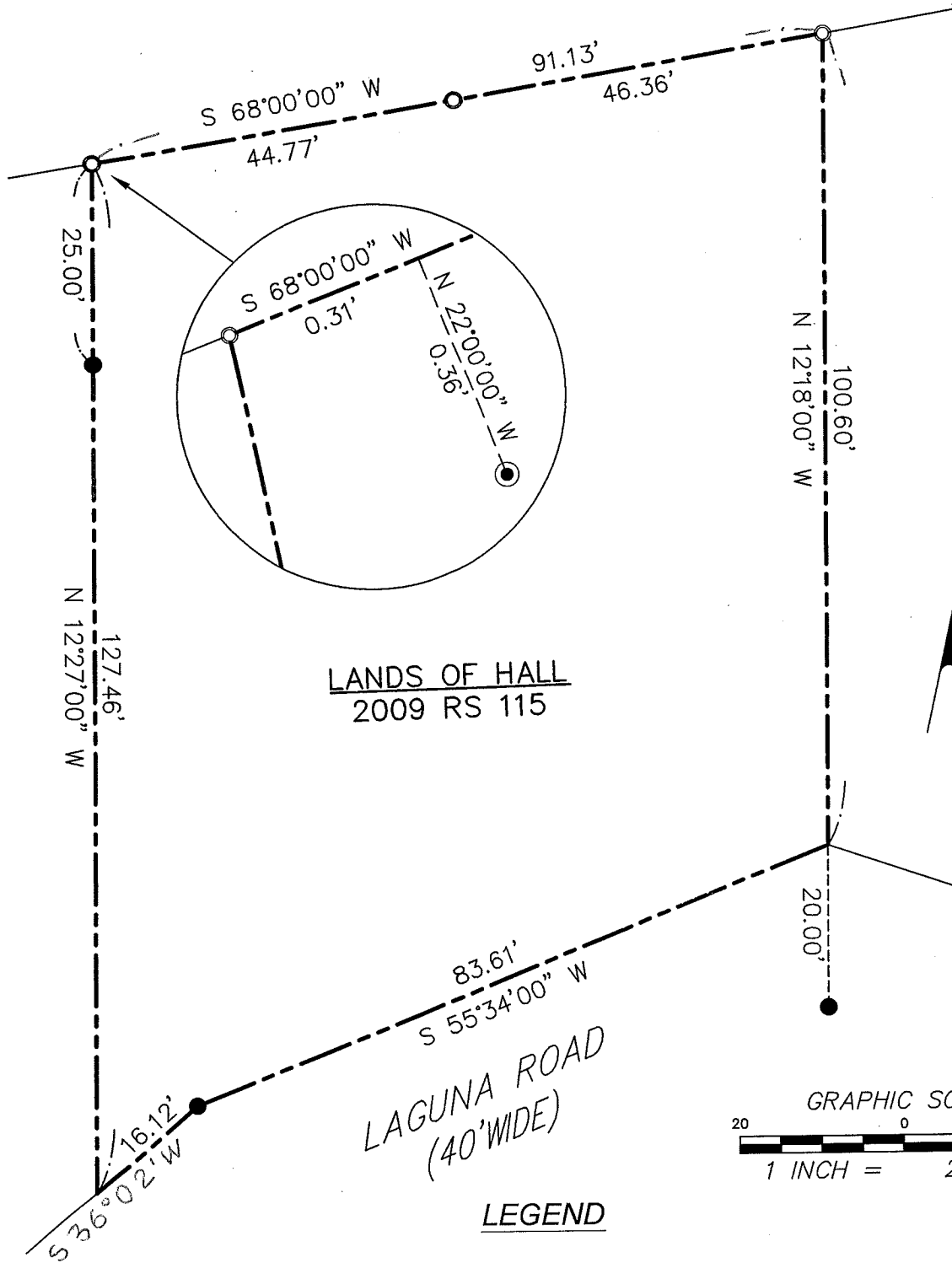


**COUNTY SURVEYOR'S STATEMENT**

This Corner Record was received MAY 6, 2013  
and examined and filed JUNE 14, 2013  
Signed Richard G. Simonitch P.L.S. or P.C.E. No. 7821  
Title DEPUTY CO. SURVEYOR

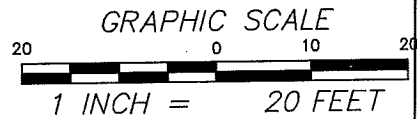


County Surveyor's Comment \_\_\_\_\_



LANDS OF HALL  
2009 RS 115

LAGUNA ROAD  
(40' WIDE)



LEGEND

- FOUND  $\frac{5}{8}$ " REBAR WITH TAG "PLS 7779" PER 2009 RS 115
- ⊙ FOUND  $\frac{3}{4}$ " IRON PIPE WITH TAG "RCE10734" PER 13 RS 84
- SET  $\frac{1}{2}$ " REBAR WITH TAG MARKED "PLS 7779"
- PROPERTY LINE