

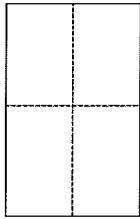
CORNER RECORD

Document Number 049-063-29

City of Mill Valley

County of Marin County, California

Brief Legal Description Lot 27, as shown on map of "Tam Terrace", filed in Book 12 of maps, at page 36-2, Marin County Records.



CORNER TYPE

Government Corner Control
Meaneder Property
Rancho Other
Date of Survey 08/26/15

COORDINATES (Optional)

N. _____
E. _____
Zone _____ NAD27 NAD83
NAD83 Epoch _____
Elev. _____
Vert. Datum: NGVD29 NAVD88
Meas. Units: Metric Imperial

Corner - Left as found Found and tagged Established Reestablished Rebuilt

Identification and type of corner found: Evidence used to identify or procedure used to establish or reestablish the corner:

Found Standard City Street Monuments per 12 Maps 36-2 to be in good condition, record position and used to reestablish property corners for Lot 27.

A description of the physical condition of the monument as found and as set or reset: _____

Set (4) 1/2" iron pipes tagged LS7237, one at the most westerly corner was a 3' witness corner (see attached exhibit).

SURVEYOR'S STATEMENT

This Corner Record was prepared by me or under my direction in conformance with the Land Surveyor's Act on Sept. 18th 2015

Signed Michael E. Ford P.L.S. or R.C.E. No. 7237



COUNTY SURVEYOR'S STATEMENT

This Corner Record was received SEPTEMBER 23, 2015

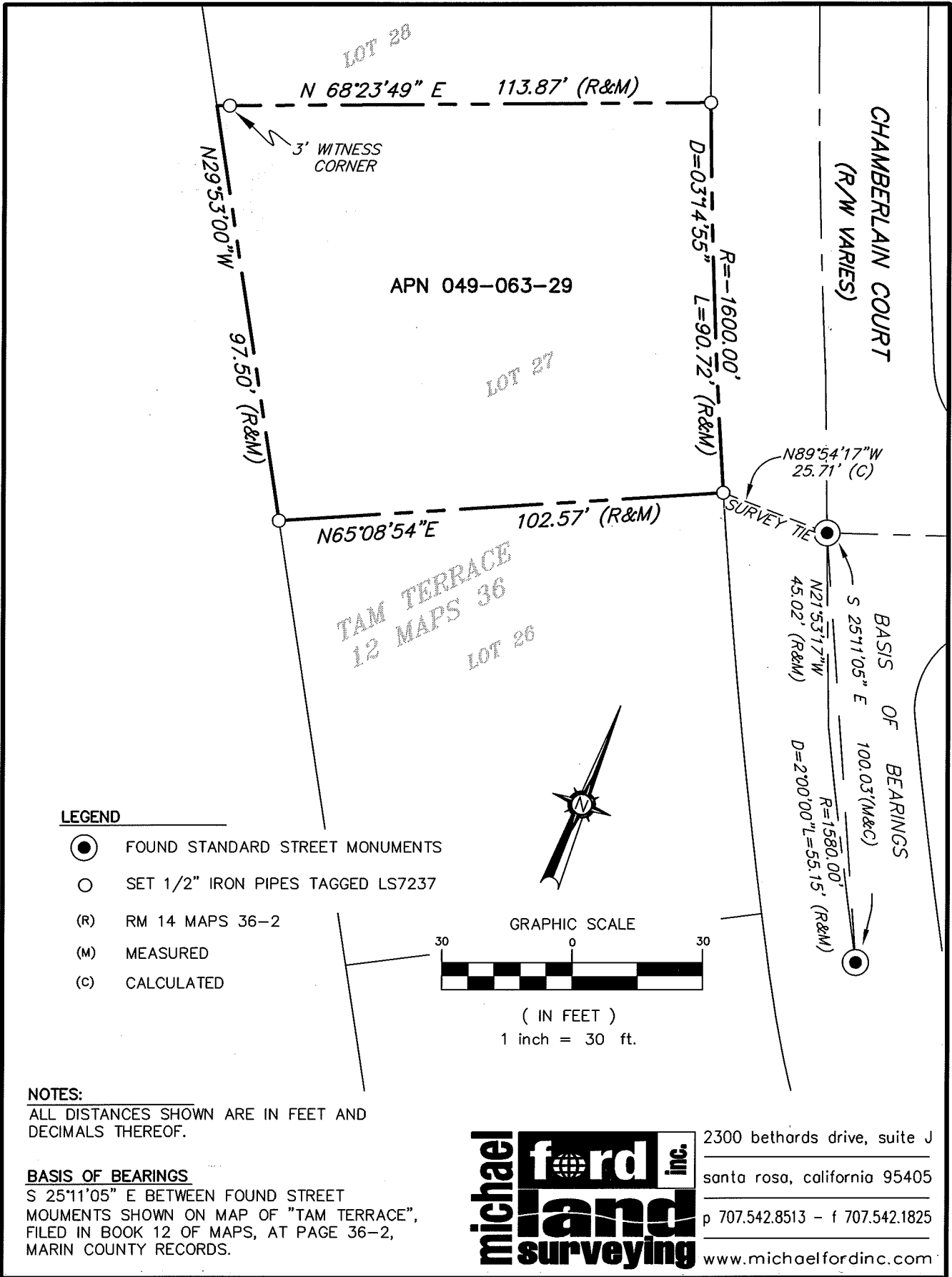
and examined and filed OCTOBER 28, 2015

Signed Richard G. Simonitch P.L.S. or R.C.E. No. 7821

Title County Surveyor



County Surveyor's Comment



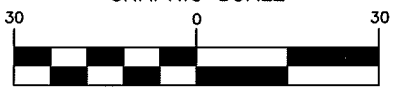
APN 049-063-29

TAM TERRACE
12 MAPS 36

LEGEND

- FOUND STANDARD STREET MONUMENTS
- SET 1/2" IRON PIPES TAGGED LS7237
- (R) RM 14 MAPS 36-2
- (M) MEASURED
- (C) CALCULATED

GRAPHIC SCALE



(IN FEET)
1 inch = 30 ft.

NOTES:

ALL DISTANCES SHOWN ARE IN FEET AND DECIMALS THEREOF.

BASIS OF BEARINGS

S 25°11'05" E BETWEEN FOUND STREET MOUMENTS SHOWN ON MAP OF "TAM TERRACE", FILED IN BOOK 12 OF MAPS, AT PAGE 36-2, MARIN COUNTY RECORDS.

michael ford inc.
land surveying

2300 bethards drive, suite J
santa rosa, california 95405
p 707.542.8513 - f 707.542.1825
www.michaelfordinc.com