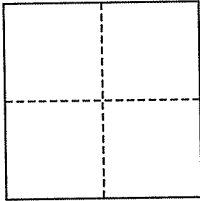


CORNER RECORD

City of Mill Valley

Document Number AP# 049-063-22
County of Marin, California

Brief Legal Description Lot 20, 12 RM 36



CORNER TYPE

Government Corner Control
Meander Property
Rancho Other
Date of Survey May 21, 2009

COORDINATES (Optional)

N. _____
E. _____
Zone _____ NAD27 NAD83
NAD83 Epoch _____
Elev. _____
Vert. Datum: NGVD29 NAVD88
Meas. Units: Metric Imperial

Corner- Left as found Found and tagged Established Reestablished Rebuilt

Identification and type of corner found: Evidence used to identify or procedure used to establish or reestablish the corner:
Found Standard Street Monument and Iron Pipe per 12 RM 36, as shown.

A description of the physical condition of the monument as found and as set or reset: Set Rebar on Building Setback lines as shown.

SURVEYOR'S STATEMENT

This corner Record was prepared by me or under my direction in conformance with the Land Surveyor's Act on May 26, 2009

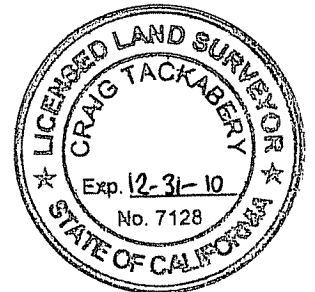
Signed [Signature] P.L.S. or R.C.E. No. 30465



COUNTY SURVEYOR'S STATEMENT

This Corner Record was received JUNE 2, 2009
and examined and filed JULY 1, 2009

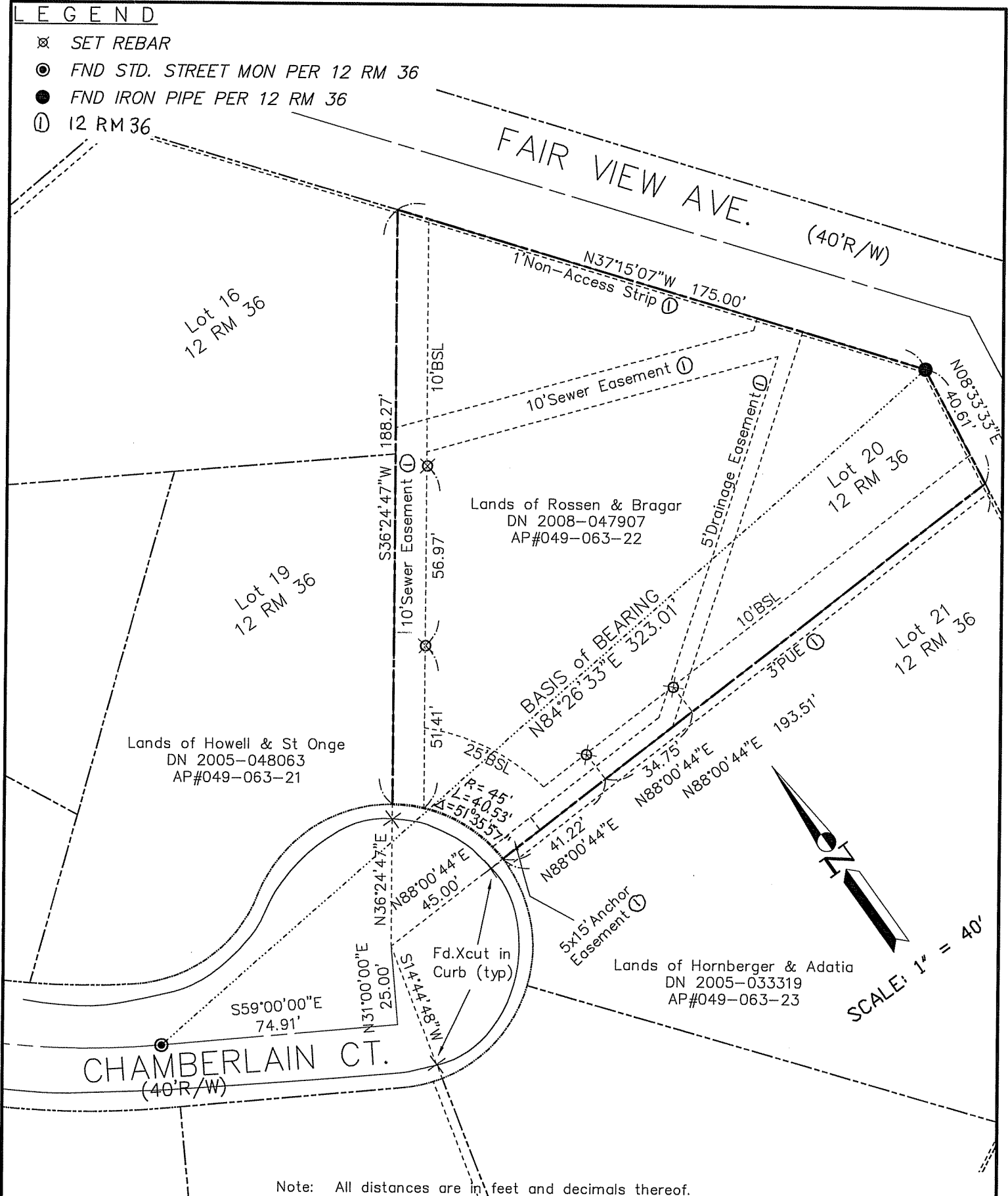
Signed [Signature] P.L.S. or R.C.E. No. 7128
Title COUNTY SURVEYOR



County Surveyor's Comment _____

LEGEND

- ⊗ SET REBAR
- ⊙ FND STD. STREET MON PER 12 RM 36
- FND IRON PIPE PER 12 RM 36
- ① 12 RM 36



Note: All distances are in feet and decimals thereof.

SHEET	1	OF	1
SCALE:	1" = 40'	DESIGN:	PR
DATE:	May 2009	DRAWN:	PR
FILE:	2008-100	CHECKED:	J.L.H.

J.L. ENGINEERING
 CIVIL ENGINEERS-LAND SURVEYORS
 1539 4th ST., SAN RAFAEL, CA. 94901 (415) 457-6647

Corner Record

Lands of Rossen & Bragar - 885 Chamberlain CT.
 APN 049-063-22, Mill Valley, Marin County, CA