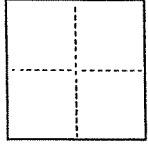


(For County Use Only)

### CORNER RECORD

COUNTY OF MARIN T.          R.          MERIDIAN CALIFORNIA  
 CORNER TYPE: GOV'T. CORNER  MEANDER  RANCHO  CONTROL  OTHER   
 CORNER IDENTIFICATION — DATE OF VISIT          19        



*AP# 49-043-10*

CORNER — LEFT AS FOUND  FOUND AND TAGGED  REESTABLISHED OBLITERATED CORNER  REBUILT

PHYSICAL DESCRIPTION OF CORNER FOUND; EVIDENCE AND METHOD USED TO IDENTIFY OR REESTABLISH

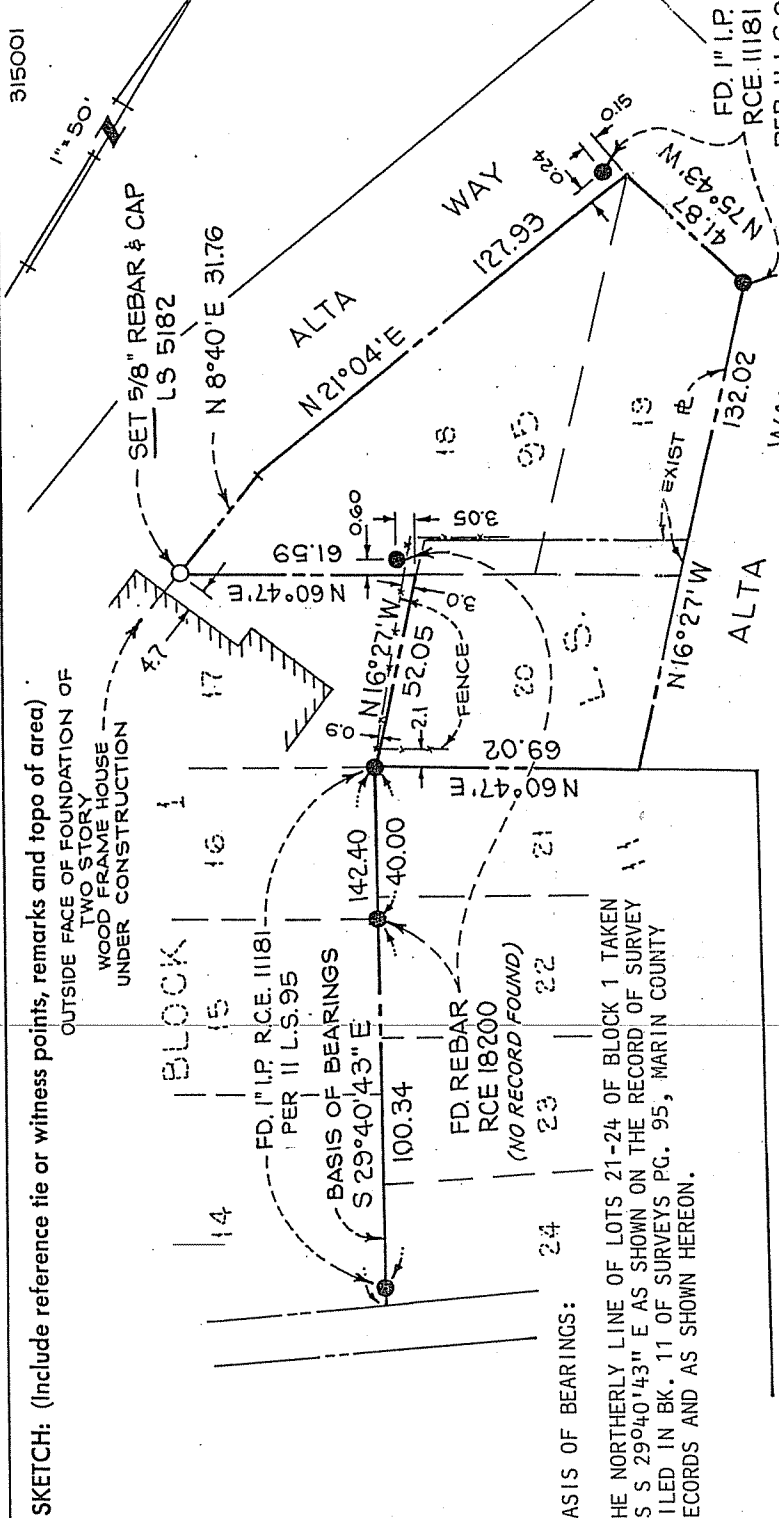
● FOUND AS NOTED

PHYSICAL DESCRIPTION OF MONUMENTS REBUILT OR PERPETUATED

○ SET 5/8" REBAR & PLASTIC CAP, L.S. 5182

CALIFORNIA COORDINATE SYSTEM ORDER: FIRST  SECOND  THIRD  STATION           
 STATIONS USED: NGS (USC & GS)  COUNTY  OTHER  EASTINGS (X)           
 ZONE          ELEVATION          NORTHINGS (Y)         

(Fold)



SKETCH: (Include reference tie or witness points, remarks and topo of area)

OUTSIDE FACE OF FOUNDATION OF TWO STORY WOOD FRAME HOUSE UNDER CONSTRUCTION

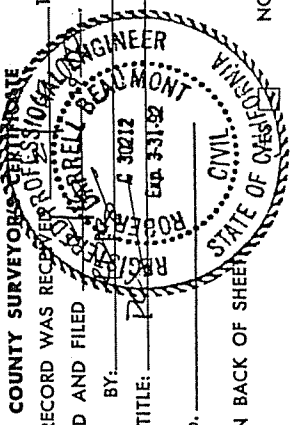
BASIS OF BEARINGS:  
 THE NORTHERLY LINE OF LOTS 21-24 OF BLOCK 1 TAKEN AS S 29°40'43" E AS SHOWN ON THE RECORD OF SURVEY FILED IN BK. 11 OF SURVEYS PG. 95, MARIN COUNTY RECORDS AND AS SHOWN HEREON.

BROWNING STREET (PALMA WAY)

**SURVEYOR'S CERTIFICATE**  
 THIS CORNER RECORD WAS PREPARED BY ME OR UNDER MY DIRECTION IN CONFORMANCE WITH THE LAND SURVEYORS ACT ON FEBRUARY 8, 1990

SIGNED: *Alan C. Royce*

L.S. or R.C.E. No.: L.S. 5182  
 LICENSE EXPIRES: 6/30/91



COUNTY SURVEYORS' CERTIFICATE  
 THE CORNER RECORD WAS RECEIVED BY ME OR UNDER MY DIRECTION AND EXAMINED AND FILED IN THE PUBLIC RECORDS OF MARIN COUNTY, CALIFORNIA, ON FEBRUARY 8, 1990  
 BY: *Alan C. Royce*  
 TITLE: PLANS  
 DOCUMENT NO.           
 STATEMENT ON BACK OF SHEET NO.