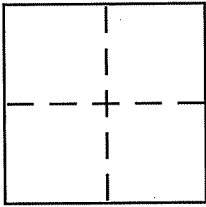


**CORNER RECORD**

Document Number 049-043-03  
City of MILL VALLEY County of MARIN, California

Brief Legal Description LOTS 21 + 22, BOOK 5 RECORD MAPS PAGE 5, MCR



**CORNER TYPE**

Government Corner  Control   
Meander  Property   
Rancho  Other   
Date of Survey JULY 28, 2009

**COORDINATES (Optional)**

N. \_\_\_\_\_  
E. \_\_\_\_\_  
Zone \_\_\_\_\_ NAD27  NAD83   
NAD83 Epoch \_\_\_\_\_  
Elev. \_\_\_\_\_  
Vert. Datum: NGVD29  NAVD88   
Meas. Units: Metric  Imperial

Corner - Left as found  Found and tagged  Established  Reestablished  Rebuilt

Identification and type of corner found: Evidence used to identify or procedure used to establish or reestablish the corner:

SEE SHEET 2

A description of the physical condition of the monument as found and as set or reset:

SEE SHEET 2

**SURVEYOR'S STATEMENT**

This Corner Record was prepared by me or under my direction in conformance with the Land Surveyor's Act on AUGUST 21 2009

Signed [Signature] P.L.S. or R.C.E. No. 7950



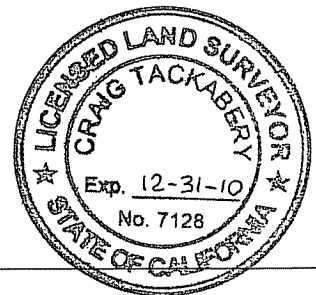
**COUNTY SURVEYOR'S STATEMENT**

This Corner Record was received AUGUST 27, 2009

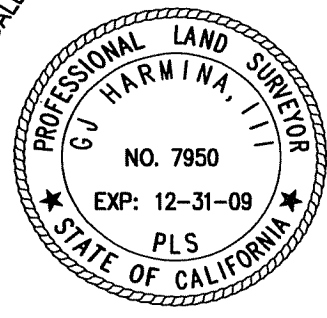
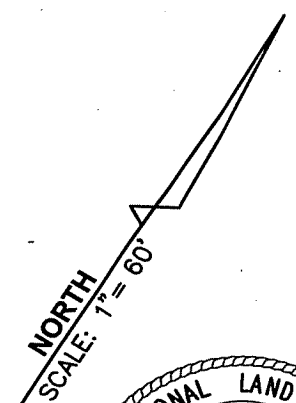
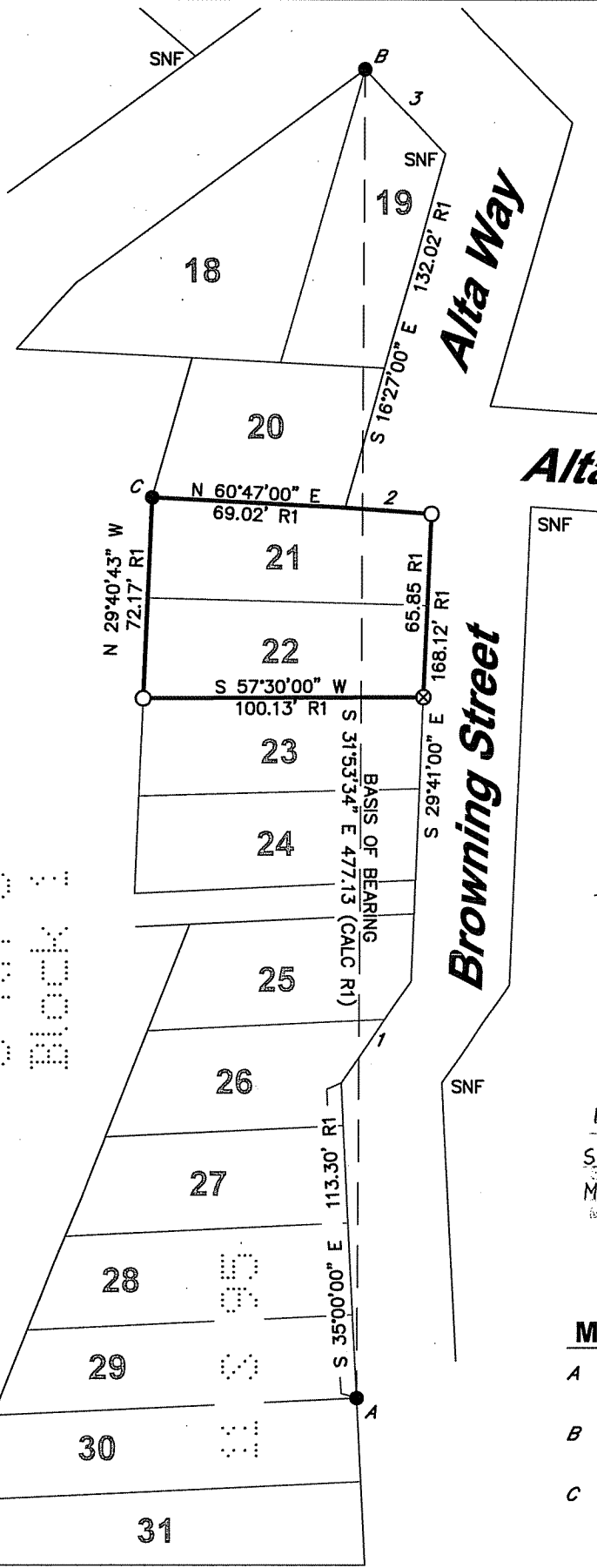
and examined and filed SEPTEMBER 9, 2009

Signed [Signature] P.L.S. or R.C.E. No. 7128

Title COUNTY SURVEYOR



County Surveyor's Comment \_\_\_\_\_



**COURSE DATA**

|   |               |           |
|---|---------------|-----------|
| 1 | S 01°54'00" W | 43.93' R1 |
| 2 | N 61°52'00" E | 31.00' R1 |
| 3 | S 75°43'00" E | 41.87' R1 |

**LEGEND**

- FOUND MONUMENT AS NOTED
- SET 5/8" REBAR, CAPPED PLS 7950
- ⊗ SET RAILROAD SPIKE, STAMPED PLS 7590
- R1 RECORD OF SURVEY, 11 S 95, MCR
- ID INSIDE DIAMETER
- SNF SEARCHED, NOT FOUND
- MCR MARIN COUNTY RECORDS

**MONUMENT DESIGNATIONS**

- A FOUND 5/8" REBAR, NO TAG,
- B FOUND 1" ID IRON PIPE, TAGGED RCE 11181
- C FOUND 1" ID IRON PIPE, NO TAG,

15  
14  
13  
12  
11  
10  
9  
8  
7  
6  
5  
4  
3  
2  
1  
Block 1