

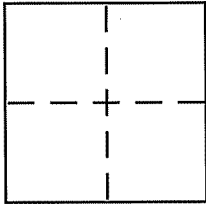
CORNER RECORD

Document Number 049-043-03

City of MILL VALLEY

County of MARIN, California

Brief Legal Description LOTS 21 & 22, BOOK 5 RECORD MAPS PAGES, MCR



CORNER TYPE

Government Corner Control
Meander Property
Rancho Other
Date of Survey NOVEMBER 9, 2009

COORDINATES (Optional)

N. _____
E. _____
Zone _____ NAD27 NAD83
NAD83 Epoch _____
Elev. _____
Vert. Datum: NGVD29 NAVD88
Meas. Units: Metric Imperial

Corner - Left as found Found and tagged Established Reestablished Rebuilt

Identification and type of corner found: Evidence used to identify or procedure used to establish or reestablish the corner:

SEE SHEET 2

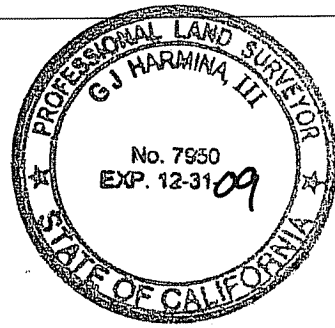
A description of the physical condition of the monument as found and as set or reset:

SEE SHEET 2

SURVEYOR'S STATEMENT

This Corner Record was prepared by me or under my direction in conformance with the Land Surveyor's Act on NOVEMBER 26 2009

Signed [Signature] P.L.S or R.C.E. No. 7950



COUNTY SURVEYOR'S STATEMENT

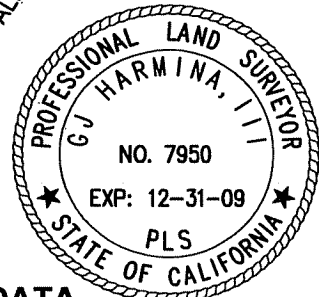
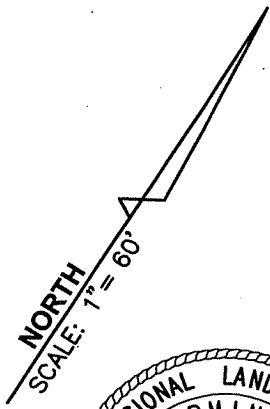
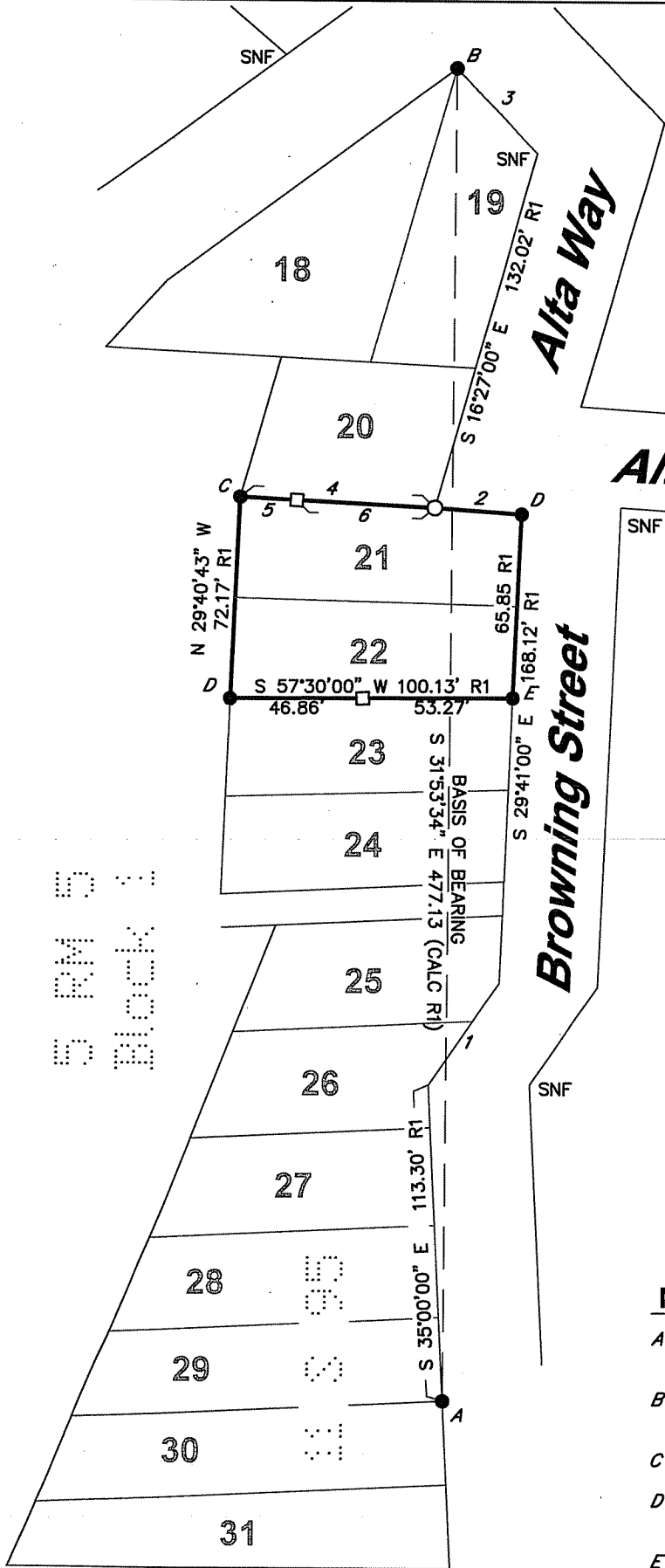
This Corner Record was received NOVEMBER 30, 2009 and examined and filed JANUARY 5, 2010

Signed [Signature] P.L.S or R.C.E. No. 7128

Title COUNTY SURVEYOR

County Surveyor's Comment _____





Alta Way

Browning Street

COURSE DATA

1	S 01°54'00" W	43.93' R1
2	N 61°52'00" E	31.00' R1
3	S 75°43'00" E	41.87' R1
4	N 60°47'00" E	69.02' R1
5	N 60°47'00" E	20.02'
6	N 60°47'00" E	49.00' R1

LEGEND

- FOUND MONUMENT AS NOTED
- SET 5/8" REBAR, CAPPED PLS 7950
- SET 2"x2" WOODEN HUB WITH BRASS NAIL AND TAG, STAMPED PLS 7950
- R1 RECORD OF SURVEY, 11 S 95, MCR
- ID INSIDE DIAMETER
- SNF SEARCHED, NOT FOUND
- MCR MARIN COUNTY RECORDS

MONUMENT DESIGNATIONS

- A FOUND 5/8" REBAR, NO TAG, PER R1
- B FOUND 1" ID IRON PIPE, TAGGED RCE 11181 PER R1
- C FOUND 1" ID IRON PIPE, NO TAG, PER R1
- D FOUND 5/8" REBAR, TAGGED PLS 7950 PER PRV. COR.REC.
- E FOUND RAILROAD SPIKE, STAMPED PLS 7950 PER PRV COR.REC.

Block 1
 Lot 18-31