

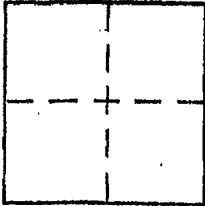
CORNER RECORD

Document Number APN 49-032-14

City of MILL VALLEY

County of MARIN, California

Brief Legal Description APN 049-032-14, LOT 31, 12RM36



CORNER TYPE

Government Corner Control
Meander Property
Rancho Other
Date of Survey _____

COORDINATES (Optional)

N. _____
E. _____
Zone _____ NAD27 NAD83
NAD83 Epoch _____
Elev. _____
Vert. Datum: NGVD29 NAVD88
Meas. Units: Metric Imperial

Corner -- Left as found Found and tagged Established Reestablished Rebuilt

Identification and type of corner found: Evidence used to identify or procedure used to establish or reestablish the corner:

FOUND STANDARD STREET MONUMENTS PER 12RM36
FOUND I.P.S. PER 12 RM 36.

A description of the physical condition of the monument as found and as set or reset:

SET I.P.S AS SHOWN PER 12 RM 36.

SURVEYOR'S STATEMENT

This Corner Record was prepared by me or under my direction in conformance with the Land Surveyor's Act on JUNE 14 2005

Signed [Signature] P.L.S or R.C.E. No. 30465



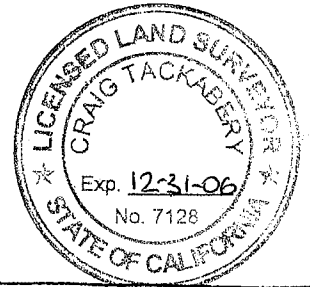
COUNTY SURVEYOR'S STATEMENT

This Corner Record was received OCTOBER 20, 2005

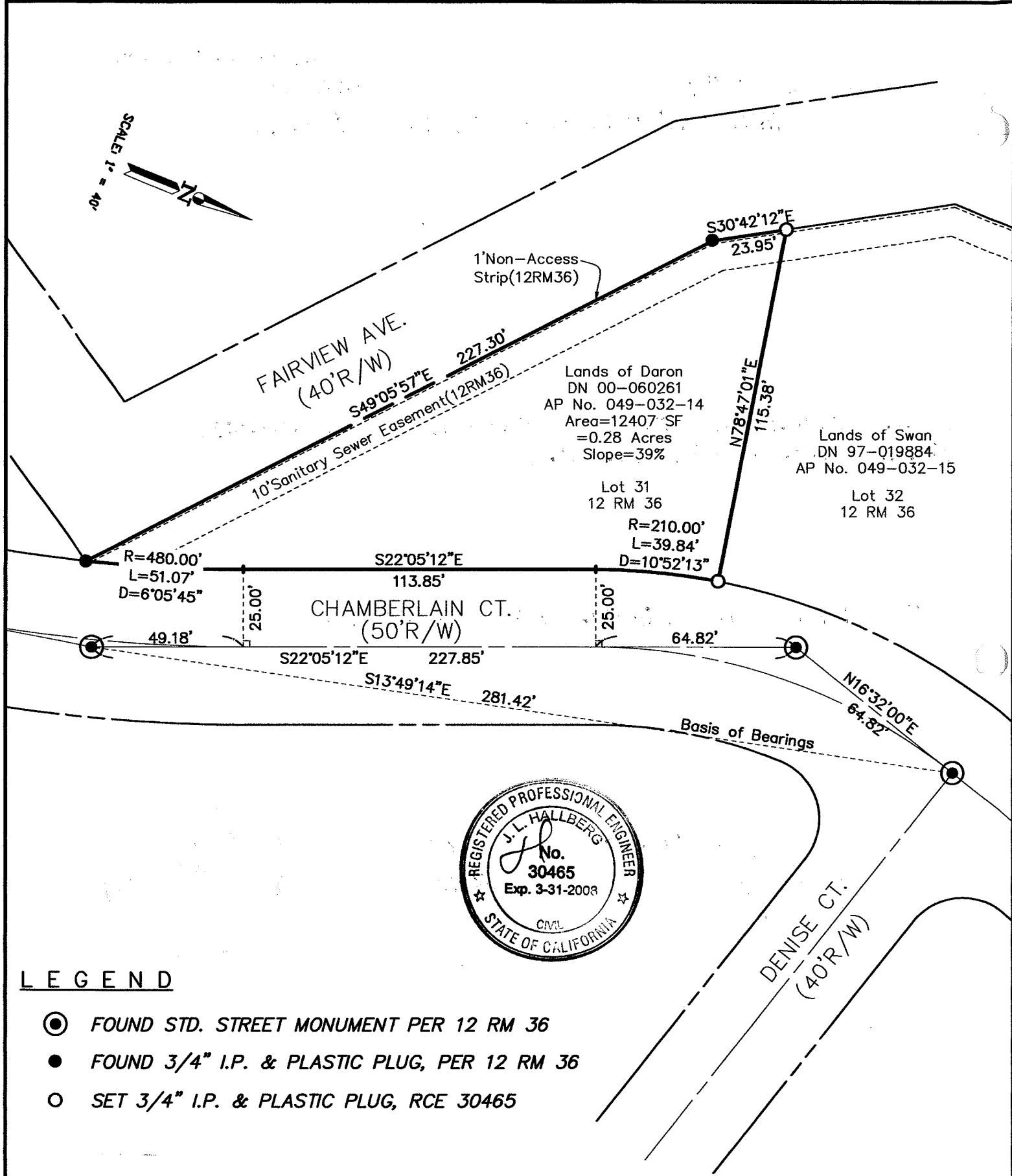
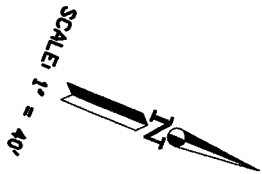
and examined and filed OCTOBER 21, 2005

Signed [Signature] P.L.S or R.C.E. No. 7128

Title COUNTY SURVEYOR



County Surveyor's Comment _____



Lands of Daron
 DN 00-060261
 AP No. 049-032-14
 Area=12407 SF
 =0.28 Acres
 Slope=39%

Lands of Swan
 DN 97-019884
 AP No. 049-032-15

Lot 31
 12 RM 36

Lot 32
 12 RM 36

R=210.00'
 L=39.84'
 D=10°52'13"



LEGEND

- ⊙ FOUND STD. STREET MONUMENT PER 12 RM 36
- FOUND 3/4" I.P. & PLASTIC PLUG, PER 12 RM 36
- SET 3/4" I.P. & PLASTIC PLUG, RCE 30465

Note: All distances are in feet and decimals thereof.

SHEET	1	OF	1
SCALE:	1" = 40'	DESIGN:	
DATE:	6-14-05	DRAWN:	SMC
FILE:	2005-085	CHECKED:	J.L.H

J.L. ENGINEERING
 CIVIL ENGINEERS—LAND SURVEYORS
 1539 4th ST., SAN RAFAEL, CA. 94901 (415) 457-6647

Corner Record
 Lands of Daron— 820 Chamberlain Ct.
 APN 049-032-14, Mill Valley, Marin County, CA