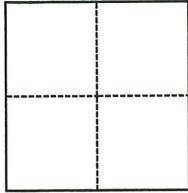


CORNER RECORD

Agency Index ADJ DW # 19-111
 Document Number ADJ 048-233-72 ADJ

City of MILL VALLEY County of MARIN, California
 Brief Legal Description STANDARD COUNTY MONUMENT SHOWN ON 20 RS 07.

CORNER TYPE



- Government Corner Control
 Meander Property
 Rancho Other

Date of Survey July 15, 2019

COORDINATES (Optional)

N. _____ E. _____
 Elevation _____
 Units Metric U.S. Survey Foot
 Horizontal Datum _____
 Zone _____ Epoch Date _____
 Vertical Datum _____
 Complies with Public Resources Code §§8801-8819
 Complies with Public Resources Code §§8890-8902

PLS Act Ref.: 8765(d) 8771 8773 Other:
 Corner/Monument: Left as found Established Rebuilt Pre-Construction
 Found and tagged Reestablished Referenced Post-Construction

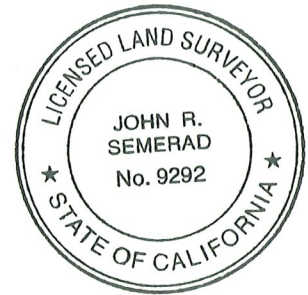
Narrative of corner identified and monument as found, set, reset, replaced, or removed:

See sheet #2 for description(s):

FOUND STANDARD COUNTY MONUMENT SHOWN ON 20 RS 07 NEAR LOT 4 AS SHOWN ON MAP 4 RM 82. SET FOUR REFERENCE TIES; RE-ESTABLISHED WITH COUNTY OF MARIN WELL MONUMENT PER UCS DWG #300. (SEE ATTACHED SKETCH) NO DETERMINATION WAS MADE AS TO THE VALIDITY OF THE MONUMENT SHOWN HERON OR ITS RELATION TO PROPERTY LINES IN THE AREA.

SURVEYOR'S STATEMENT

This Corner Record was prepared by me or under my direction in conformance with the Professional Land Surveyors' Act on 06/20/22
 Signed [Signature] P.L.S. or R.C.E. No. 9292



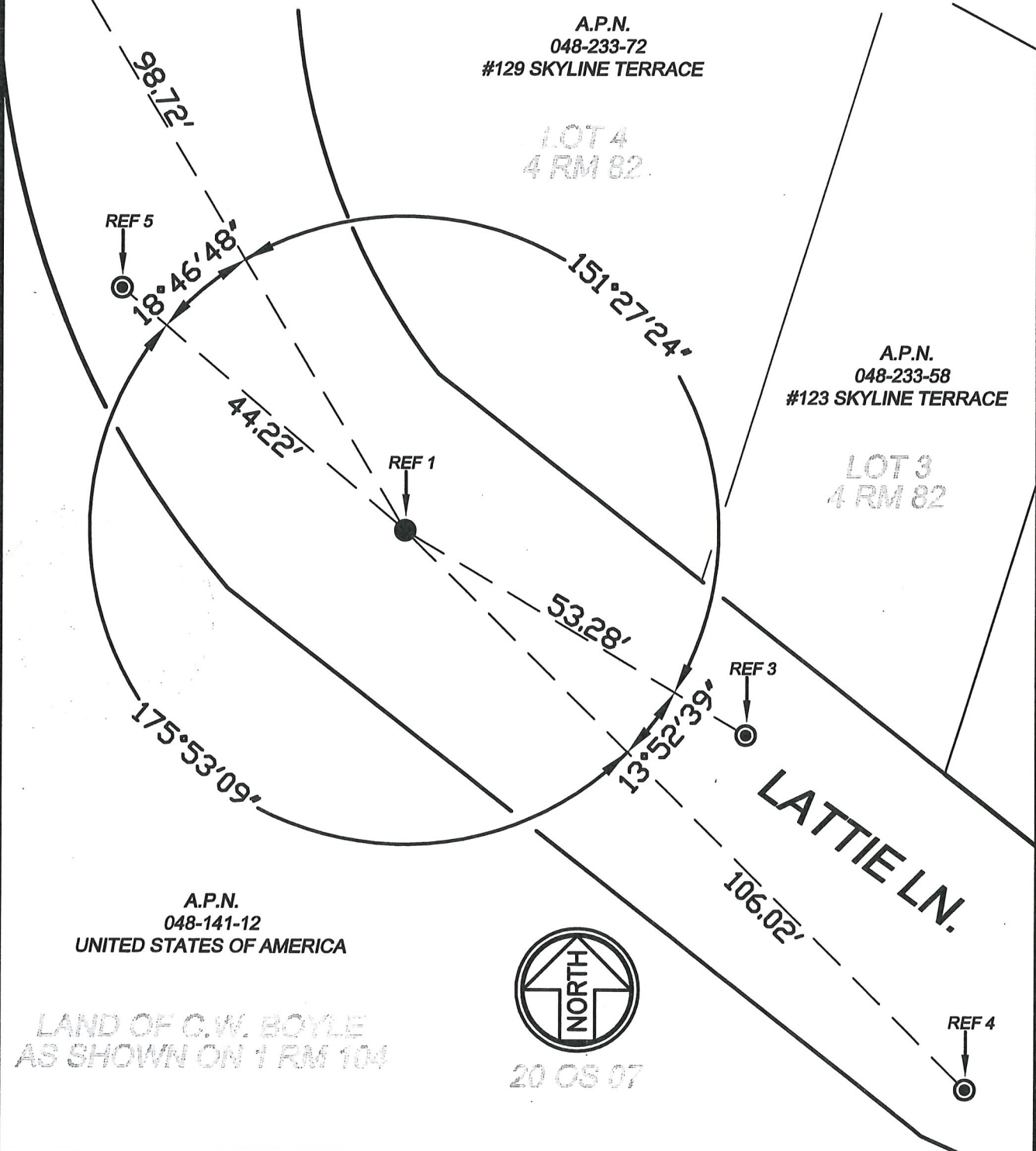
COUNTY SURVEYOR'S STATEMENT

This Corner Record was received 9/5/2019
 and examined and filed 6/20/22
 Signed T. K. Park P.L.S. or R.C.E. No. 8176
 Title County Surveyor



County Surveyor's Comment

- REF 1: FOUND 2" DISC IN STANDARD COUNTY MONUMENT WELL STAMPED "R.C.E. 8180" PER 20 RS 07 REPLACED WITH COUNTY STANDARD MONUMENT PER UNIFORM CONSTRUCTION STANDARDS DRAWING #300.
- REF 2: SET REBAR AND RED PLASTIC CAP STAMPED "MARIN PW " ON TOP OF BANK.
- REF 3: SET MAG NAIL AND WASHER STAMPED "MARIN COUNTY SURVEYOR " ON ASPHALT BERM.
- REF 4: SET REBAR AND RED PLASTIC CAP STAMPED "MARIN PW " ON TOP OF BANK.
- REF 5: SET REBAR AND RED PLASTIC CAP STAMPED "MARIN PW " ON TOP OF BANK.



COUNTY OF MARIN
 DEPARTMENT OF PUBLIC WORKS
 SURVEY SECTION

SCALE: 1" = 20'

CORNER RECORD

JOB No. 2019-28