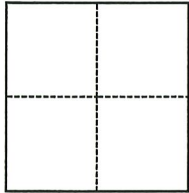


CORNER RECORD

Agency Index ADJ DW#19-093
 Document Number ADJ 048-233-57 ADJ

City of MILL VALLEY County of MARIN, California
 Brief Legal Description BLM DISC SHOWN ON DEPENDENT RESURVEY T.1N., R.6W., M.D.M.



CORNER TYPE

- Government Corner Control
 Meander Property
 Rancho Other

Date of Survey June 15, 2019

COORDINATES (Optional)

N. _____ E. _____
 Elevation _____
 Units Metric U.S. Survey Foot
 Horizontal Datum _____
 Zone _____ Epoch Date _____
 Vertical Datum _____
 Complies with Public Resources Code §§8801-8819
 Complies with Public Resources Code §§8890-8902

PLS Act Ref.: 8765(d) 8771 8773 Other:
 Corner/Monument: Left as found Established Rebuilt Pre-Construction
 Found and tagged Reestablished Referenced Post-Construction

Narrative of corner identified and monument as found, set, reset, replaced, or removed:
 See sheet #2 for description(s):

FOUND 3" BLM BRASS DISC STAMPED POINT NUMBER 446 SHOWN ON DEPENDENT RESURVEY OF THE G.G.N.R.A. 1985 T.1N., R.6W., M.D.M. NEAR LOT 2 AS SHOWN ON MAP 4 RM 82. SET FOUR REFERENCE TIES; RE-ESTABLISHED WITH COUNTY WELL MONUMENT PER UCS DWG #300. (SEE ATTACHED SKETCH) NO DETERMINATION WAS MADE AS TO THE VALIDITY OF THE MONUMENT SHOWN HERON OR ITS RELATION TO PROPERTY LINES IN THE AREA.

SURVEYOR'S STATEMENT

This Corner Record was prepared by me or under my direction in conformance with the Professional Land Surveyors' Act on 06/20/22
 Signed [Signature] P.L.S. or R.C.E. No. 9292



COUNTY SURVEYOR'S STATEMENT

This Corner Record was received AUGUST 7, 2019
 and examined and filed 6/20/2022
 Signed [Signature] P.L.S. or R.C.E. No. 8176
 Title County Surveyor

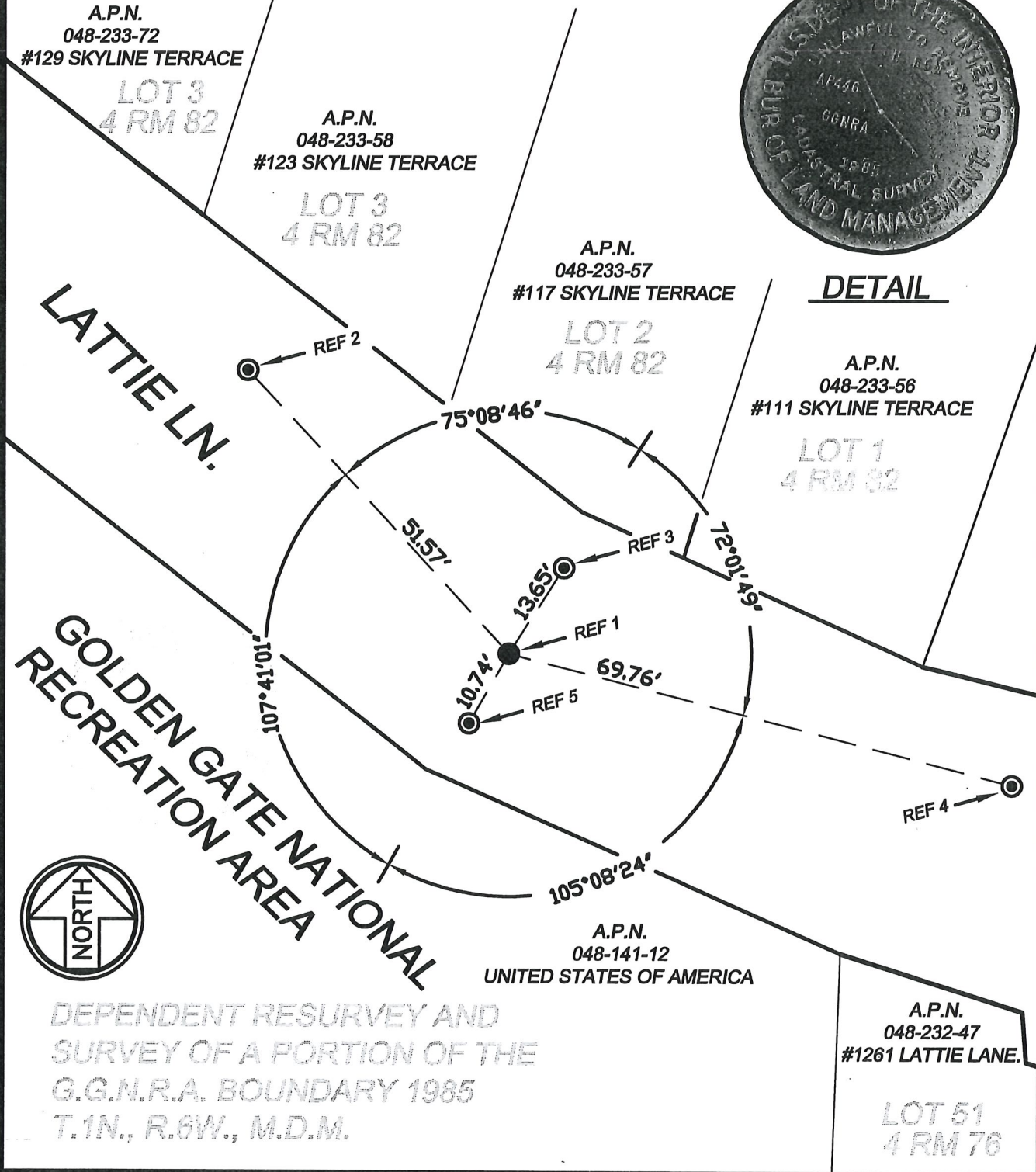


County Surveyor's Comment

- REF 1: FOUND 3" B.L.M. DISC, POINT NUMBER 446 PER THE DEPENDENT RESURVEY AND SURVEY OF A PORTION OF THE G.G.N.R.A. BOUNDARY 1985 T.1N., R. 6 W., M.D.M. SET WITHIN ASPHALT ROAD (SEE DETAIL) REPLACED WITH COUNTY STANDARD MONUMENT PER UNIFORM CONSTRUCTION STANDARDS DRAWING #300.
- REF 2: SET MAG NAIL AND WASHER STAMPED "MARIN COUNTY SURVEYOR " ON ASPHALT BERM.
- REF 3: SET HUB WITH MAG NAIL AND WASHER STAMPED "MARIN COUNTY SURVEYOR " ON SIDE OF ROAD BANK.
- REF 4: SET MAG NAIL AND WASHER STAMPED "MARIN COUNTY SURVEYOR " ON ASPHALT BERM.
- REF 5: SET REBAR AND RED PLASTIC CAP STAMPED "MARIN CO. DPW " ON TOP OF BANK.



DETAIL



DEPENDENT RESURVEY AND SURVEY OF A PORTION OF THE G.G.N.R.A. BOUNDARY 1985 T.1N., R.6W., M.D.M.

COUNTY OF MARIN
DEPARTMENT OF PUBLIC WORKS
SURVEY SECTION

SCALE: 1"=20'

CORNER RECORD

JOB No. 2019-28