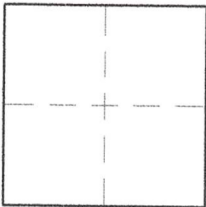


CORNER RECORD

Agency Index 21-004
Document Number 048-232-68
County of MARIN, California

City of UNINCORPORATED

Brief Legal Description LOTS 42 & 43, BLOCK 1, 4 MAPS 76



CORNER TYPE

Government Corner Control
Meander Property
Rancho Other

Date of Survey 7/31/2020

COORDINATES (Optional)

N. _____ E. _____
Elevation _____
Units Metric U.S. Survey Foot
Horizontal Datum _____
Zone _____ Epoch Date _____
Vertical Datum _____

Complies with Public Resources Code §§8801-8819
 Complies with Public Resources Code §§8890-8902

PLS Act Ref: 8765(d) 8771 8773 Other:

Corner / Monument: Left as found Established Rebuilt Pre-Construction
 Found and tagged Reestablished Referenced Post-Construction

Narrative of corner identified and monument as found, set, reset, replaced, or removed:

See sheet #2 for description (s):

SURVEYOR'S STATEMENT

This Corner Record was prepared by me or under my direction in conformance with the Professional Land Surveyors' Act on 11/24/20

Signed [Signature] P.L.S. or R.C.E. No. 8475



COUNTY SURVEYOR'S STATEMENT

This Corner Record was received 12-8-20

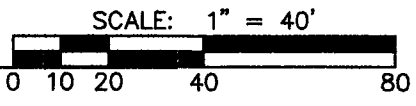
and examined and filed 5-12-21

Signed [Signature] P.L.S. or R.C.E. No. 9292

Title DEPUTY

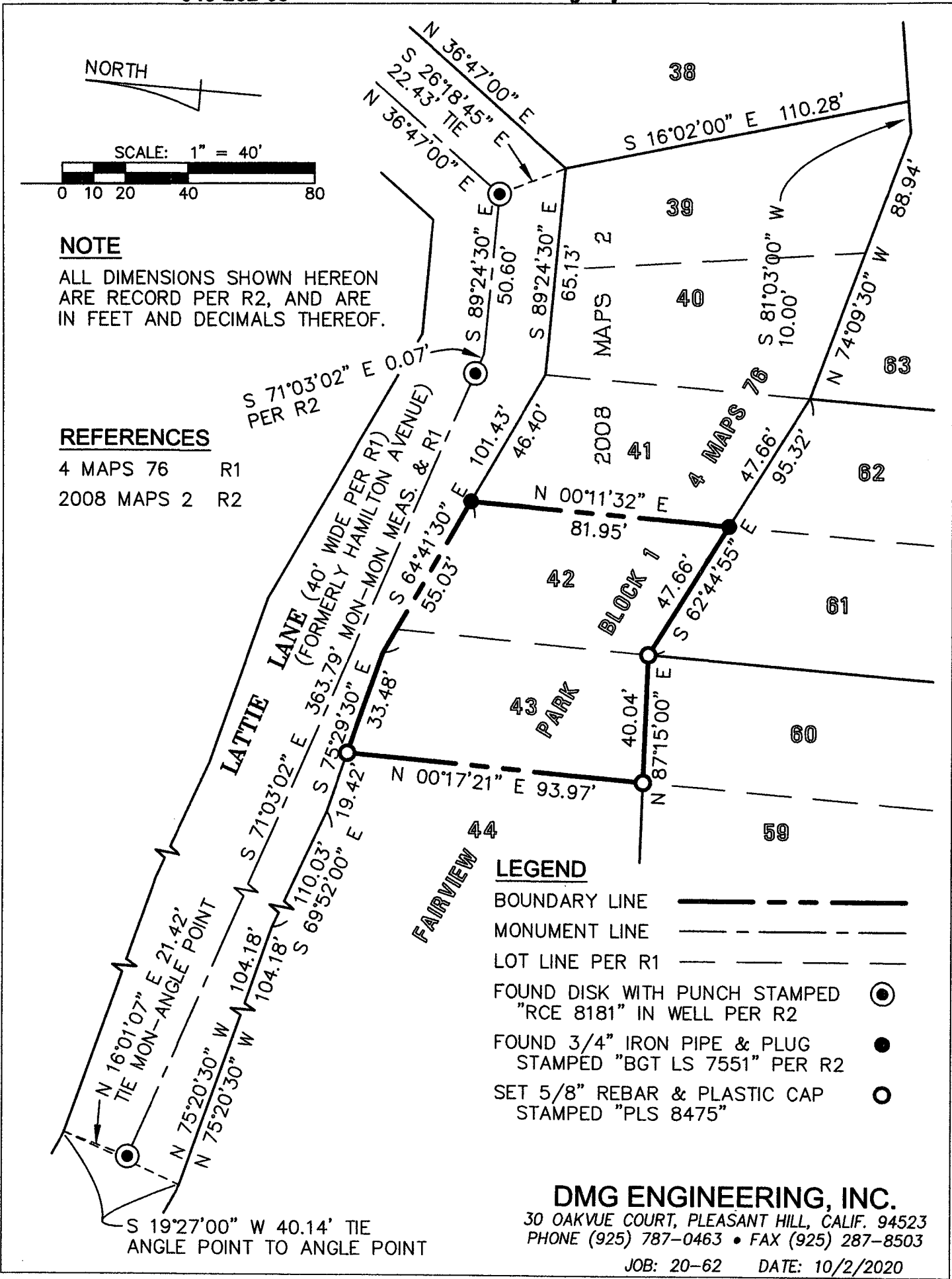


County Surveyor's Comment _____



NOTE
 ALL DIMENSIONS SHOWN HEREON
 ARE RECORD PER R2, AND ARE
 IN FEET AND DECIMALS THEREOF.

REFERENCES
 4 MAPS 76 R1
 2008 MAPS 2 R2



- LEGEND**
- BOUNDARY LINE
 - MONUMENT LINE
 - LOT LINE PER R1
 - FOUND DISK WITH PUNCH STAMPED "RCE 8181" IN WELL PER R2 ●
 - FOUND 3/4" IRON PIPE & PLUG STAMPED "BGT LS 7551" PER R2 ●
 - SET 5/8" REBAR & PLASTIC CAP STAMPED "PLS 8475" ○

DMG ENGINEERING, INC.
 30 OAKVUE COURT, PLEASANT HILL, CALIF. 94523
 PHONE (925) 787-0463 • FAX (925) 287-8503
 JOB: 20-62 DATE: 10/2/2020